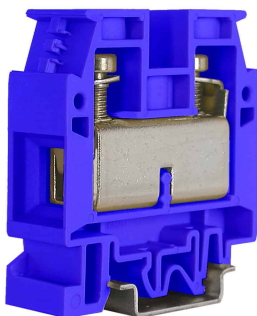
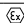
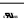




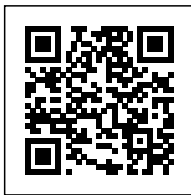


Screw terminal block 50mm²,
1-level, blue color, CBD series



Series	CBD
Code	CBX72
Type	CBD.50 (Ex)i
HS code	85369010
Colour	blue
TECHNICAL FEATURES	
Function/Type	Feed-through
Rated cross-section	50 mm ²
Connecting capacity	
Flexible wire	1.5-50 mm ²
Rigid wire	1-70 mm ²
Wire with ferrule - ferrule type	50 mm ² – WP500/40
Electrical characteristics according to IEC EN standard	
Maximum voltage AC/DC	1000 V
Maximum current (rated cross-section)	150 A
Caliber	B9
Electrical characteristics according to UL Standard	
Maximum voltage AC/DC	600 V
Maximum current (rated cross-section)	130 A
Section (min-max)	16-1 (AWG)
Tightening torque value (UL)	3.75 lb.in
Electrical characteristics according to ATEX directive and IEC Ex standard	
Maximum voltage AC/DC	630 / 630 V
Maximum current (rated cross-section)	150 A
Operating temperature Min/Max	-40 °C / +110 °C
Rated impulse withstand voltage / pollution degree	12 kV / 3
Insulation stripping length	22 mm
Tightening torque value (nom. / max.)	2.5 / 5 Nm
Width (pitch)	18 mm
Length	57 mm
Height mounted on TH35-7.5/TH35-15/G32	62 / 70 / 66 mm
Insulation material temperature index (EN 60216-1)	130 °C
Plastic material	Polyamide UL94V-0
ACCESSORIES	
End section	
Grey	CB50/PT/GR (cod. CB711GR)
Blue	CB50/PT (Ex)i (cod. CBX73)
Beige	CB50/PT (cod. CB711)
Thickness	1.5 mm
Cross-connection	
Model A)	POF/07 (cod. POF07) – PFX/07 (cod. PFX07)
Model B)	–
Rated current carrying capacity IEC/ATEX	150 A / 150 A
Switchable cross-connection	POS/77 (cod. POS77)
Multiple cross-connection bar	PMP/07/14 (cod. PMP07) 14 poles
Shunting screw and sleeve (Standard / Exe)	CPM/07 (cod. CPM07) – CPX/07 (cod. CPX07)
Protection cover	PRP/8 (cod. PRP08)
Coloured partition plate	DFU/5/R (cod. DU05R)
Cross-connection barrier	DFM/700 (cod. DF700)
Test plug socket	SDD/2 (cod. DD002) – PSD/C (cod. PD003)
Modular test plug	–
End section for modular test plug	–
Shielding bar	–
Marking	
Single marking tag	CNU/8/51 (cod. NU0851S) – CNU/10/61 (cod. NU1061S)
Single marking tag for pitch insertion	–
Warning plate	TUM/07 on 3 and on 4 TUM07
End bracket	
TH35 screw type	BT/3 (cod. BT003)
TH35 snap-fit type	BTO (cod. BT007)
TH35 and G32 snap-fit type	BTU (cod. BT005)
Mounting rail	
IEC 60715/TH35	PR/3/...
IEC 60715/G32	PR/DIN/...
APPROVALS AND MARKINGS	
     	



DESCRIZIONE DEL PRODOTTO

CBD.50(Ex)
Screw terminal block 50mm2, 1-level, blue color, CBD series