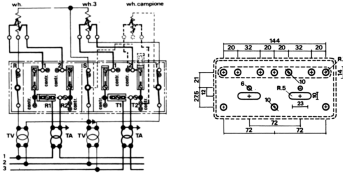
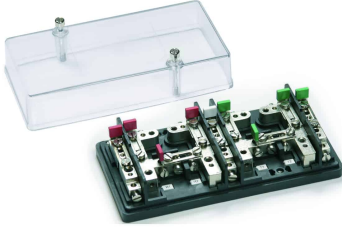
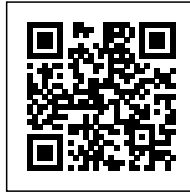


2-phase control terminal board,
yellow color, rear-entry connection



Series	MCM
Code	MC202G
Type	MCM.2/G
HS code	85369010
Colour	Yellow
TECHNICAL FEATURES	
Function/Type	Sectioning and measurement
Rated cross-section	6 mm ²
Rated cross-section	
Connecting capacity	
Flexible wire	0.5-6 mm ²
Rigid wire	0.5-6 mm ²
Electrical characteristics according to IEC EN standard	
Maximum voltage AC/DC	500 V
Maximum current (rated cross-section)	57 A
Protection degree	IP20
Rated impulse withstand voltage / pollution degree	6 kV / 3
Insulation stripping length	-
Tightening torque value (nom. / max.)	1.2 Nm
Dimension	85x170x48 mm (AxBxH)
Plastic material	Kelon UL94V-0
ACCESSORIES	
Protection cover	MCM.2/CO (cod. MC002) (1)
APPROVALS AND MARKINGS	



* For meters with ARON insertion* Cable entry from the rear side with 4,1 mm hole* Transparent front cover
1 (1) The cover is already included in the terminal board, this article is to be considered as a spare in case of need

DESCRIZIONE DEL PRODOTTO

MCM.2/G 2-phase
control terminal board, yellow color, rear-entry connection