



# CorePro LED PLL

## CorePro LED PLL HF 12W 840 4P 2G11

Philips CorePro LED PLL is the ideal uplamping solution for downlights & luminaires in a wide range of general lighting applications. It integrates a LED light source into a traditional fluorescent form factor to offer superb energy savings over a lifetime that's twice as long as fluorescent alternatives.

### Product data

General Information	
Cap-Base	2G11 [2G11]
Nominal lifetime	30,000 hour(s)
Switching Cycle	50,000
Lighting Technology	LED
Flux measurement reference	Sphere
Light Technical	
Color Code	840 [CCT of 4000K]
Beam Angle (Nom)	160 degree(s)
Luminous Flux	1,500 lumen
Color Designation	Cool White (CW)
Correlated Color Temperature (Nom)	4000 K
Luminous Efficacy (rated) (Nom)	125 lm/W
Color Consistency	<6
Color rendering index (CRI)	80
LLMF At End Of Nominal Lifetime (Nom)	70 %
Operating and Electrical	
Line Frequency	20K-80K Hz
Input Frequency	20K-80K Hz
Power Consumption	12 W
Starting Time (Nom)	0.5 s

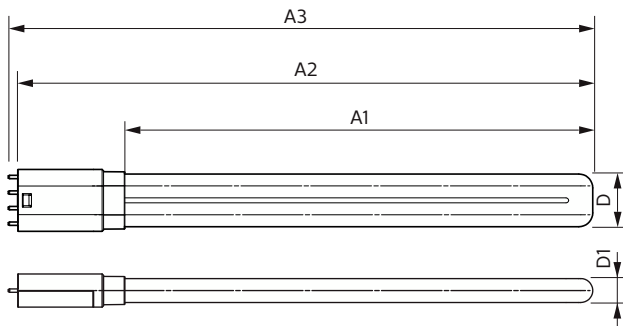
Warm-up time to 60% light	0.5 s
Power Factor (Fraction)	0.9
Voltage (Nom)	20-60 V
Temperature	
Ambient temperature range	-20 °C to 45 °C
T-Case Maximum (Nom)	70 °C
Controls and Dimming	
Dimmable	No
Mechanical and Housing	
Bulb Finish	Frosted
Bulb Material	Glass
Product Length	300 mm
Bulb Shape	Tube, single-ended
Approval and Application	
Energy Saving Product	Yes
Approval Marks	RoHS compliance TUV CE marking KEMA Keur certificate
Energy Consumption kWh/1000 h	12 kWh
EPREL Registration Number	1,370,822

# CorePro LED PLL

EU RoHS compliant	Yes
<b>Product Data</b>	
Full product code	871951448682900
Order product name	CorePro LED PLL HF 12W 840 4P 2G11
Order code	929003579102
Numerator - Quantity Per Pack	1

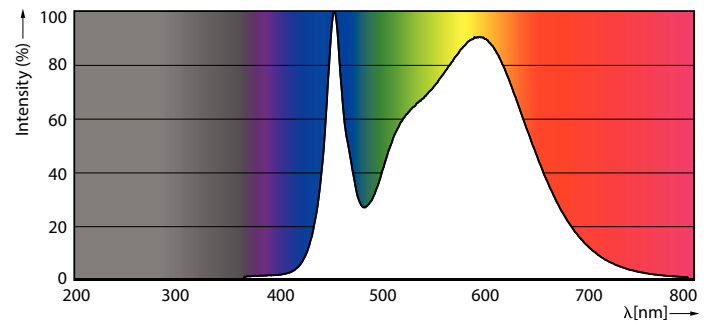
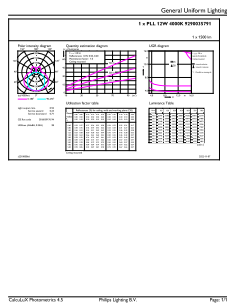
Numerator - Packs per outer box	10
Material number (12NC)	929003579102
Net weight	0.113 kg
Full product name	CorePro LED PLL HF 12W 840 4P 2G11
EAN/UPC - Case	8719514486836

## Dimensional drawing

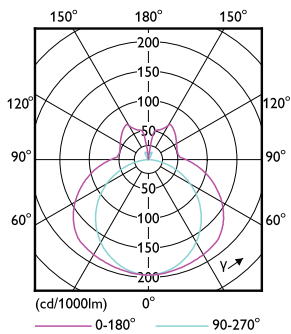


Product	D1	D2	A1	A2	A3
CorePro LED PLL HF 12W 840 4P 2G11	17 mm		250 mm	312 mm	319 mm

## Photometric data



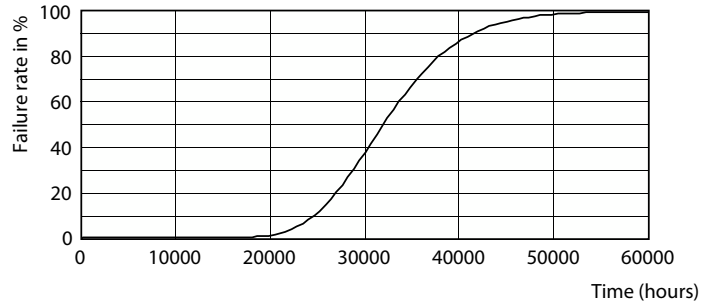
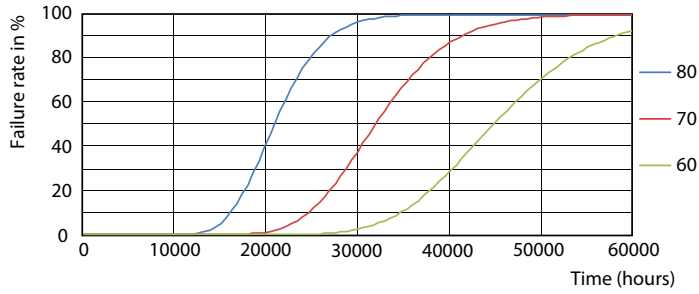
Spectral Power Distribution Colour



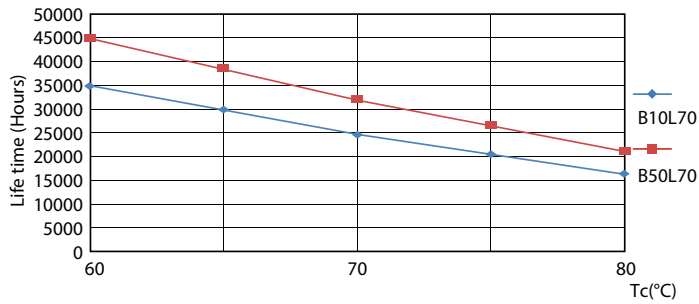
Light Distribution Diagram

# CorePro LED PLL

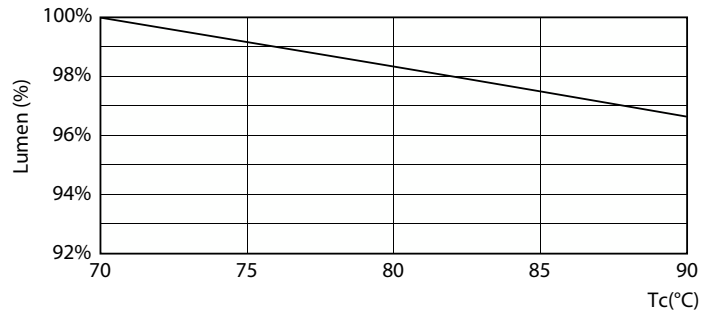
## Lifetime



Life Expectancy Diagram

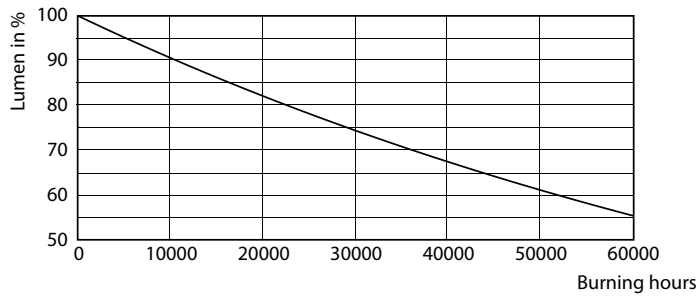


Life Expectancy Diagram - CorePro LED PLL HF 12W 840 4P 2G11



Life Expectancy Diagram

Lumen Maintenance Diagram



Lumen Maintenance Diagram - CorePro LED PLL HF 12W 840 4P 2G11

## CorePro LED PLL

