


44424012	DATA SHEET	
Valid from: 17.09.2018	EPIC® POWER MODULE MCS-HC 2 / MCB-HC 2	

Description

- The mixed assembly guarantees high flexibility. For applications in mechanical and plant engineering, for printing machines and slide-in technology.
- High current transfer
- Only one slot needed in the frame
- Crimp connection for permanent vibration proof contact



General Characteristics

Series	POWER Modul
Number of Contacts	2
Termination Methods	Crimp termination: 16.0 mm ²
Temperature Range	-40°C to +125°C

Artikel No.	Module	VPE
44424012	Male	10
44424013	Female	10

Mechanical Characteristics

Cycles of mechanical operation	500
--------------------------------	-----


Electrical Characteristics

Rated Voltage	1000 V
Rated impulse voltage	8 kV
Rated Current	65 A
Pollution Degree	3

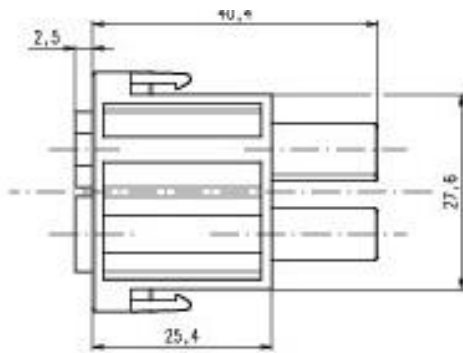
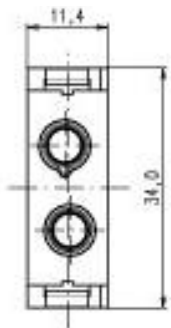
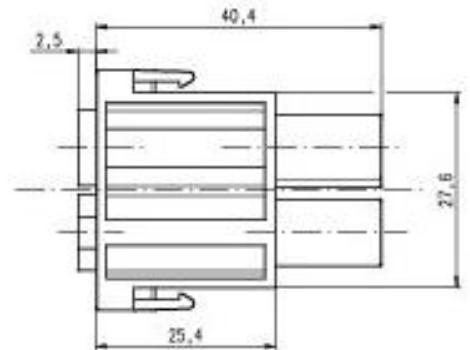
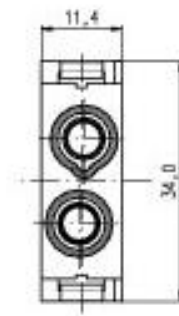
Materials and Surfaces

Module	PA6
Flammability Class according to UL 94	V0

Creator: MANA2/PDP Released: IVSE1/PDP	Document: DB44424012EN Version: 01	Page 1 of 2
-------------------------------------------	---------------------------------------	-------------

44424012	DATA SHEET	
Valid from: 17.09.2018	EPIC® POWER MODULE MCS-HC 2 / MCB-HC 2	

Technical Drawing



Automation



Industrial machinery and plant engineering



Wind Energy

Info

High power module 2pole with screw connection

Application range

Plant engineering
Robotics industry
Control engineering
Mechanical engineering

Remark

PE connection with a 16mm² wire only with the recommended ring lug 44424029
The inserts must be used with the appropriate housings
Photographs are not to scale and do not represent detailed images of the respective products

Creator: MANA2/PDP Released: IVSE1/PDP	Document: DB44424012EN Version: 01	Page 2 of 2
-------------------------------------------	---------------------------------------	-------------