



MASTER LEDtube InstantFit HF T5

MAS LEDtube HF 600mm HE 8W 865 T5

The Philips MASTER LEDtube integrates a LED light source into a traditional fluorescent form factor. Its unique design creates a perfectly uniform visual appearance, which cannot be distinguished from traditional fluorescent. These T5 lighting tubes are the right choice for absolute performance and are designed to stand up to everyday conditions. Unparalleled savings thanks to low energy consumption and an exceptionally long lifetime make these T5 LED tubes the choice for every demanding application.

Product data

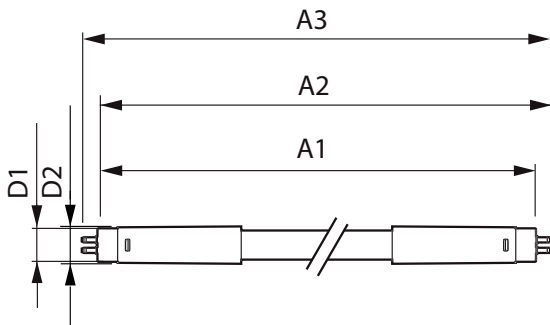
General Information		Operating and Electrical	
Cap-Base	G5 [G5]	Line Frequency	30K to 100K Hz
Nominal lifetime	60,000 hour(s)	Input Frequency	30K to 100K Hz
Switching Cycle	50,000	Power Consumption	8 W
Lighting Technology	LED	Starting Time (Nom)	0.5 s
Flux measurement reference	Sphere	Warm-up time to 60% light	0.5 s
		Power Factor (Fraction)	0.92
		Voltage (Nom)	40-70 V
Light Technical		Temperature	
Color Code	865 [CCT of 6500K]	Ambient temperature range	-20 °C to 45 °C
Beam Angle (Nom)	200 degree(s)	T-Case Maximum (Nom)	65 °C
Luminous Flux	1,050 lumen		
Color Designation	Cool Daylight	Controls and Dimming	
Correlated Color Temperature (Nom)	6500 K	Dimmable	Yes - Check ballast compatibility
Luminous Efficacy (rated) (Nom)	131 lm/W		
Color Consistency	<6	Mechanical and Housing	
Color rendering index (CRI)	80	Bulb Finish	Frosted
LLMF At End Of Nominal Lifetime (Nom)	70 %		

MASTER LEDtube InstantFit HF T5

Bulb Material	Glass
Product Length	600 mm
Bulb Shape	Tube, double-ended
Approval and Application	
Energy Saving Product	Yes
Approval Marks	RoHS compliance TUV CE marking KEMA Keur certificate
Energy Consumption kWh/1000 h	8 kWh
EPREL Registration Number	1,384,133
CE mark	Yes
EU RoHS compliant	Yes

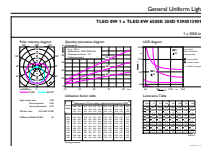
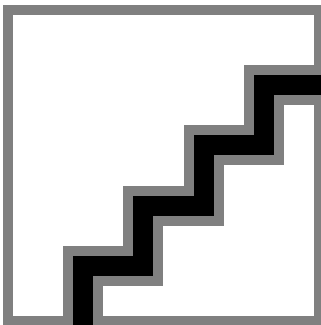
Product Data	
Full product code	871869674327000
Order product name	MAS LEDtube HF 600mm HE 8W 865 T5
Order code	929001390902
Numerator - Quantity Per Pack	1
Numerator - Packs per outer box	10
Material number (12NC)	929001390902
Full product name	MAS LEDtube HF 600mm HE 8W 865 T5
EAN/UPC - Case	8718696743287

Dimensional drawing



Product	D1	D2	A1	A2	A3
MAS LEDtube HF 600mm HE 8W 865 T5	15.5 mm	18.8 mm	549 mm	556.1 mm	563.2 mm

Photometric data

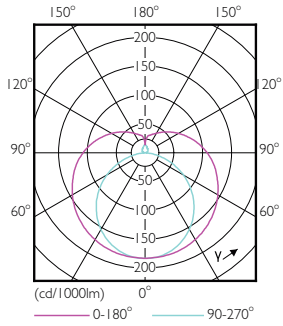


General Uniform Lighting
FLUO 0W 1 - FLUO 0W 865 8W 865 T5
Page 11

Spectral Power Distribution Colour - MAS LEDtube HF 600mm HE 8W 865 T5

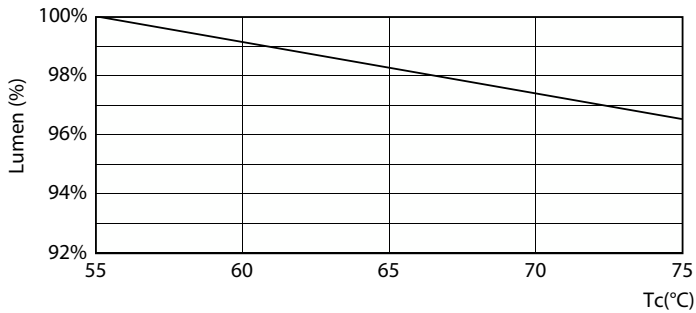
MASTER LEDtube InstantFit HF T5

Photometric data

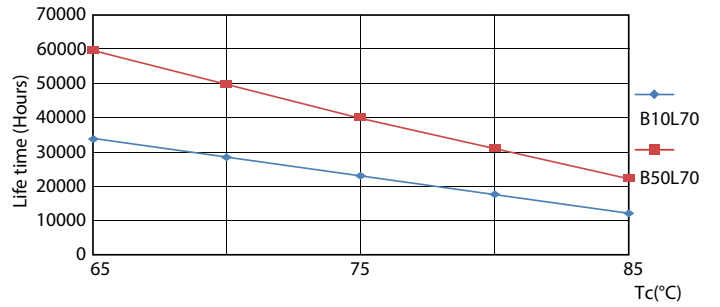


Light Distribution Diagram - MAS LEDtube HF 600mm HE 8W 865 T5

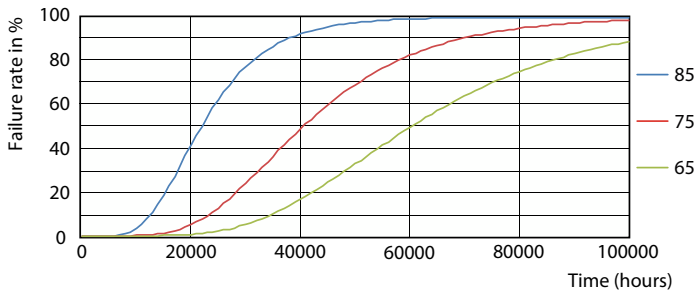
Lifetime



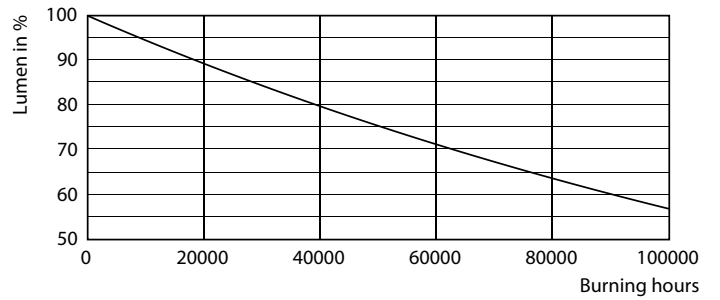
Lumen Maintenance Diagram - MAS LEDtube HF 600mm HE 8W 865 T5



Life Expectancy Diagram - MAS LEDtube HF 600mm HE 8W 865 T5



Life Expectancy Diagram - MAS LEDtube HF 600mm HE 8W 865 T5



Lumen Maintenance Diagram - MAS LEDtube HF 600mm HE 8W 865 T5

MASTER LEDtube InstantFit HF T5

Lifetime



Life Expectancy Diagram - MAS LEDtube HF 600mm HE 8W 865 T5

