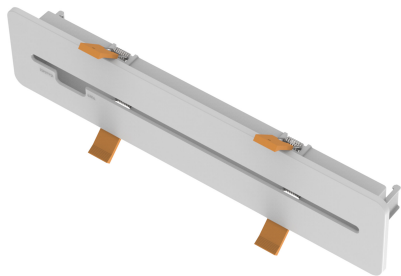


PRODUCT DATASHEET

EM EXIT RECESSED KIT

EMERGENCY EXIT SIGN ACCESSORIES | EMERGENCY EXIT SIGN mounting accessories for flag, recessed and suspended installation



Areas of application

- Emergency illumination of escape routes
- Offices, education, public buildings
- Industry

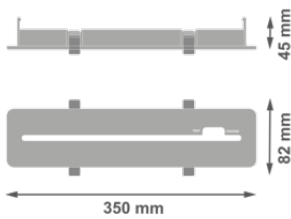
Product benefits

- Easy installation

TECHNICAL DATA

Dimensions & Weight

Length	350.00 mm
Width	82.00 mm
Height	45.00 mm
Product weight	130.00 g



EM EXIT RECESSED KIT

Materials & Colors

Product color	White
Housing color	White
Body material	Polycarbonate (PC)

Application & Mounting

Mounting type	Recessed
Mounting location	Ceiling
With light source	No

Emergency lighting

Area of emergency application	Emergency exit signage
-------------------------------	------------------------


Certificates & Standards

Standards	CE / CB / UKCA / EAC
Luminaire with limited surface temperature, "D sign"	No

Additional product data

Product remark	Available from March 2025
----------------	---------------------------

DOWNLOAD DATA

Documents and certificates	Document name
 User instruction / safety instructions	EM EXIT

LOGISTICAL DATA

Product code	Packaging unit (Pieces/Unit)	Dimensions (length x width x height)	Gross weight	Volume
4099854232121	Folding box 1	107 mm x 55 mm x 357 mm	188.00 g	2.10 dm ³
4099854232138	Shipping box 50	580 mm x 370 mm x 560 mm	10150.00 g	120.18 dm ³

The mentioned product code describes the smallest quantity unit which can be ordered. One shipping unit can contain one or more single products. When placing an order, for the quantity please enter single or multiples of a shipping unit.

DISCLAIMER

Subject to change without notice. Errors and omission excepted. Always make sure to use the most recent release.