

TECHNISCHE DATEN:

Aufbau

Hutmutter	Messing CuZn39Pb3, galv. vernickelt
Dichteinsatz	Polychloropren-Nitrilkautschuk CR/NBR
Druckring	Messing, galv. vernickelt
Zwischenstutzen	Messing CuZn39Pb3, galv. vernickelt
O-Ring	Nitrilkautschuk NBR
Anschlussgewinde	Rohrgewinde, nach DIN ISO 228

Eigenschaften

- großer Dichtbereich
- montagefreundlich

Temperaturbereich	-30 °C / +100 °C
Schutzart	IP65

TECHNICAL DATA:

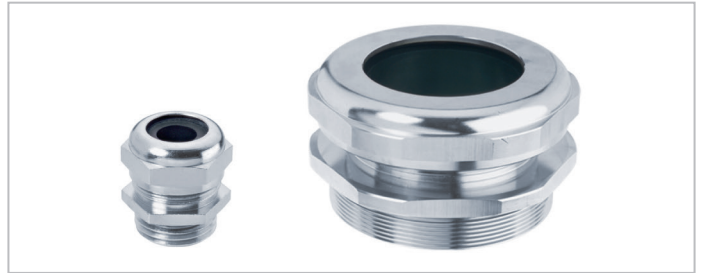
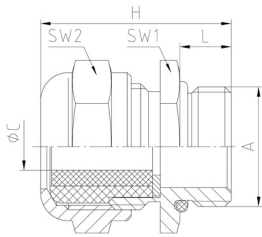
Configuration

Dome nut	Brass CuZn39Pb3, nickel-plated
Sealing insert	Polychloroprene-Nitrile rubber CR/NBR
Washer	Brass, nickel-plated
Gland body	Brass CuZn39Pb3, nickel-plated
O-ring	Nitrile rubber NBR
Connecting thread	Pipe thread as per DIN ISO 228

Properties

- wide sealing range
- easy-to-install

Temperature range	-30 °C / +100 °C
Protection grade	IP65




Merkmale

Characteristics

Anschlussgewinde Standardlänge

Connecting thread standard length

A	øC mm	$\frac{H}{L}$ mm	SW1 mm	SW2 mm	H mm		Art.-Nr. / Part No.
G 1/2"	8 - 15	8	24	24	29,5	50	101611
G 1"	18 - 25,5	11	40	40	36	25	102913
G 2"	40 - 49	11	64	64	46	5	101060
G 2 1/2"	48 - 55*	18	90	90	60,5	1	101085
G 2 1/2"	53 - 60*	18	90	90	60,5	1	101086
G 3"	58 - 64*	18	100	100	60,5	1	101087
G 3"	63 - 69*	18	100	100	60,5	1	101088
G 4"	68 - 75*	22	125	125	75	1	101089

* Dichteinsatz einteilig

* one-piece sealing insert