

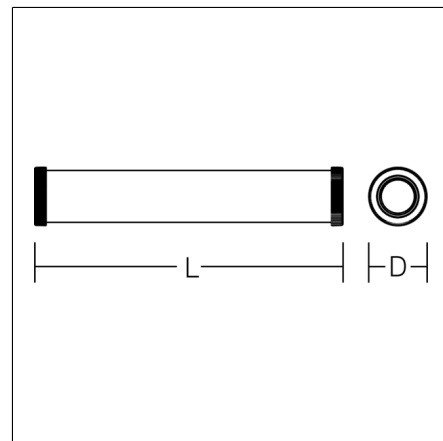
PLANOX TUBE

601072.002.1 | Surface-mounted damp-proof luminaires



Tube luminaires
4051859759256
D 78, L 1564

Ceiling mounting, pendant, Wall (surface)
white



Robust protective tube luminaire for tough requirements. Rack made of sheet steel, white powder coated. End caps made of plastic (polyamide) grey. Diffuser made of plastic (polycarbonate), opal, shockproof. Symmetrical light distribution. Homogeneous light distribution. With accessories for wall, ceiling or pendant mounting. Driver integrated. Easy installation with the Plug & Play Wieland RST® CLASSIC plug-in system. Luminaire with integrated through-wiring for series connection of further luminaires by two Wieland RST® Classic plug connectors (plug and socket). Accessories for electrical connection must be ordered separately. Mounting set must be ordered separately. Luminaires with limited surface temperature in accordance with EN 60598-2-24 for use in environments in which a deposit of conductive dust on the luminaire can be expected. Qualified for use in the food and drink industry. Suitable for lighting in public car parks and public off-street parking spaces according to DIN 67528. Environmentally friendly and resource-saving due to replaceable components.

Product specifications

| | |
|--|--------------------------------|
| Length L | 1564 mm |
| Diameter D | 78 mm |
| Weight | 3.33 kg |
| Light source | LED |
| Colour temperature | 4000 K |
| Rated luminous flux | 8650 lm |
| System power | 62 W |
| System efficiency | 140 lm/W |
| Glare evaluation UGR (4H 8H) | 25,6 |
| Beam angle | down 132°/105° up 180°/98° |
| Rated life | 72000 h (L80/B50) |
| Colour rendering index (CRI) | 83 |
| Colour tolerance | 3 |
| Photobiological safety according to EN 62471 | Risk group 1 |
| Driver | Converter |
| Control | on/off |
| Voltage | 220 - 240 V / 0 Hz, 50 - 60 Hz |
| Luminaires on B10A fuse | 12 |
| Luminaires on B16A fuse | 20 |
| Luminaires on C10A fuse | 20 |
| Luminaires on C16A fuse | 34 |
| Inrush current / Inrush current duration | 25 A / 230 µs |
| CIE Flux Code / CEN Flux Code | 42 71 90 91 100 |
| Type of protection | IP 67 |
| Protection class | I |
| Filament test | 750°C - 30 seconds |
| Impact resistance | IK08 |
| Ambient temperature | -20 °C ... + 30 °C |
| Safety marks | D-mark |
| Conformity mark | CE, EAC |

PLANOX TUBE

601072.002.1 | Surface-mounted damp-proof luminaires



Accessories



982117.009
Retaining clips for wall or ceiling installation



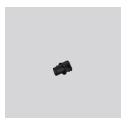
982118.000
Mounting brackets with hanger assembly made of stainless steel (set 2 pieces)



982764.006
Connector, 3 pole, with plug and socket



982765.006
Socket for feed-in



982766.003
End cap RST20i3