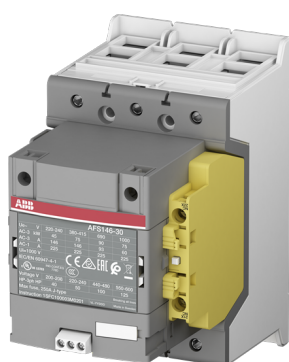


PRODUCT-DETAILS

AFS146-30-12-33

AFS146-30-12-33



General Information

Extended Product Type	AFS146-30-12-33
Product ID	1SFL467081R3312
EAN	7320500540589
Catalog Description	AFS146-30-12-33

Long Description	<p>The AFS146-30-12-33 is a 3 pole - 1000 V IEC or 600 V UL contactor with pre-mounted 1 left (1 N.O + 1 N.C.) and fixed 1 right (1 N.C.) side mounted auxiliary contact blocks with double clamp connections, controlling motors up to 75 kW / 400 V AC (AC-3) or 100 hp / 480 V UL and switching power circuits up to 225 A (AC-1) or 200 A UL general use. AFS contactors can be easily integrated in machine manufacturer's systems complying with main standards EN ISO 13849 and EN 62061 - guaranteeing the safe use of your machinery and equipment. An easily identifiable yellow low energy auxiliary contact block ensures the status feedback circuits required in machine safety applications. Thanks to the AF technology, the contactor has a wide control voltage range (100-250 V 50/60 Hz and DC), managing large control voltage variations, reducing panel energy consumptions and ensuring distinct operations in unstable networks. Furthermore, surge protection is built-in, offering a compact solution. AF contactors have a block type design, can be easily extended with add-on auxiliary contact blocks and an additional wide range of accessories.</p>
------------------	--

Ordering

Minimum Order Quantity	1 piece
Customs Tariff Number	85364900

Popular Downloads

Instructions and Manuals	1SFC100003M0201
CAD Dimensional Drawing	2CDC001079B0201

Dimensions

Product Net Width	90 mm
Product Net Depth / Length	126 mm
Product Net Height	150 mm
Product Net Weight	1.3 kg

Technical

Number of Main Contacts NO	3
Number of Main Contacts NC	0
Number of Auxiliary Contacts NO	1
Number of Auxiliary Contacts NC	2
Rated Operational Voltage	Main Circuit 1000 V
Rated Frequency (f)	Main Circuit 50 / 60 Hz
Conventional Free-air Thermal Current (I_{th})	acc. to IEC 60947-4-1, Open Contactors $\Theta = 40\text{ °C}$ 225 A
Rated Operational Current AC-1 (I_e)	(1000 V) 40 °C 225 A (1000 V) 60 °C 200 A (1000 V) 70 °C 175 A (690 V) 40 °C 225 A (690 V) 60 °C 200 A (690 V) 70 °C 175 A
Rated Operational Current AC-3 (I_e)	(415 V) 60 °C 146 A (440 V) 60 °C 146 A (500 V) 60 °C 130 A (690 V) 60 °C 93 A (1000 V) 60 °C 60 A (380 / 400 V) 60 °C 146 A (220 / 230 / 240 V) 60 °C 146 A
Rated Operational Current AC-3e (I_e)	(415 V) 60 °C 146 A (440 V) 60 °C 146 A (500 V) 60 °C 130 A (690 V) 60 °C 93 A (1000 V) 60 °C 54 A (380 / 400 V) 60 °C 146 A (220 / 230 / 240 V) 60 °C 146 A
Rated Operational Power AC-3 (P_e)	(415 V) 75 kW (440 V) 90 kW (500 V) 90 kW (690 V) 90 kW (1000 V) 75 kW (380 / 400 V) 75 kW (220 / 230 / 240 V) 45 kW
Rated Operational Power	(415 V) 75 kW

AC-3e (P_e)	(440 V) 90 kW (500 V) 90 kW (690 V) 90 kW (1000 V) 75 kW (380 / 400 V) 75 kW (220 / 230 / 240 V) 45 kW
Rated Breaking Capacity AC-3	8 x Ie AC-3
Rated Breaking Capacity AC-3e	8.5 x Ie AC-3e
Rated Making Capacity AC-3	10 x Ie AC-3
Rated Making Capacity AC-3e	12 x Ie AC-3e
Short-Circuit Protective Devices	gG Type Fuses 315 A
Rated Short-time Withstand Current Low Voltage (I_{cw})	at 40 °C Ambient Temp, in Free Air, from a Cold State 10 s 1168 A at 40 °C Ambient Temp, in Free Air, from a Cold State 15 min 200 A at 40 °C Ambient Temp, in Free Air, from a Cold State 1 min 477 A at 40 °C Ambient Temp, in Free Air, from a Cold State 1 s 1460 A at 40 °C Ambient Temp, in Free Air, from a Cold State 30 s 674 A
Maximum Breaking Capacity	cos phi=0.45 (cos phi=0.35 for Ie > 100 A) at 440 V 3000 A cos phi=0.45 (cos phi=0.35 for Ie > 100 A) at 690 V 1500 A
Maximum Electrical Switching Frequency	(AC-1) 300 cycles per hour (AC-2 / AC-4) 150 cycles per hour (AC-3) 300 cycles per hour
Rated Insulation Voltage (U_i)	acc. to IEC 60947-4-1 and VDE 0110 (Gr. C) 1000 V acc. to UL/CSA 600 V
Rated Impulse Withstand Voltage (U_{imp})	Main Circuit 8 kV
Mechanical Durability	5 million
Maximum Mechanical Switching Frequency	300 cycles per hour
Coil Operating Limits	(acc. to IEC 60947-4-1) 0.85 x Uc Min. ... 1.1 x Uc Max. (at $\theta \leq 70$ °C)
Rated Control Circuit Voltage (U_c)	50 Hz 100 ... 250 V 60 Hz 100 ... 250 V DC Operation 100 ... 250 V
Coil Consumption	Holding at Max. Rated Control Circuit Voltage 50 Hz 6 V·A Holding at Max. Rated Control Circuit Voltage 60 Hz 6 V·A Holding at Max. Rated Control Circuit Voltage DC 4 W Pull-in at Max. Rated Control Circuit Voltage 50 Hz 130 V·A Pull-in at Max. Rated Control Circuit Voltage 60 Hz 130 V·A Pull-in at Max. Rated Control Circuit Voltage DC 135 W
Operate Time	Between Coil De-energization and NO Contact Opening 37 ... 47 ms Between Coil Energization and NO Contact Closing 25 ... 55 ms
Connecting Capacity Main Circuit	Flexible 1 x 10 ... 70 mm ² Rigid Cu-Cable 2 x 10 ... 95 mm ²
Connecting Capacity Auxiliary Circuit	Flexible with Ferrule 2x 0.75 ... 2.5 mm ² Flexible with Insulated Ferrule 2x 0.75 ... 2.5 mm ² Flexible 1x0.75 ... 2.5 mm ² Solid 2 x 1 ... 4 mm ² Stranded 2 x 1 ... 4 mm ²
Degree of Protection	acc. to IEC 60529, IEC 60947-1, EN 60529 Coil Terminals IP20 acc. to IEC 60529, IEC 60947-1, EN 60529 Main Terminals IP00
Terminal Type	Double Clamp

Technical UL/CSA

Maximum Operating Voltage UL/CSA	Main Circuit 600 V
General Use Rating UL/CSA	(600 V AC) 200 A
Horsepower Rating UL/CSA	(200 ... 208 V AC) Three Phase 40 hp (220 ... 240 V AC) Three Phase 50 hp (440 ... 480 V AC) Three Phase 100 hp (550 ... 600 V AC) Three Phase 125 hp

Environmental

Ambient Air Temperature	Close to Contactor Fitted with Thermal O/L Relay (0.85 ... 1.1 Uc) -25 ... 50 °C Close to Contactor without Thermal O/L Relay (0.85 ... 1.1 Uc) -40 ... 70 °C Close to Contactor for Storage -40 ... 70 °C
Maximum Operating Altitude Permissible	Without Derating 3000 m
RoHS Status	Following EU Directive 2011/65/EU and Amendment 2015/863 July 22, 2019

Circular Value

ABB EcoSolutions	Yes
Circular Design Principles Recyclability Rate	Design for Closing Resource Loops - Standard EN45555 - 87.8 %
End of Life Instructions	1SFC100112M0001
Group Waste to Landfill Target	Non-hazardous waste is sent to a landfill, where there is no alternative option available within 100km of a facility
Improved Resource Efficiency for Customers	Product Efficiency - Product requires less energy to operate compared to similar product on market or older products from the same line
Sustainable Material Content	Recycled Metal - 37 %

Eco Transparency

Environmental Product Declaration - EPD	1SFC100092D0201
---	-----------------

Certificates and Declarations

CB Certificate	SEMKO_SE-70479M1
CQC Certificate	CQC2013010304604055
Declaration of Conformity - CCC	2020980304001304
Declaration of Conformity - CE	2CMT2018-005695
Declaration of Conformity - UKCA	2CMT2020-006125
EAC Certificate	1SFC101360D1101
UL Certificate	20120925-E36588

Container Information

Package Level 1 Units	box 1 piece
Package Level 1 Width	207 mm
Package Level 1 Depth / Length	216 mm
Package Level 1 Height	150 mm
Package Level 1 Gross Weight	1.5 kg
Package Level 1 EAN	7320500540589

Classifications

Object Classification Code	Q
ETIM 4	EC000066 - Magnet contactor, AC-switching
ETIM 5	EC000066 - Magnet contactor, AC-switching
ETIM 6	EC000066 - Power contactor, AC switching
ETIM 7	EC000066 - Power contactor, AC switching
ETIM 8	EC000066 - Power contactor, AC switching
eClass	V11.0 : 27371003
UNSPSC	39121529
IDEA Granular Category Code (IGCC)	4755 >> Contactors
E-Number (Finland)	3709000

Categories

Low Voltage Products and Systems → Control Products → Contactors → Block Contactors

