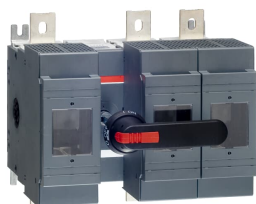


PRODUCT-DETAILS

OS630D12P

OS630D12P SWITCH FUSE



General Information

Extended Product Type	OS630D12P
Product ID	1SCA022825R3810
EAN	6417019283548
Catalog Description	OS630D12P SWITCH FUSE
Long Description	Switch Fuses,Front Operated,3-pole,12 (Between the Poles),DIN,3,Handle and shaft included,

Circular Value

Conflict Minerals Reporting Template (CMRT)	9AKK108467A5658
REACH Declaration	1SCC011021D0201
RoHS Information	1SCC011020D0201

Ordering

Minimum Order Quantity	1 piece
Customs Tariff Number	85365080
Country of Origin	Finland (FI)

Popular Downloads

Data Sheet, Technical Information	1SCC311013C0201
Instructions and Manuals	1SCC311016M0210

Dimensions

Product Net Width	341 mm
Product Net Height	306 mm
Product Net Depth / Length	233 mm
Product Net Weight	14.89 kg 32.83 lb

Technical

Rated Operational Current AC-21A (I_e)	(500 V) 630 A (690 V) 630 A
Rated Operational Current AC-22A (I_e)	(380 ... 415 V) 630 A (500 V) 630 A (690 V) 630 A
Rated Operational Current AC-23A (I_e)	(380 ... 415 V) 630 A (500 V) 630 A (690 V) 630 A
Rated Operational Power AC-23A (P_e)	(220 ... 240 V) 200 kW (400 V) 355 kW (415 V) 355 kW (500 V) 450 kW (690 V) 630 kW
Conventional Free-air Thermal Current (I_{th})	$\Theta = 40\text{ °C}$ 630 A
Conventional Thermal Current (I_{the})	Fully Enclosed 570 A
Rated Impulse Withstand Voltage (U_{imp})	12 kV
Rated Insulation Voltage (U_i)	1000 V
Rated Operational Voltage	Main Circuit 690 V AC
Rated Short-time Withstand Current Low Voltage (I_{cw})	for 1 s 18 kiloampere rms
Rated Conditional Short-Circuit Current (I_{nc})	(690 V) 80 kA
Power Loss	at Rated Operating Conditions per Pole 60 W
Pollution Degree	3
Handle Type	Pistol handle and shaft included
Switches Operating Mechanism	12 (Between the Poles)
Position of Line Terminals	Top In - Bottom Out, Bottom In - Top Out

Fuse Size	NH3
Fuse System	DIN
Operating Mode	Front Operated
Standards	IEC 60947-3
Mounting Type	Base mounting
Number of Poles	3
Terminal Type	Lug terminals
Terminal Width	39 mm
Tightening Torque	50 ... 75 N·m
Rated Current (I_n)	Main Circuit 630 A

Technical UL/CSA

Tightening Torque	50 ... 75 N·m
-------------------	---------------

Environmental

RoHS Status	Following EU Directive 2011/65/EU and Amendment 2015/863 July 22, 2019
-------------	--

Certificates and Declarations

CCC Certificate	CCC OS630-800 2016
Declaration of Conformity - CE	1SCC311112D2704
DNV GL Certificate	1SCC311131D0202
EAC Certificate	EAC OT_OTDC_OTL_OTP_OTR_OTU_OTE_OETL_OESA_OESC_OTM_OS_OSM_ .pdf
REACH Declaration	1SCC011021D0201

Container Information

Package Level 1 Units	box 1 piece
Package Level 1 Width	328 mm 12.91 in
Package Level 1 Depth / Length	365 mm 14.37 in
Package Level 1 Height	260 mm 10.24 in
Package Level 1 Gross Weight	15.67 kg 34.55 lb
Package Level 1 EAN	6417019283548

Classifications

Object Classification Code	Q
ETIM 7	EC001040 - Fuse switch disconnecter

ETIM 8	EC001040 - Fuse switch disconnecter
ETIM 9	EC001040 - Fuse switch disconnecter
eClass	V11.1 : 27371401
WEEE Category	5. Small Equipment (No External Dimension More Than 50 cm)
E-Number (Finland)	3661518
E-Number (Sweden)	3172095

Categories

Low Voltage Products and Systems → Switches → Switch Fuses

