

Intellia Protocol Translator

55000-855

Instruction Sheet
R10049GB0



Schneider Electric Fire & Security Oy

Sokerilinnantie 11 C
FI-02600 Espoo, Finland
Tel: +358 10 446 511
Website: www.schneider-electric.com
Document number: R10049GB0
Published: 17.04.2019

© 2018 – Schneider Electric. All Rights Reserved. This information is only to be used as guidance. Subject to changes and errors.

Contents

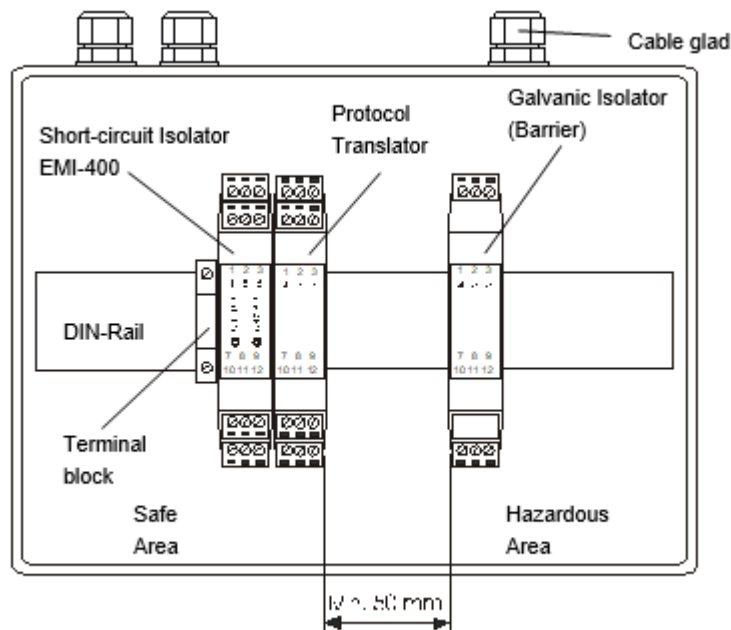
1	Intellia Protocol Translator 55000-855	4
1.1	Addressable IS configuration (a large enclosure)	4
1.2	Schematic Diagram & Wiring Connections	5
1.3	Product Codes	5

1 Intellia Protocol Translator 55000-855

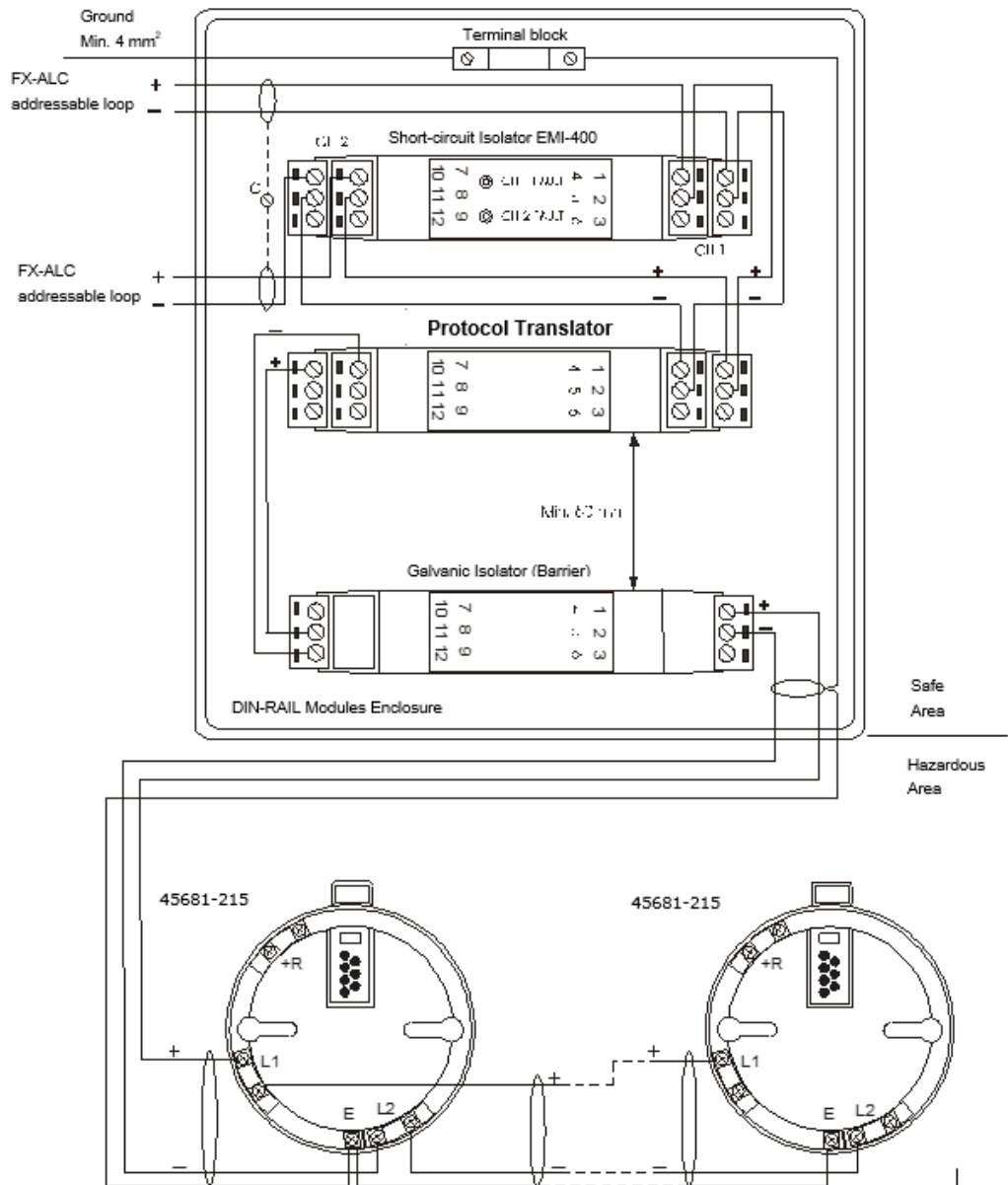
The translator is a loop-powered device which draws a low quiescent current and is therefore transparent to both the loop driver and the I.S. detectors. Since the translator is used within the safe area, i.e., before the safety barrier, no certification is necessary. The translator falls within the generic description “Safe Area Apparatus” on the certified system diagram.

The translator is housed in a moulded plastic enclosure which can be either clipped onto a standard 35 mm DIN rail (DIN 46277) or panel mounted by using pull-out latches in the base. The translator is available in single-channel or dual-channel versions. Each channel should only be connected to a single intrinsically safe circuit through an appropriate safety barrier. Each channel is thus capable of supplying up to twenty Intellia I.S. devices.

1.1 Addressable IS configuration (a large enclosure)



1.2 Schematic Diagram & Wiring Connections



1.3 Product Codes

Intellia Protocol Translator	
55000-855	FFS0672 5201