


11285300	<b>DATA SHEET</b>	
Valid from: 17.09.2018	<b>EPIC® H-DD 108 SCM / H-DD 108 BCM machined</b>	

## Description

- The H-DD series with machined crimp contacts - for a high number of pins in very tight spaces.
- The H-DD series with machined contacts is designed for a high number of pins in very tight spaces. This allows for smaller housing types to be chosen.



## General Characteristics

Series	H-DD 108
Version	Male/Female(Article 11286300)
Number of Contacts	108 + PE
Termination Methods	Crimp termination: 0.14 - 2.5 mm <sup>2</sup>
Temperature Range	-40°C to +100°C, short-term up to +125°C

## Mechanical Characteristics

Cycle of mechanical operation	100
-------------------------------	-----

## Electrical Characteristics

Rated Voltage, IEC	250 V
Rated Voltage, UL	600 V
Rated Voltage, CSA	600 V
Rated Impulse Voltage	2.5 kV
Rated Current, IEC	10 A
Rated Current, UL	8.5 A
Rated Current, CSA	10 A
Contact Resistance	< 3 mOhm
Degree of Soiling	2

## Materials and Surfaces

Contacts	Copper alloy, hard silver/gold-plated
Insulating Body	PC
Flammability Class according to UL 94	V0

## Approvals

UL-Approval, E-File-Number	E75770
VDE-Approval, VDE-REG.-Nr.	B437

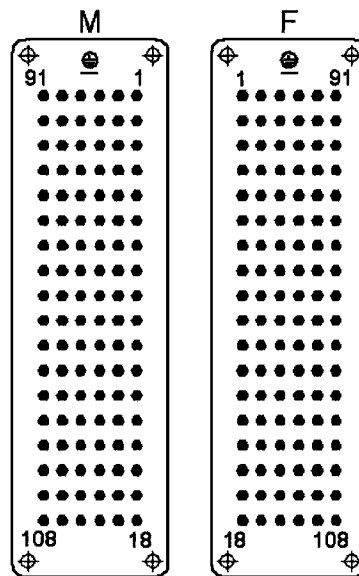
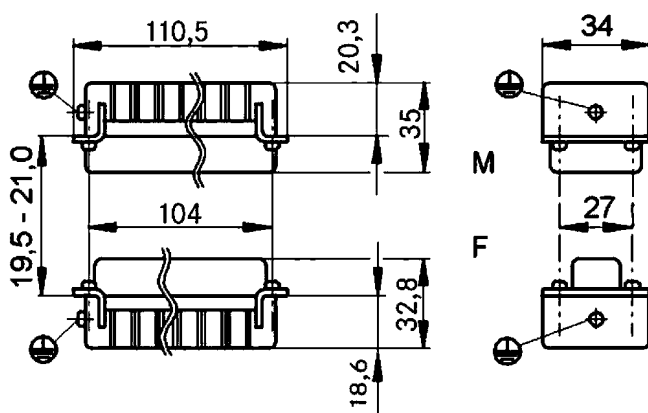
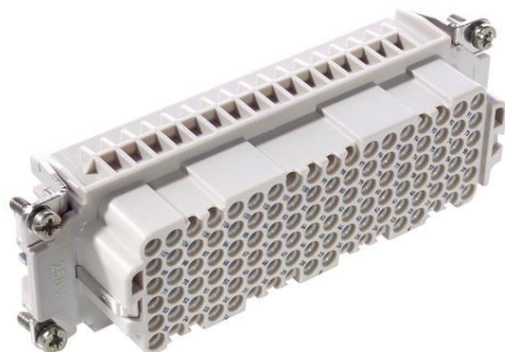
## Standard

Safety Standard	IEC 61984, UL 1977
-----------------	--------------------

Creator: MANA2/PDP Released: IVSE1/PDP	Document: DB11285300EN Version: 01	Page 1 of 2
---	---------------------------------------	-------------

11285300	<b>DATA SHEET</b>	
Valid from: 17.09.2018	EPIC® H-DD 108 SCM / H-DD 108 BCM machined	

### Technical Drawings



Industrial machinery and plant engineering



Space requirement

#### Info

Highest packing density for compact connectors  
Also as EPIC® H-DD 2160 available

#### Application range

Mechanical engineering  
Light & sound technology  
Plastics industry

#### Remark

Photographs are not to scale and do not represent detailed images of the respective products.

Creator: MANA2/PDP Released: IVSE1/PDP	Document: DB11285300EN Version: 01	Page 2 of 2
---	---------------------------------------	-------------