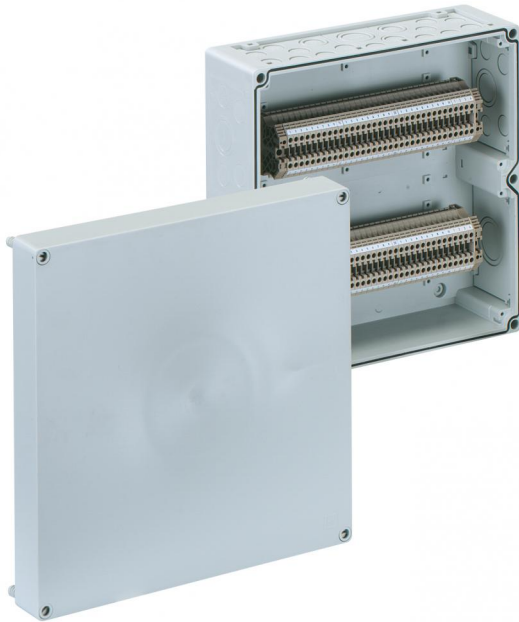


Terminal block enclosure

RKA 4/68-68x4²



RKA 4/68-68x4²

Terminal block enclosure

CUSTOMIZABLE

Productnumber: 62506801

Dimensions: 300 x 300 x 132 mm

Terminal block enclosure, with protection class IP65, Nominal cross-section 4 mm², U_i=400V AC, Polystyrene, Internal fastening points, for standard indoor installations

with 68 screw terminals 4mm³, (type Weidmüller WDU 4)

Accessories supplied:

10 Double-membrane seal IP66 M20 sealing area 7 - 12 mm, 2 Double-membrane seals IP66 M25 sealing area 9 - 16 mm, 2 Double-membrane seal M32 sealing area 14 - 21 mm, 1 Double-membrane seal IP66 M40 sealing area 19 - 28 mm

IP65

4²

400V
AC



IK07



Technical Data

electrical characteristics

Rated insulation voltage AC:	400 V
Max. conductor cross section:	4 mm ²
Protection class:	II
Type of protection:	IP65
UL Type Rating:	not specified

Dimensions

Width:	300 mm
Length:	300 mm
Height:	132 mm

Material characteristics

suitable for exterior use:	no
Industry quality:	no
Halogen free:	yes
Flammability class according with UL94:	HB
Glow-wire flammability according to EN 60695-2-11:	650 °C

mechanical properties

Type of fastening:	Wall/ceiling mounting
Impact strength:	IK07
Sealable:	yes

Ambient conditions

max. relative humidity 25°C:	95 %
max. relative humidity 40°C:	50 %
Min. ambient temperature:	-25 °C
Max. ambient temperature:	40 °C
24h ambient temperature:	35 °C

Material

Base unit material:	Polystyrene
Cover material:	Polystyrene
Sealing material:	Polyurethane
Cover screw material:	Polyamide, glass-fibre reinforced

Accessories

[19000501 - ASS-gro - External hinge set](#)

[19010001 - VSG - Padlock kit](#)

[19202001 - KS M20 - Combi set](#)

[19202501 - KS M25 - Combi set](#)

[19202601 - KS M25-gro - Combi set](#)

[19203201 - KS M32 - Combi set](#)

[19302501 - KST M25-17 - Combi connector](#)

[19302601 - KST M25-33 - Combi connector](#)

[19303201 - KST M32 - Combi connector](#)

[59110001 - AK KS-IP30 - Combi set](#)

[79100101 - AK KS-IP65 - Combi set](#)

[79300401 - AK ABL-ES - External fixing lugs](#)

Cable gland

