

MASTER Value T8 UltraEfficient



MAS LEDtube VLE 1500mm UE 22.1W 840 T8

Welcome the new Philips MASTER Value LEDtube UltraEfficient - your solution for upgrading more price-sensitive customers to ultra-efficient LED. Thanks to the cost-effective design, high energy efficiency and long service life, the new LED tube can convince with a payback time of less than 2 months, when upgrading from fluorescent tubes.

Product data

General Information	
Cap-Base	G13
Nominal lifetime	75,000 hour(s)
Switching Cycle	200,000
Lighting Technology	LED
Flux measurement reference	Sphere
Light Technical	
Color Code	840 [CCT of 4000K]
Beam Angle (Nom)	190 degree(s)
Luminous Flux	4,100 lm
Color Designation	Cool White (CW)
Correlated Color Temperature (Nom)	4000 K
Luminous Efficacy (rated) (Nom)	185 lm/W
Color Consistency	<6
Color rendering index (CRI)	80
LLMF At End Of Nominal Lifetime (Nom)	70 %
Photobiological safety according to EN 62471	RGO

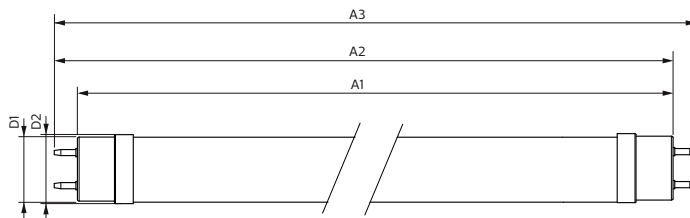
Operating and Electrical	
Input Frequency	50 to 60 Hz
Power Consumption	22.1 W
Lamp Current (Max)	105 mA
Lamp Current (Min)	95 mA
Starting Time (Nom)	0.5 s
Warm-up time to 60% light	0.5 s
Power Factor (Fraction)	0.9
Voltage (Nom)	220-240 V
Ballast Compatibility	EM/Mains
LED alternative to fluorescent lamp power	58 W
Inrush current at mains	4.8
Max. lamp no. on MCB B type 10A - Mains	79
Max. lamp no. on MCB B type 10A – EM ballast without Compensation Capacitor.	79
Max. lamp no. on MCB B type 10A – EM ballast with Compensation Capacitor.	17
Max. lamp no. on MCB B type 16A - Mains	127
Max. lamp no. on MCB B type 16A – EM ballast without Compensation Capacitor.	127

MASTER Value T8 UltraEfficient

Max. lamp no. on MCB B type 16A – EM ballast with Compensation Capacitor.	28
Temperature	
T-Case Maximum (Nom)	55 °C
Controls and Dimming	
Dimmable	No
Mechanical and Housing	
Bulb Finish	Frosted
Bulb Material	Glass
Product Length	1,500 mm
Bulb Shape	T8
Net Weight (Piece)	0.230 kg
Approval and Application	
Energy Efficiency Class	B
Energy Saving Product	Yes
Approval Marks	RoHS compliance CE marking KEMA Keur certificate
Energy Consumption kWh/1000 h	23 kWh
EPREL Registration Number	1996488
CE mark	Yes

EU RoHS compliant	Yes
LED Innovations	UltraEfficient
Flickering value (PstLM) - Flickering value as per EN 61000-3-3	1
Stroboscopic effect visibility measure (SVM)	0.4
Ambient temperature range	-20 to +45 °C
Application Conditions	
can it be used in closed luminaires	Yes
Product Data	
Order product name	MAS LEDtube VLE 1500mm UE 22.1W 840 T8
Full product name	MAS LEDtube VLE 1500mm UE 22.1W 840 T8
Full product code	872016931675100
Order code	929003807602
Material Nr. (12NC)	929003807602
Numerator - Quantity Per Pack	1
EAN/UPC - Product/Case	8720169316751
Numerator - Packs per outer box	20
EAN/UPC - Case	8720169316768

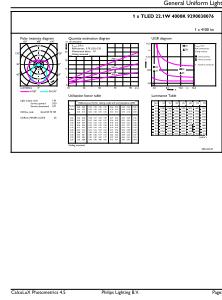
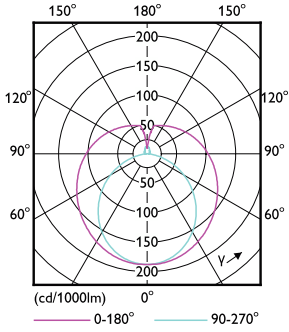
Dimensional drawing



Product	D1	D2	A1	A2	A3
MAS LEDtube VLE 1500mm UE 22.1W 840 T8	25.7 mm	28 mm	1,500 mm	1,507.1 mm	1,514.2 mm

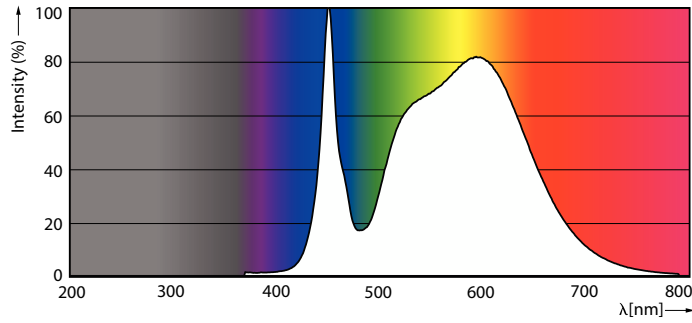
MASTER Value T8 UltraEfficient

Photometric data



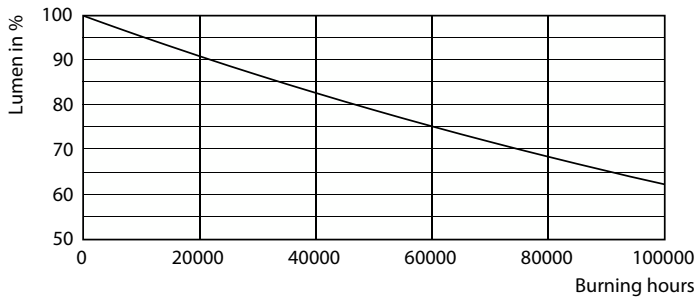
Light Distribution Diagram - MAS LEDtube VLE 1500mm UE 22.1W 840 T8

General uniform lighting - MAS LEDtube VLE 1500mm UE 22.1W 840 T8

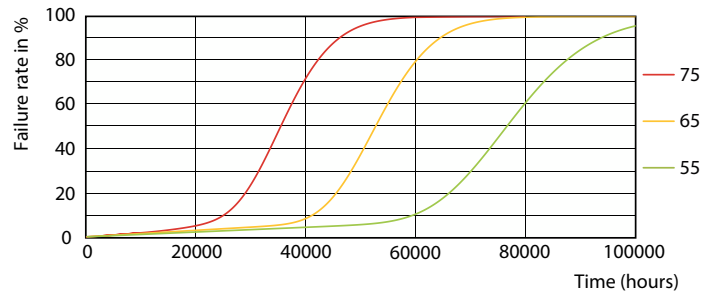


Spectral Power Distribution Colour - MAS LEDtube VLE 1500mm UE 22.1W 840 T8

Lifetime



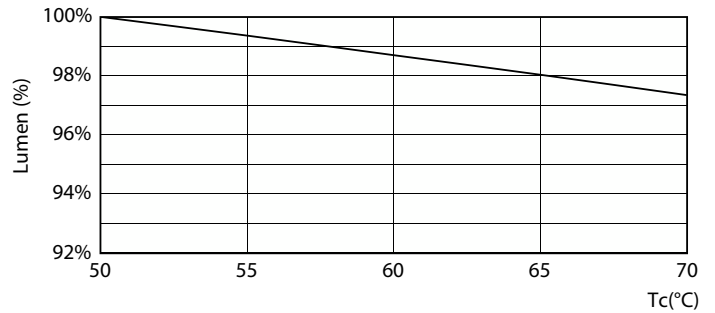
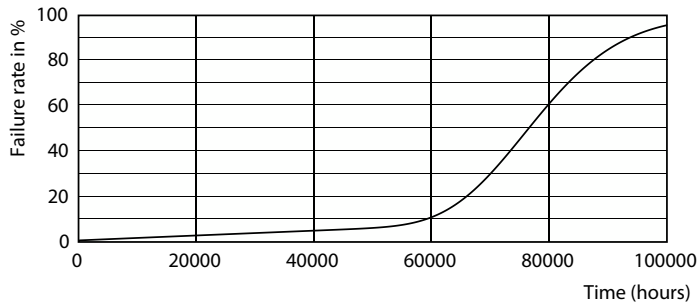
Lumen Maintenance Diagram - MAS LEDtube VLE 1500mm UE 22.1W 840 T8



LEDtube-75K-5575-FailureRate-LED

MASTER Value T8 UltraEfficient

Lifetime



Life Expectancy Diagram

Lumen Maintenance Diagram - MAS LEDtube VLE 1500mm UE 22.1W 840 T8



LifetimeVsTc

