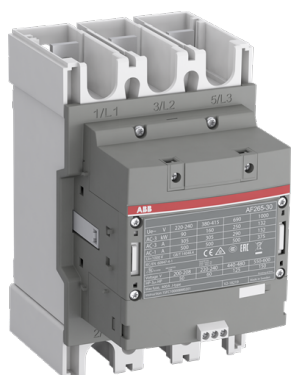


PRODUCT-DETAILS

# AF265-30-00-33

## AF265-30-00-33 Contactor



### General Information

Extended Product Type	AF265-30-00-33
Product ID	1SFL547002R3300
EAN	7320500504727
Catalog Description	AF265-30-00-33 Contactor

Long Description	The AF265-30-00-33 is a 3 pole - 1000 V IEC or 600 V UL contactor with Main Circuit Bars, controlling motors up to 132 kW / 400 V AC (AC-3) or 200 hp / 480 V UL and switching power circuits up to 400 A (AC-1) or 350 A UL general use. Thanks to the AF technology, the contactor has a wide control voltage range (100-250 V 50/60 Hz and DC), managing large control voltage variations, reducing panel energy consumptions and ensuring distinct operations in unstable networks. Furthermore, surge protection is built-in, offering a compact solution. AF contactors have a block type design, can be easily extended with add-on auxiliary contact blocks and an additional wide range of accessories.
------------------	--

### Ordering

Minimum Order Quantity	1 piece
Customs Tariff Number	85364900

### Popular Downloads

Data Sheet, Technical	1SBC100192C02
-----------------------	---------------

## Information

Instructions and Manuals	1SFC100008M0201
CAD Dimensional Drawing	2CDC001079B0201

## Dimensions

Product Net Width	140 mm
Product Net Depth / Length	195.5 mm
Product Net Height	225 mm
Product Net Weight	3.9 kg

## Technical

Number of Main Contacts NO	3
Number of Main Contacts NC	0
Number of Auxiliary Contacts NO	0
Number of Auxiliary Contacts NC	0
Rated Operational Voltage	Main Circuit 1000 V
Rated Frequency (f)	Main Circuit 60 Hz
Conventional Free-air Thermal Current ( $I_{th}$ )	acc. to IEC 60947-4-1, Open Contactors $\Theta = 40\text{ °C}$ 400 A
Rated Operational Current AC-1 ( $I_e$ )	(1000 V) 40 °C 350 A (1000 V) 60 °C 300 A (1000 V) 70 °C 240 A (690 V) 40 °C 400 A (690 V) 70 °C 290 A
Rated Operational Current AC-3 ( $I_e$ )	(415 V) 55 °C 265 A (440 V) 55 °C 265 A (500 V) 55 °C 250 A (690 V) 55 °C 250 A (1000 V) 55 °C 113 A (380 / 400 V) 55 °C 265 A (220 / 230 / 240 V) 55 °C 265
Rated Operational Power AC-3 ( $P_e$ )	(415 V) 132 kW (440 V) 160 kW (500 V) 160 kW (690 V) 200 kW (1000 V) 160 kW (380 / 400 V) 132 kW (220 / 230 / 240 V) 75 kW
Rated Breaking Capacity AC-3	8 x $I_e$ AC-3
Rated Making Capacity AC-3	10 x $I_e$ AC-3
Short-Circuit Protective Devices	gG Type Fuses 500 A
Rated Short-time Withstand Current Low Voltage ( $I_{cw}$ )	at 40 °C Ambient Temp, in Free Air, from a Cold State 10 s 2120 A at 40 °C Ambient Temp, in Free Air, from a Cold State 15 min 400 A at 40 °C Ambient Temp, in Free Air, from a Cold State 1 min 865 A at 40 °C Ambient Temp, in Free Air, from a Cold State 1 s 2650 A

at 40 °C Ambient Temp, in Free Air, from a Cold State 30 s 1224 A

Maximum Electrical Switching Frequency	(AC-1) 300 cycles per hour (AC-2 / AC-4) 150 cycles per hour (AC-3) 300 cycles per hour
Rated Insulation Voltage (U <sub>i</sub> )	acc. to IEC 60947-4-1 and VDE 0110 (Gr. C) 1000 V acc. to UL/CSA 600 V
Rated Impulse Withstand Voltage (U <sub>imp</sub> )	8 kV
Mechanical Durability	5 million
Maximum Mechanical Switching Frequency	300 cycles per hour
Coil Operating Limits	(acc. to IEC 60947-4-1) U <sub>c</sub> (at θ ≤ 70 °C)
Rated Control Circuit Voltage (U <sub>c</sub> )	50 Hz 100 ... 250 V 60 Hz 100 ... 250 V DC Operation 100 ... 250 V
Coil Consumption	Holding at Max. Rated Control Circuit Voltage 50 Hz 17.5 V·A Holding at Max. Rated Control Circuit Voltage 60 Hz 17.5 V·A Pull-in at Max. Rated Control Circuit Voltage 50 Hz 385 V·A Pull-in at Max. Rated Control Circuit Voltage 60 Hz 385 V·A Pull-in at Max. Rated Control Circuit Voltage DC 410 W
Operate Time	Between Coil De-energization and NO Contact Opening 37 ... 47 ms Between Coil Energization and NO Contact Closing 25 ... 55 ms
Degree of Protection	acc. to IEC 60529, IEC 60947-1, EN 60529 Auxiliary Terminals IP40
Terminal Type	Main Circuit: Bars

## Technical UL/CSA

NEMA Size	5
Continuous Current Rating NEMA	270 A
Horsepower Rating NEMA	(200 V AC) Three Phase 75 Hp (230 V AC) Three Phase 100 Hp (460 V AC) Three Phase 200 Hp (575 V AC) Three Phase 200 Hp
Maximum Operating Voltage UL/CSA	Main Circuit 1000 V
Horsepower Rating UL/CSA	(200 ... 208 V AC) Three Phase 40 Hp (200 V AC) Three Phase 75 hp (208 V AC) Three Phase 75 hp (220 ... 240 V AC) Three Phase 40 Hp (220 ... 240 V AC) Three Phase 100 hp (440 ... 480 V AC) Three Phase 100 Hp (440 ... 480 V AC) Three Phase 200 hp (550 ... 600 V AC) Three Phase 125 Hp (550 ... 600 V AC) Three Phase 250 hp

## Environmental

Ambient Air Temperature	Close to Contactor Fitted with Thermal O/L Relay (0.85 ... 1.1 U <sub>c</sub> ) -25 ... 55 °C Close to Contactor without Thermal O/L Relay (0.85 ... 1.1 U <sub>c</sub> ) -40 ... 70 °C Close to Contactor for Storage -40 ... 70 °C
Maximum Operating Altitude Permissible	Without Derating 3000 m
RoHS Status	Following EU Directive 2011/65/EU and Amendment 2015/863 July 22, 2019

---

## Circular Value

---

ABB EcoSolutions	Yes
Circular Design Principles Recyclability Rate	Design for Closing Resource Loops - Standard EN45555 - 76.3 %
End of Life Instructions	1SFC100112M0001
Group Waste to Landfill Target	Non-hazardous waste is sent to a landfill, where there is no alternative option available within 100km of a facility
Improved Resource Efficiency for Customers	Product Efficiency - Product considered more energy-efficient compared to similar product on market or older products from the same line
Sustainable Material Content	Recycled Metal - 33 %

---



---

## Eco Transparency

---

Environmental Product Declaration - EPD	1SFC100104D0201
--	-----------------

---



---

## Certificates and Declarations

---

ABS Certificate	14-LD1092198-PDA
BV Certificate	BV_36353_A0BV
CB Certificate	SE-89316
CCS Certificate	GB14T00030
CQC Certificate	CQC2014010304676670 CQC2014010304673866
Declaration of Conformity - CCC	2020980304001305 2020980304001068
Declaration of Conformity - CE	2CMT2015-005439
Declaration of Conformity - UKCA	2CMT2020-006118
DNV Certificate	DNV_E-14043
EAC Certificate	9AKK107046A8618
GL Certificate	GL_95073-14HH
LR Certificate	LR_14_70011(E1)
PRS Certificate	TE_2092_880423_16
RINA Certificate	ELE060313XG_002
RMRS Certificate	9AKK107045A6978
UL Certificate	20121217-E36588
UL Listing Card	UL_E36588

---



---

## Container Information

---

Package Level 1 Units	box 1 piece
Package Level 1 Width	263 mm
Package Level 1 Depth / Length	203 mm
Package Level 1 Height	289 mm
Package Level 1 Gross	4.6 kg

Weight

Package Level 1 EAN

7320500504727

---

## Classifications

---

Object Classification Code	Q
ETIM 4	EC000066 - Magnet contactor, AC-switching
ETIM 5	EC000066 - Magnet contactor, AC-switching
ETIM 6	EC000066 - Power contactor, AC switching
ETIM 7	EC000066 - Power contactor, AC switching
ETIM 8	EC000066 - Power contactor, AC switching
eClass	V11.0 : 27371003
UNSPSC	39121529
IDEA Granular Category Code (IGCC)	4758 >> Iec Contactors
E-Number (Finland)	3707513

---

---

## Categories

---

Low Voltage Products and Systems → Control Products → Contactors → Block Contactors

