



# MASTER LEDtube InstantFit HF T5



## MAS LEDtube HF 1200mm HO 26W 840 T5 OE

The Philips MASTER LEDtube integrates a LED light source into a traditional fluorescent form factor. Its unique design creates a perfectly uniform visual appearance, which cannot be distinguished from traditional fluorescent. These T5 lighting tubes are the right choice for absolute performance and are designed to stand up to everyday conditions. Unparalleled savings thanks to low energy consumption and an exceptionally long lifetime make these T5 LED tubes the choice for every demanding application.

### Product data

General Information		Photobiological safety according to EN 62471	
Cap-Base	G5		RGO
Nominal lifetime	60,000 hour(s)	<b>Operating and Electrical</b>	
Switching Cycle	50,000	Line Frequency	30K to 60K Hz
Lighting Technology	LED	Input Frequency	30K to 60K Hz
Flux measurement reference	Sphere	Power Consumption	26 W
<b>Light Technical</b>		Lamp Current (Max)	620 mA
Color Code	840 [CCT of 4000K]	Lamp Current (Min)	300 mA
Beam Angle (Nom)	200 degree(s)	Starting Time (Nom)	0.5 s
Luminous Flux	3,900 lm	Warm-up time to 60% light	0.5 s
Color Designation	Cool White (CW)	Power Factor (Fraction)	0.9
Correlated Color Temperature (Nom)	4000 K	Voltage (Nom)	20-90 V
Luminous Efficacy (rated) (Nom)	150 lm/W	Ballast Compatibility	HF
Color Consistency	<6	LED alternative to fluorescent lamp power	54 W
Color rendering index (CRI)	80	Inrush current at mains	-
LLMF At End Of Nominal Lifetime (Nom)	70 %	Max. lamp no. on MCB B type 10A - Mains	-
		Max. lamp no. on MCB B type 10A – EM ballast without Compensation Capacitor.	-

# MASTER LEDtube InstantFit HF T5

Max. lamp no. on MCB B type 10A – EM ballast with Compensation Capacitor.	-
Max. lamp no. on MCB B type 16A – Mains	-
Max. lamp no. on MCB B type 16A – EM ballast without Compensation Capacitor.	-
Max. lamp no. on MCB B type 16A – EM ballast with Compensation Capacitor.	-

## Temperature

T-Case Maximum (Nom)	50 °C
----------------------	-------

## Controls and Dimming

Dimmable	Yes - Check ballast compatibility
----------	-----------------------------------

## Mechanical and Housing

Bulb Finish	Frosted
Bulb Material	Glass
Product Length	1,200 mm
Bulb Shape	T5
Net Weight (Piece)	0.160 kg

## Approval and Application

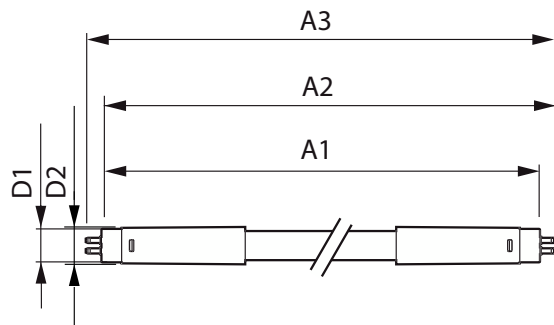
Energy Efficiency Class	D
-------------------------	---

Energy Saving Product	Yes
Approval Marks	RoHS compliance KEMA Keur certificate
Energy Consumption kWh/1000 h	26 kWh
EPREL Registration Number	1384141
CE mark	Yes
EU RoHS compliant	Yes
Ambient temperature range	-20 °C to 45 °C

## Product Data

Order product name	MAS LEDtube HF 1200mm HO 26W 840 T5 OE
Full product name	MAS LEDtube HF 1200mm HO 26W 840 T5 OE
Full product code	871869974953800
Order code	929002352102
Material Nr. (12NC)	929002352102
Numerator - Quantity Per Pack	1
EAN/UPC - Product/Case	8718699749538
Numerator - Packs per outer box	10
EAN/UPC - Case	8718699749545

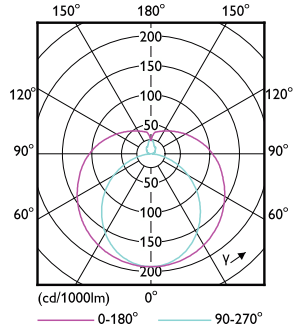
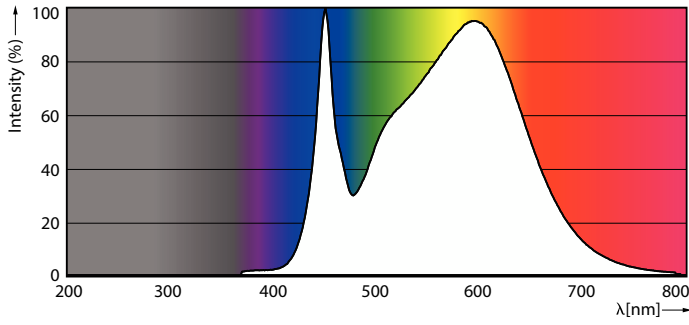
## Dimensional drawing



Product	D1	D2	A1	A2	A3
MAS LEDtube HF 1200mm HO 26W 840 T5 OE	15.5 mm	19 mm	1,149 mm	1,156 mm	1,163 mm

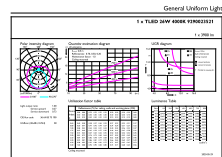
# MASTER LEDtube InstantFit HF T5

## Photometric data



Spectral Power Distribution Colour - MAS LEDtube HF 1200mm HO 26W 840 T5 OE

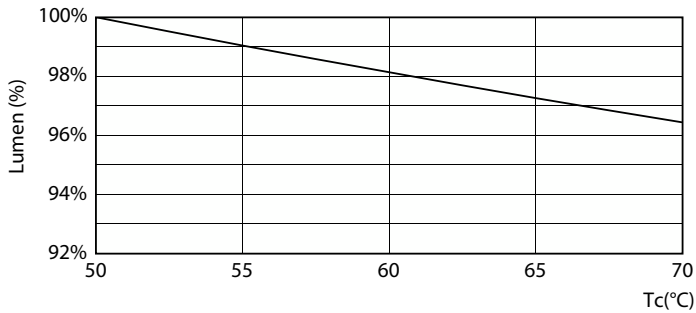
Light Distribution Diagram - MAS LEDtube HF 1200mm HO 26W 840 T5 OE



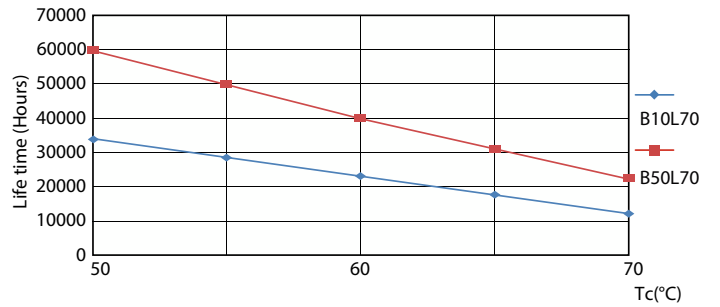
General Uniform Lighting  
© 2015 Philips Lighting B.V. Philips Lighting B.V. Page 1/1

General uniform lighting - MAS LEDtube HF 1200mm HO 26W 840 T5 OE

## Lifetime



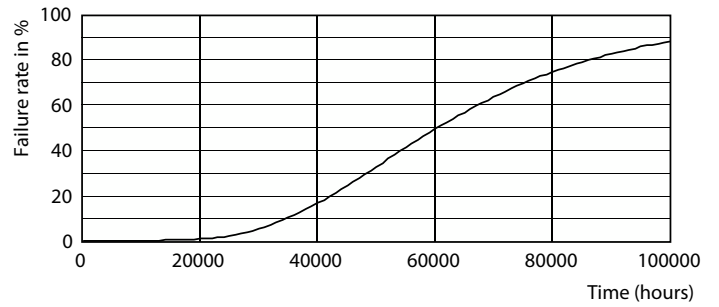
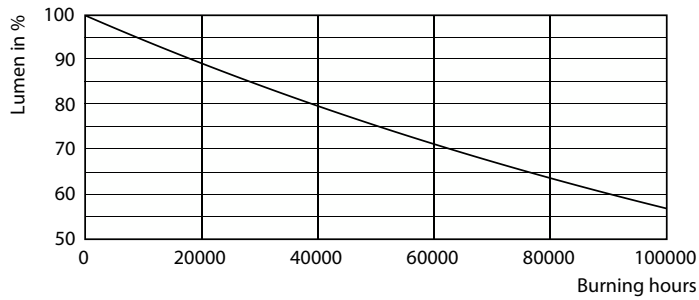
Lumen Maintenance Diagram - MAS LEDtube HF 1200mm HO 26W 840 T5 OE



LEDtube 60K 5070 LifetimeVsTc-LED

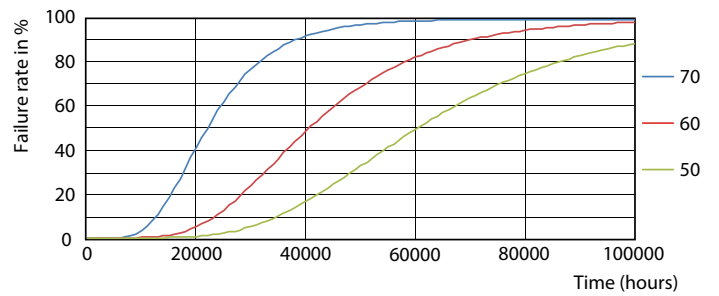
# MASTER LEDtube InstantFit HF T5

## Lifetime



Lumen Maintenance Diagram - MAS LEDtube HF 1200mm HO 26W 840 T5 OE

Life Expectancy Diagram



LEDtube 60K 5070 FailureRate-LED

