



MASTER PL-T Xtra 4 Pin

MASTER PL-T Xtra 32W/840/4P 1CT/5X10BOX

MASTER PL-T Xtra is an efficient compact fluorescent lamp, typically used in general downlights for retail, hospitality and office applications demanding higher lighting levels. MASTER PL-T Xtra lamps furthermore provide significantly lower operating costs thanks to their lifetime, which is more than double that of a standard MASTER PL-T lamp, and their very low early failure rate. The original Philips-invented bridge technology guarantees optimum performance in the application, enabling more light and higher efficacy than the bended technology. The 4-pin version is designed for operation on electronic gear and is provided with a plug-in/pull-out lamp base.

Warnings and Safety

- Lamp light technical and electrical characteristics are influenced by operating conditions, i.e. lamp ambient temperature and operating position as well as applied HF control gear
- Shorter lamp life when often switching and not well pre-heated electrodes
- A lamp breaking is extremely unlikely to have any impact on your health. If a lamp breaks, ventilate the room for 30 minutes and remove the parts, preferably with gloves. Put them in a sealed plastic bag and take it to your local waste facilities for recycling. Do not use a vacuum cleaner.

Product data

| General Information | | Chromaticity Coordinate X (Nom) | | 0.38 |
|----------------------------|--------------------|------------------------------------|--------|---------|
| Cap-Base | GX24Q-3 [GX24q-3] | Chromaticity Coordinate Y (Nom) | | 0.38 |
| Flux measurement reference | Sphere | Correlated Color Temperature (Nom) | | 4000 K |
| Light Technical | | Luminous Efficacy (rated) (Nom) | | 75 lm/W |
| Color Code | 840 [CCT of 4000K] | Color rendering index (CRI) | | 80 |
| Luminous Flux | 2,300 lumen | Operating and Electrical | | |
| Color Designation | Cool White (CW) | Power Consumption | 32.0 W | |

MASTER PL-T Xtra 4 Pin

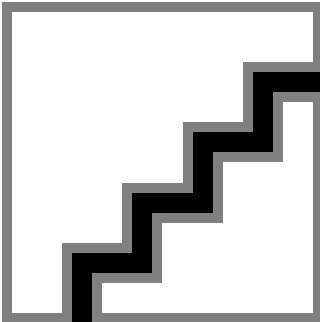
| | |
|---------------------------------|---------|
| Lamp Current (Nom) | 0.320 A |
| Controls and Dimming | |
| Dimmable | Yes |
| Approval and Application | |
| Mercury (Hg) Content (Max) | 3 mg |
| Mercury (Hg) Content (Nom) | 3.0 mg |
| Energy Consumption kWh/1000 h | 32 kWh |
| EPREL Registration Number | 423,336 |

| | |
|---------------------------------|---|
| Product Data | |
| Full product code | 871150089743570 |
| Order product name | MASTER PL-T Xtra 32W/840/4P 1CT/5X10BOX |
| Order code | 927912584014 |
| Numerator - Quantity Per Pack | 1 |
| Numerator - Packs per outer box | 50 |
| Material number (12NC) | 927912584014 |
| Full product name | MASTER PL-T Xtra 32W/840/4P 1CT/5X10BOX |
| EAN/UPC - Case | 8711500897459 |

Dimensional drawing

| Product | D (max) | A (max) | B (max) | C (max) |
|---|---------|---------|----------|----------|
| MASTER PL-T Xtra 32W/840/4P 1CT/5X10BOX | 41.0 mm | 98.7 mm | 123.0 mm | 138.7 mm |

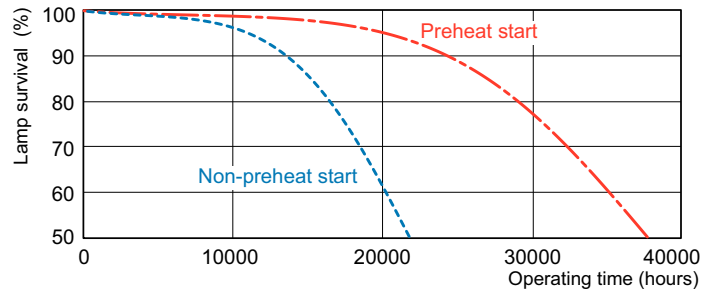
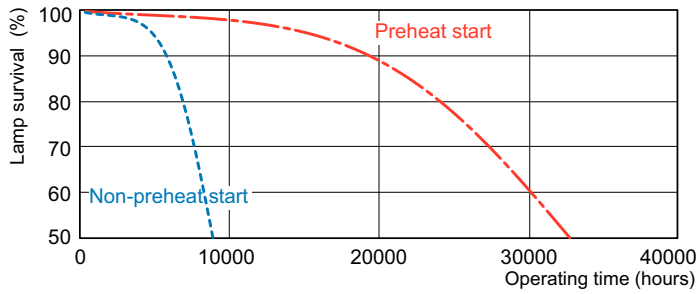
Photometric data



Spectral Power Distribution Colour - MASTER PL-T Xtra 32W/840/4P 1CT/5X10BOX

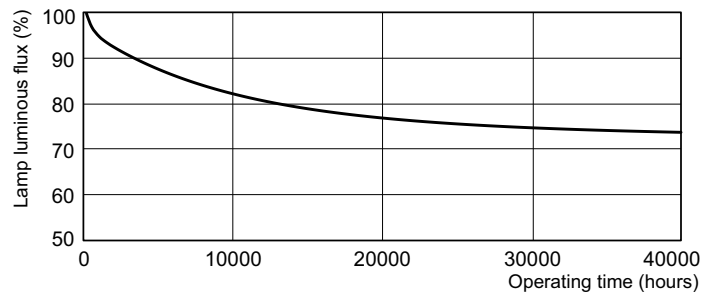
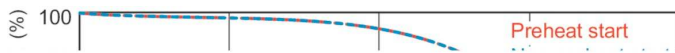
MASTER PL-T Xtra 4 Pin

Lifetime



Life Expectancy Diagram - MASTER PL-T Xtra 32W/840/4P 1CT/5X10BOX

Life Expectancy Diagram - MASTER PL-T Xtra 32W/840/4P 1CT/5X10BOX



Life Expectancy Diagram - MASTER PL-T Xtra 32W/840/4P 1CT/5X10BOX

Lumen Maintenance Diagram - MASTER PL-T Xtra 32W/840/4P 1CT/5X10BOX

