

WLD+40011_2F

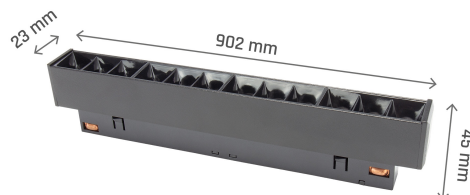
WLD+40011_2F



| | | | |
|---------------------------|---------------|-----------------|---------------|
| Power | 12 W | Voltage | 48 V |
| Colour temperature | 3000 K | Colour of light | WW |
| Beam angle | 35 ° | UGR | <19 |
| Degree of protection (IP) | IP20 | | |


Technical data

| | |
|------------------------------|----------------|
| Code | WLD+40011_2F |
| Power | 12 W |
| Nominal current | 263 mA |
| Voltage | 48 V |
| Energy consumption | 12 kWh/1000h |
| Frequency | DC Hz |
| Protection class | III |
| Manufacturer of power supply | tuobo |
| Power factor | 1 |
| Useful luminous flux* | 1200 lm (360°) |
| Luminous flux** | 820 lm (360°) |
| Lamp efficacy | 100 lm/W |
| Luminous intensity | 2580 cd |
| Colour temperature | 3000 K |
| Colour of light | WW |
| Beam angle | 35 ° |
| UGR | <19 |
| RA | >90 |
| Light source included | Yes |
| Producer of LED diodes | osram |
| Uniformity of color SDCM max | 5 |
| Dimmable | No |
| Working temperature range | -20 to +40 ° |
| Lifespan | 50000 h |
| Housing material | AL+PC |
| Degree of protection (IP) | IP20 |
| Colour | Black |
| Dimension (AxBxC) | 204x23x42 mm |
| For use | Inside |
| Assembly method | NA SZYŃE |
| Application | Inside |
| Made in | PRC |
| Other | 2F , |



Related documents



 Declaration of Conformity

