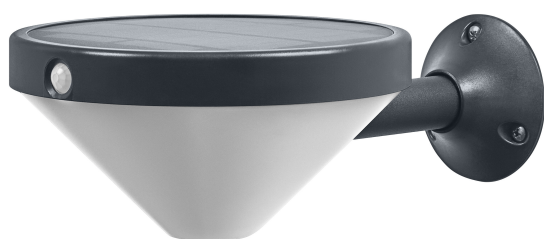


# PRODUCT DATASHEET

## ENDURA Style Solar Lunar Wall Sensor 4.5W 3000K

Endura Style solar Lunar | Outdoor Endura Style Lunar Wall Sensor



### Areas of application

- Outdoor use (IP44)
- Garages
- Building facades

### Product benefits

- Easy and quick installation
- Demand based lighting and energy saving thanks to motion and daylight sensor
- High-quality materials

### Product features

- Solar powered outdoor LED luminaire
- PIR motion detector and daylight sensor
- Color temperature: 3,000 K (Warm White)
- Battery charging via solar panel
- Adjustable luminaire head



## TECHNICAL DATA

### Electrical data

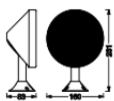
Nominal wattage	4.50 W
Nominal voltage	3,7 V
Nominal current	1160.000 mA
Protection class	III

### Photometrical data

Luminous flux	300 lm
Total luminous flux of contained light sources	500 lm
Luminous efficacy	66 lm/W
Color temperature	3000 K
Light color (designation)	Warm White
Color rendering index Ra	≥80
Standard deviation of color matching	6 sdc <sub>m</sub>
Flickering metric (Pst LM)	-
Stroboscope effect metric (SVM)	-
Photobiological safety group acc. to EN62778	RG0

### Dimensions & Weight

Length	160.00 mm
Width	231.00 mm
Height	83.00 mm
Product weight	375.00 g



ENDURA STYLE SOLAR LUNAR  
WALLSEN

### Materials & Colors

Product color	Black
Housing color	Black

Body material	Acrylonitrile butadiene styrene (ABS)
Glow Wire Test according to IEC 60695-2-12	650 °C
Mercury content	0.0 mg

### Application & Mounting

Ambient temperature range	-20...+40 °C
Type of protection	IP44
Dimmable	No
Mounting type	Surface
Application environment	Outdoor
With light source	Yes

### Lifespan

Lifespan L70/B50 at 25 °C	25000 h <sup>1)</sup>
Number of switching cycles	12500

1) t[h]: L70 / B50 @ 25 °C (Ta), t[h]: L80 / B10 @ 25 °C (Ta), t[h]: L90 / B10 @ 25 °C (Ta)

### Sensor

Type of sensor	Motion / Daylight
Sensor detection angle	100 °
Sensor controlled switching time	30 s
Detection range of motion sensor	5...8 m
Detection threshold of daylight sensor	0...25 lx

### BATTERY

Type of Battery	Lithium ion
Battery size [GMS]	18650
Number of included batteries	1
Nominal voltage of battery	3.7 V
Nominal capacity of battery	2200 mAh
Battery charging time	6 h







### Certificates & Standards

Standards	CE / UKCA
Luminaire with limited surface temperature, "D sign"	No
Ball shot safe	No
Replaceable light source (EPREL)	Not replaceable

## Safety advice

- If the battery compartment (if applicable) does not close securely, stop using the product and keep it away from children. If you think batteries might have been swallowed or placed inside any part of the body, seek immediate medical attention.
- Please avoid: Maximal ambient temperature: +35 °C. Replacement of a battery with an incorrect type that can defeat safeguard (for example, in the case of some lithium battery types). Altitude during operation: 2000 m. Disposal of a battery into fire or a hot oven, or mechanically crushing or cutting of a battery, that can result in an explosion.

## DOWNLOAD DATA

	Documents and certificates	Document name
	User instruction / safety instructions	ENDURA STYLE SOLAR WALL SENSOR LUNAR
	Legal information	Legal insert SMART OUTD ENDURA SOLAR WORKLIGHT BAT
	Declarations of conformity	CE Declaration of conformity ENDURA STYLE SOLAR
	Declarations of conformity UKCA	UKCA Declaration of conformity ENDURA STYLE SOLAR
	Declarations of conformity UKCA	UKCA Declaration Endura Style Solar
	Declarations of conformity UKCA	Fixed LUM

## LOGISTICAL DATA

Product code	Packaging unit (Pieces/Unit)	Dimensions (length x width x height)	Gross weight	Volume
4058075766280	Folding box 1	170 mm x 170 mm x 95 mm	429.00 g	2.75 dm <sup>3</sup>
4058075766297	Shipping box 4	360 mm x 190 mm x 220 mm	2196.00 g	15.05 dm <sup>3</sup>

The mentioned product code describes the smallest quantity unit which can be ordered. One shipping unit can contain one or more single products. When placing an order, for the quantity please enter single or multiples of a shipping unit.

## DISCLAIMER

Subject to change without notice. Errors and omission excepted. Always make sure to use the most recent release.