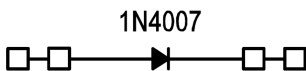
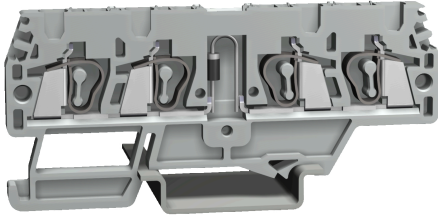
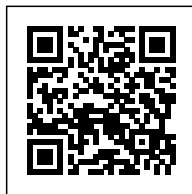


Spring-clamp terminal block 2+2
2.5mm2, 1-level, grey color, with diode



Series	HMM
Code	HM598GR
Type	HMM.2/2+2/D1A/GR
HS code	85369010
Colour	grey
TECHNICAL FEATURES	
Function/Type	With 1 A diode
Rated cross-section	2.5 mm ²
Connecting capacity	
Flexible wire	0.2-4 mm ²
Rigid wire	0.2-4 mm ²
Wire with ferrule - ferrule type	2.5 mm ² – WP25/14
Electrical characteristics according to IEC EN standard	
Maximum voltage AC/DC	800 V
Maximum current (rated cross-section)	1 A (1)
Caliber	A3
Type of component	Diode (1N4007)
Rated voltage	1000 V _{rrm} / 1.1 V _f
Rated impulse withstand voltage / pollution degree	1 kV / 3 (1)
Insulation stripping length	10 mm
Width (pitch)	5.2 mm
Length	82 mm
Height mounted on TH35-7.5/TH35-15/G32	41 / 49 / – mm
Insulation material temperature index (EN 60216-1)	130 °C
Plastic material	Polyamide UL94V-0
ACCESSORIES	
End section	
Grey	HMT.2/2+2/PT/GR (cod. HM521GR)
Blue	–
Thickness	1.5 mm
Cross-connection	
Model A)	–
Model B)	–
Coloured partition plate	–
Cross-connection barrier	–
Test plug	SDD/1 (cod. DD001)
Modular test plug	SDH/5 (cod. DH005)
End section for modular test plug	SH5/PT (cod. DH501)
Marking	
Single marking tag	CNU/8/51 (cod. NU0851S)
Single marking tag for pitch insertion	–
End bracket	
TH35 screw type	BT/3 (cod. BT003)
TH35 snap-fit type	BTO (cod. BT007)
TH35 and G32 snap-fit type	BTU (cod. BT005)
DIN rail according to IEC 60715/TH35	PR/3/..
APPROVALS AND MARKINGS	



DESCRIZIONE DEL PRODOTTO

HMM.2/2+2/D1A/GR
Spring-clamp terminal block 2+2 2.5mm2, 1-level, grey color, with diode