



W916395460111

**⚠ ⚠ DANGER / DANGER / GEFAHR / PELIGRO / PERICOLO / ОПАСНОСТЬ / 危險**

**HAZARD OF ELECTRIC SHOCK, EXPLOSION, OR ARC FLASH**

Disconnect all power before servicing equipment.  
**Failure to follow these instructions will result in death or serious injury.**

**RISQUE D'ÉLECTROCUTION, D'EXPLOSION OU D'ECLAIR D'ARC ELECTRIQUE**

Coupez toutes les alimentations avant de travailler sur cet appareil.  
**Si ces directives ne sont pas respectées, cela entraînera la mort ou des blessures graves.**

**GEFAHR VON ELEKTRISCHEM SCHLAG, EXPLOSION ODER LICHTBOGEN**

Vor dem Arbeiten am Gerät alle Spannungsversorgungen abschalten.  
**Die Nichtbeachtung dieser Anweisungen führt zu Tod oder schweren Verletzungen.**

**PELIGRO DE DESCARGA ELÉCTRICA, EXPLOSIÓN O ARCO ELECTRICO**

Desconecte todas las alimentaciones antes de manipular el producto.  
**El incumplimiento de estas instrucciones podrá causar la muerte o lesiones serias.**

**RISCHIO DI SCARICA ELETTRICA , ESPLOSIONE O ARCO ELETTRICO**

Scollegare l'apparecchio da tutti i circuiti di alimentazione prima di qualsiasi intervento.  
**Il mancato rispetto di queste istruzioni provocherà morte o gravi infortuni.**

**Опасность поражением электрическим током, опасност взрыва или вспышки дуги.**

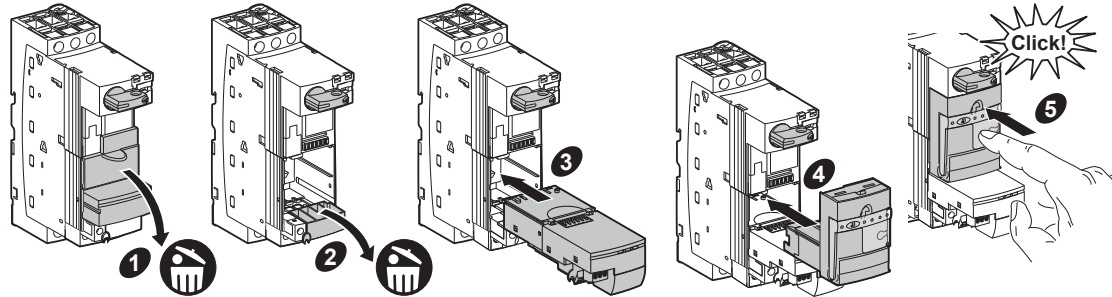
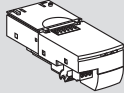
Перед обслуживанием или ремонтом убедитесь, что питание отключено.  
**Несоблюдение этих инструкций приведет к смерти или серьезной травме.**

可能有触电、爆炸或者电弧灼伤的危險

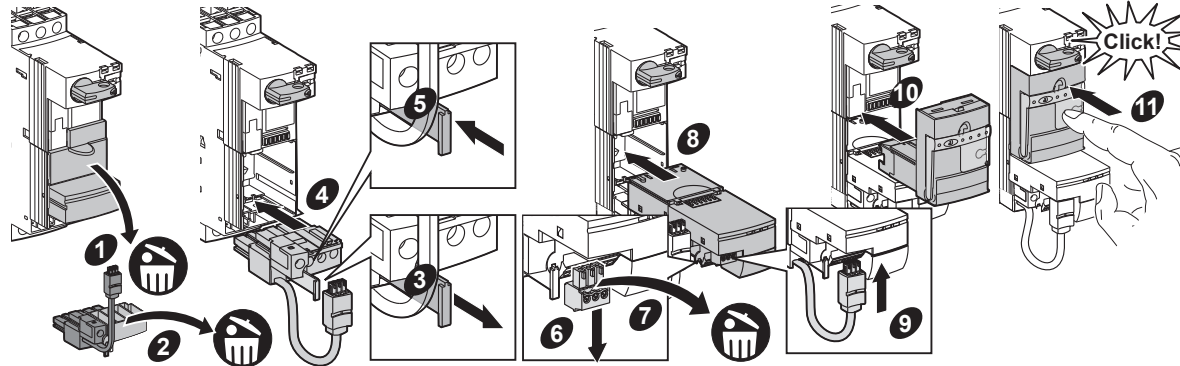
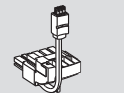
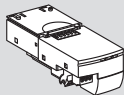
在此电力设备上进行操作时，请先断开所有电源  
不遵循上述规定将可能导致人员伤亡。



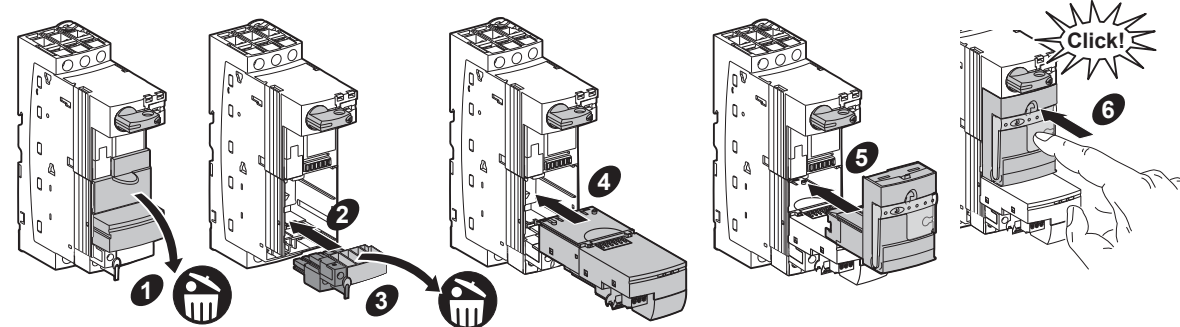
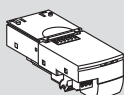
**B**  
LUB...  
+LULC15



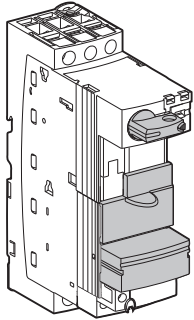
**B'**  
LUB...0  
+LULC15  
+LU9BN11L



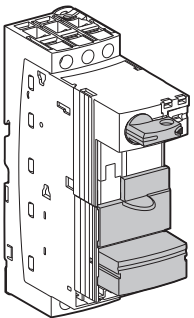
**B''**  
LUB...0  
+LULC15  
+LU9BN11



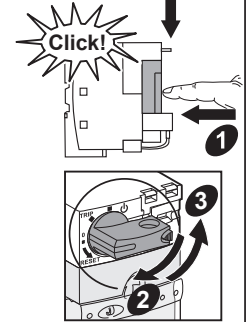
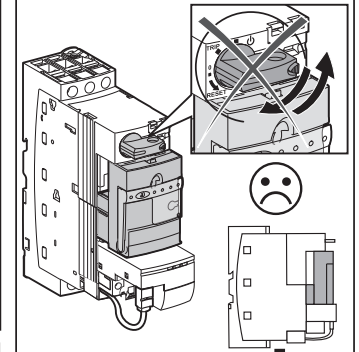
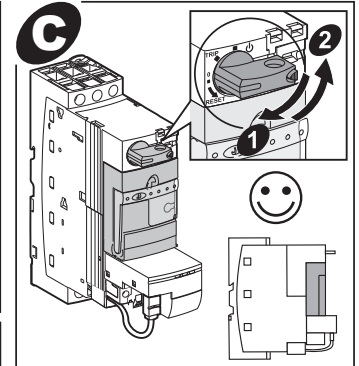
**A**  
LUB...

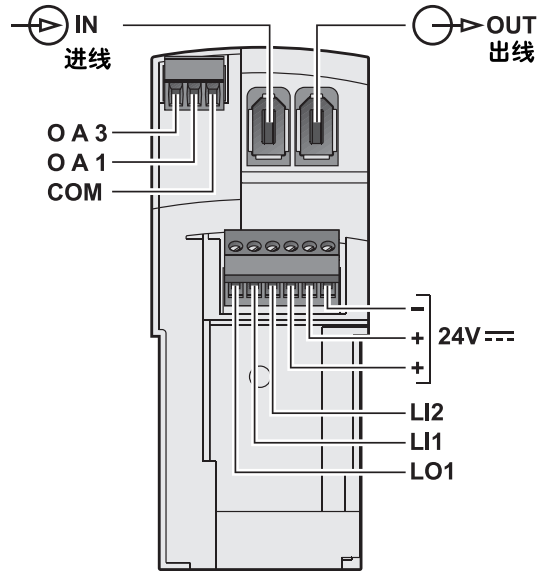
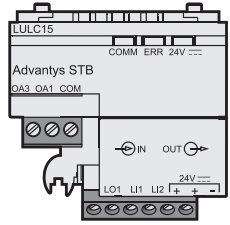


LUB...0



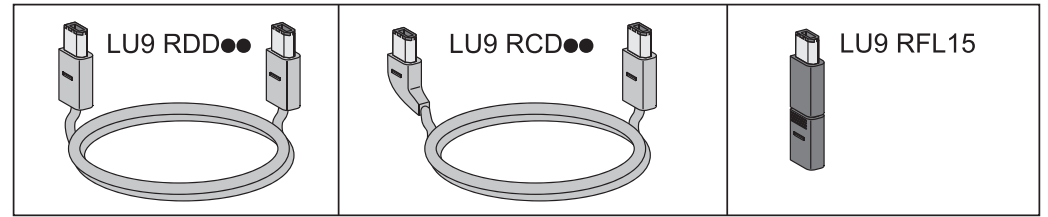
LU9BN11





7 mm	Ø2,5 mm	Ø2 mm	0,25 N.m
0.27 in.	Ø0.09 in.	Ø0.07 in.	2.2 lb-in.

0,25...0,5 mm <sup>2</sup>	0,14...1 mm <sup>2</sup>	0,14...0,75 mm <sup>2</sup>	0,14...1 mm <sup>2</sup>	0,14...0,5 mm <sup>2</sup>
AWG 24...20	AWG 26...18	AWG 26...20	AWG 26...18	AWG 26...20



[www.se.com/docs](http://www.se.com/docs)  
TeSys U LULC15 Advantys STB  
ref : 1744083

