

PRODUCT DATASHEET

LS AY AC-CP P2 300 P

CONNECTOR FOR AC MAINS DIRECT | LED strip connector for AC mains supply



Areas of application

- General indoor illumination
- General outdoor illumination

Product benefits

- Easy installation of connector, no manual wiring required
- Simple and quick installation thanks to twist lock functionality

Product features

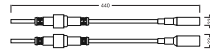
- Safe and professional connector of LED strips for 220-240V AC mains supply via prewired integrated over-current protection (3.15A)
- Type of protection: IP66

TECHNICAL DATA

Electrical data

Type of current	AC
-----------------	----

Dimensions & Weight



Length	440 mm
Width	23 mm
Height	23 mm
Cable cross-section, input side	1.0 mm ²
Product weight	78.00 g

Colors & materials

Product color	White
Body material	Polycarbonate (PC)

Temperatures & operating conditions

Ambient temperature range	-20...+45 °C
Temperature range in operation	-20...+45 °C
Permitted rel. humidity during operation	0...93 %



Additional product data




Product remark	Available from September 2024
----------------	-------------------------------


LOGISTICAL DATA

Temperature range at storage	-20...+80 °C
------------------------------	--------------

DOWNLOAD DATA

Documents and certificates	Document name
 User instruction / safety instructions	UI_LED STRIP_HV
 Legal information	Informationstext 18 Abs 4 ElektroG

Documents and certificates		Document name
	Legal information	Safety Insert G11201420
	Declarations of conformity	LS LUM
	Declarations of conformity UKCA	LS LUM

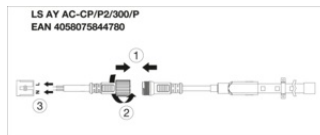
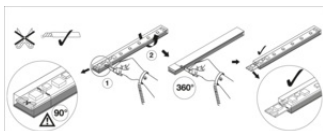
Tender texts		Document name
	Tender documents	CONNECTOR FOR AC MAINS DIRECT P2 300 P-en

LOGISTICAL DATA

Product code	Packaging unit (Pieces/Unit)	Dimensions (length x width x height)	Gross weight	Volume
4058075844780	BAG 1	200 mm x 250 mm x 20 mm	94.00 g	1.00 dm ³
4058075844797	Shipping box 50	347 mm x 347 mm x 204 mm	5193.00 g	24.56 dm ³

The mentioned product code describes the smallest quantity unit which can be ordered. One shipping unit can contain one or more single products. When placing an order, for the quantity please enter single or multiples of a shipping unit.

ADDITIONAL CATALOG INFORMATION



DISCLAIMER

Subject to change without notice. Errors and omission excepted. Always make sure to use the most recent release.