

# SYSTEM SHIFT - GRID S

WLD+40011

See  
more

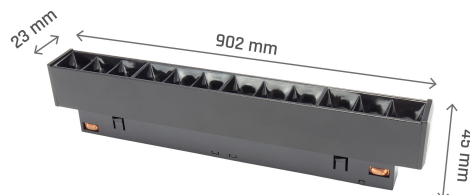
On track luminaire SYSTEM SHIFT - GRID S, with a power of 12 W, high light efficacy 100 lm/W. It is made of high-quality components, supported by a 5-year warranty. It also stands out for its very high colour rendering index RA>90. It shines with a warm light (3000K), which promotes relaxation and rest, making the illuminated room cosier. Narrow beam angle 35° gives directional light so that selected objects or surfaces can be better exposed. Designed to be mounted on a track.



Power	<b>12 W</b>	Voltage	<b>48 V</b>
Colour temperature	<b>3000 K</b>	Colour of light	<b>WW</b>
Beam angle	<b>35 °</b>	UGR	<b>&lt;19</b>
Degree of protection (IP)	<b>IP20</b>		


## Technical data

Code	WLD+40011
Power	12 W
Nominal current	263 mA
Voltage	48 V
Energy consumption	12 kWh/1000h
Frequency	DC Hz
Protection class	III
Power factor	1
Useful luminous flux*	1200 lm (360°)
Luminous flux**	750 lm (360°)
Lamp efficacy	100 lm/W
Luminous intensity	2580 cd
Colour temperature	3000 K
Colour of light	WW
Beam angle	35 °
UGR	<19
RA	>90
Light source included	Yes
Producer of LED diodes	osram
Uniformity of color SDCM max	5
Dimmable	No
Working temperature range	-20 to +40 °
Lifespan	50000 h
Housing material	AL+PC
Degree of protection (IP)	IP20
Colour	Czarny
Dimension (AxBxC)	204x23x42 mm
For use	Inside
Assembly method	NA SZYŃĘ
Application	Inside
Made in	PRC



## Related documents



 User manual



 Declaration of Conformity




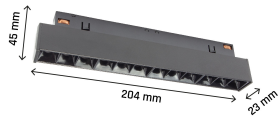
 Photometric file



 3D model




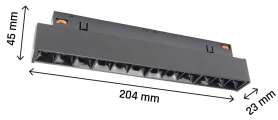
48V 



Luminaire assembly within the track on "click" and its free arrangement



48V 



Luminaire assembly within the track on "click" and its free arrangement

