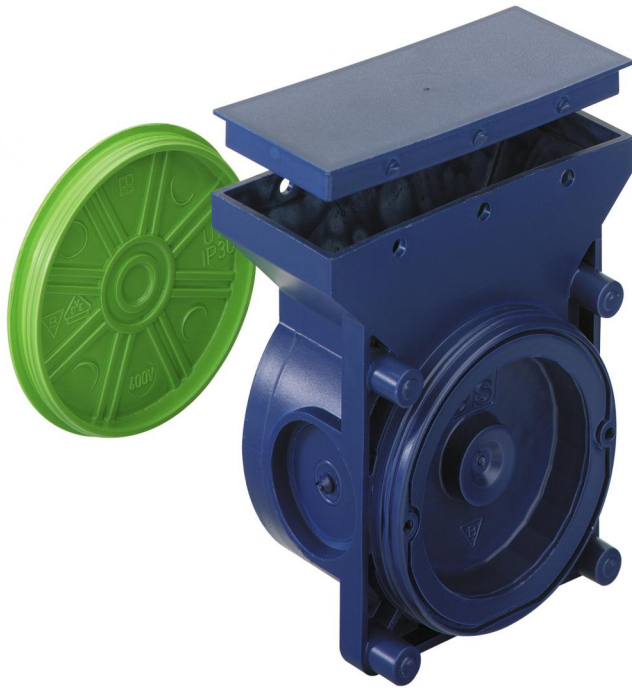


Junction boxes

VBK



VBK

Junction boxes

Productnumber: 97069001

Dimensions: 95 x 90 x 50 mm

Junction boxes, as a wall/ceiling transfer in large panel construction, with protection class IP30, Rated insulation voltage: 400V AC, Halogen free

membrane for perforation, Sealing area M16 - M25



Technical Data

electrical characteristics

Rated insulation voltage AC:	400 V
Type of protection:	IP30
Suitable for:	Concrete construction
UL Type Rating:	not specified

Dimensions

Width:	95 mm
Length:	90 mm
Height:	50 mm

Material characteristics

Industry quality:	no
Halogen free:	yes
Flammability class according with UL94:	HB
Glow-wire flammability according to EN 60695-2-11:	650 °C

Ambient conditions

max. relative humidity 25°C:	- %
max. relative humidity 40°C:	50 %
Min. ambient temperature:	-25 °C
Max. ambient temperature:	40 °C
24h ambient temperature:	35 °C

Material

Base unit material:	Polypropylene
Cover material:	Polypropylene

Accessories

[97910001 - VD 75 - sealing plate](#)

[19599501 - LFR - Stepped drill](#)

[97022501 - RVB 25 - Conduit coupling](#)

[97810001 - IBT LZA-OE - Hole punch](#)

[97811801 - IBT LZA-18 - Hole punch](#)

[97812301 - IBT LZA-23 - Hole punch](#)

[97881401 - IBT STE-LST/14 - Punch set](#)

[97881801 - IBT STE-LST/18 - Punch set](#)

[97882301 - IBT STE-LST/23 - Punch set](#)

[97883001 - IBT STE-LST/30 - Punch set](#)

[97883901 - IBT STE-LST/39 - Punch set](#)

[97891801 - IBT STE-LZA/18 - Punch set](#)

[97892301 - IBT STE-LZA/23 - Punch set](#)

[97924001 - NAS-AL - IBT Accessories](#)

[97924201 - NA-AL - IBT Accessories](#)

[97924301 - NA-AL/gl - IBT Accessories](#)

Cable gland

$3x \leq \varnothing 28,3 \text{ mm}$

