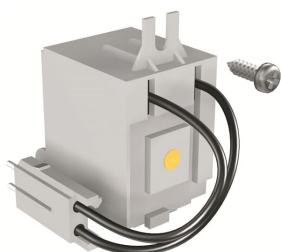


PRODUCT-DETAILS

SOR-C T4-T5-T6 220..240Vac - 220..250Vdc

SOR-C T4-T5-T6 220..240Vac - 220..250Vdc



**General Information**

Extended Product Type	SOR-C T4-T5-T6 220..240Vac - 220..250Vdc
Product ID	1SDA054873R1
EAN	8015644560010
Catalog Description	SOR-C T4-T5-T6 220..240Vac - 220..250Vdc
Long Description	SHUNT OPENING RELEASE WIRED 220...240V AC-220...250V DC T4-T5-T6

**Circular Value**

Conflict Minerals Reporting Template (CMRT)	9AKK108467A5658
Toxic Substances Control Act - TSCA	9AKK108467A8326

**Environmental**

Environmental Information	9AKK108467A6707
REACH Declaration	9AKK108466A1425
RoHS Information	9AKK108466A1424
RoHS Status	Following EU Directive 2011/65/EU and Amendment 2015/863 July 22, 2019

**Ordering**

Order Code US and	KT5S2
-------------------	-------

Canada	
E-Number (Finland)	3655624
E-Number (Sweden)	3180968
EAN	8015644560010
Minimum Order Quantity	1 piece
Customs Tariff Number	85362090

## Dimensions

Product Net Weight	0.369 kg
--------------------	----------

## Container Information

Package Level 1 Units	1 piece
Package Level 1 Width	120 mm
Package Level 1 Height	160 mm
Package Level 1 Depth / Length	188 mm
Package Level 1 Gross Weight	0.388 kg
Package Level 1 EAN	8015644560010

## Additional Information

Configuration Type	Loose or configurable
Current Type	AC/DC
Product Main Type	Accessories for Tmax T
Product Name	Accessory
Product Type	Accessory
Rated Voltage (U <sub>r</sub> )	220 ... 240 V AC 220 ... 250 V DC
Standards	IEC
Suitable For	T4, T5, T6
Suitable for Product Class	SACE Tmax T

## Certificates and Declarations

Data Sheet, Technical Information	1SDC210015D0208 1SDC210300D0201
Declaration of Conformity - CE	Refer to the EU Declaration of the relative Circuit Breaker
Instructions and Manuals	1SDH000436R0602

## Classifications

ETIM 7	EC002483 - Switch spool for power circuit breaker
ETIM 8	EC002483 - Switch spool for power circuit breaker
ETIM 9	EC002483 - Switch spool for power circuit breaker
IDEA Granular Category Code (IGCC)	4879 >> Shunt release (for power circuit breaker)
Object Classification Code	Q
UNSPSC	39121601
WEEE Category	5. Small Equipment (No External Dimension More Than 50 cm)
eClass	V11.1 : 27370421

---

## Categories

---

Low Voltage Products and Systems → Circuit Breakers → Moulded Case Circuit Breakers → Accessories for Formula DSA

Low Voltage Products and Systems → Circuit Breakers → Moulded Case Circuit Breakers → Accessories for Tmax T

