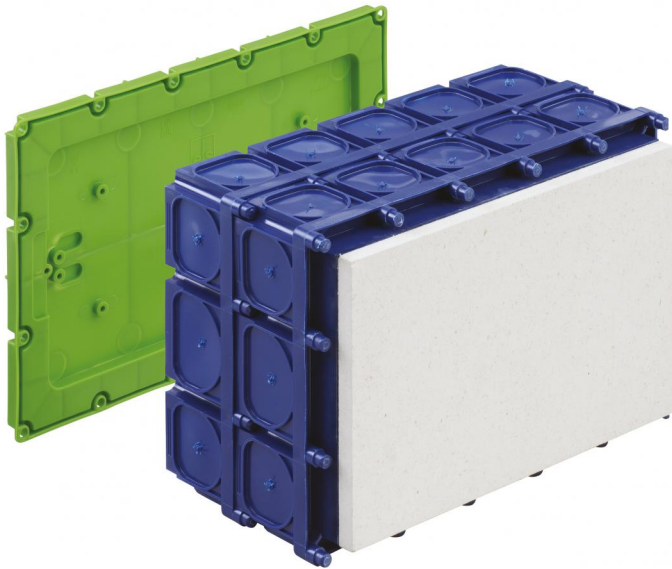


Universal mounting enclosure

K4-H-P EK



K4-H-P EK

Universal mounting enclosure

Productnumber: 98000601

Dimensions: 311 x 202 x 158 mm

Universal mounting enclosure, for installing LV/HV/LED luminaires and loudspeakers, prepared to take the WK terminal blocks 2.5 - 25 mm², suitable to take a 40-pole telephone terminal strip, as a telephone continuity box acc. to DIN 47614-615 or as a small distribution board in combination with the UP 015 (1-row, 15 distribution units), with protection class IP30, Rated insulation voltage: 400V AC, Halogen free

Fermacell® plasterboard with recess (max. load-bearing capacity 10 kg), variable to max. 220 x 150 mm, max. installation height LV lights: 130 mm, HV lights: 135 mm, electronic transformer up to max. 150 VA, lamp output max. 50W/LED 40W, magnet and nail installation, membrane for perforation, Sealing area M16 - M50, support spar compatible



Technical Data

electrical characteristics

Rated insulation voltage AC:	400 V
Type of protection:	IP30
Suitable for:	Concrete construction
UL Type Rating:	not specified

Colours

Cover colour:	other
---------------	-------

Dimensions

Width:	311 mm
Length:	202 mm
Height:	158 mm

Material characteristics

Industry quality:	no
Halogen free:	yes
Flammability class according with UL94:	HB
Glow-wire flammability according to EN 60695-2-11:	650 °C

mechanical properties

Type of fastening:	magnet and nail installation
--------------------	------------------------------

Ambient conditions

max. relative humidity 25°C:	- %
max. relative humidity 40°C:	50 %
Min. ambient temperature:	-25 °C
Max. ambient temperature:	40 °C
24h ambient temperature:	35 °C

Material

Base unit material:	Polypropylene
Cover material:	Polypropylene

Accessories

[98010401 - K4 VD - sealing plate](#)

[19599501 - LFR - Stepped drill](#)

[97022501 - RVB 25 - Conduit coupling](#)

[97810001 - IBT LZA-OE - Hole punch](#)

[97811801 - IBT LZA-18 - Hole punch](#)

[97812301 - IBT LZA-23 - Hole punch](#)

[97881401 - IBT STE-LST/14 - Punch set](#)

[97881801 - IBT STE-LST/18 - Punch set](#)

[97882301 - IBT STE-LST/23 - Punch set](#)

[97883001 - IBT STE-LST/30 - Punch set](#)

[97883901 - IBT STE-LST/39 - Punch set](#)

[97891801 - IBT STE-LZA/18 - Punch set](#)

[97892301 - IBT STE-LZA/23 - Punch set](#)

[97924001 - NAS-AL - IBT Accessories](#)

[97924201 - NA-AL - IBT Accessories](#)

[97924301 - NA-AL/gl - IBT Accessories](#)

[97926001 - ANSW - IBT Accessories](#)

[97953601 - STH-ELP - Cartridge insert](#)

[97957001 - STH 70 - Support spar](#)

[97959001 - STH 90 - Support spar](#)

[97960001 - STH 100 - Support spar](#)

[97961001 - STH 110 - Support spar](#)

[97963001 - STH 130 - Support spar](#)

[97964001 - STH 140 - Support spar](#)

[97965001 - STH 150 - Support spar](#)

[97967001 - STH 170 - Support spar](#)

[97969001 - STH 190 - Support spar](#)

[97973001 - STH 230 - Support spar](#)

[97974001 - STH 240 - Support spar](#)

[97979001 - STH 290 - Support spar](#)

Cable gland

