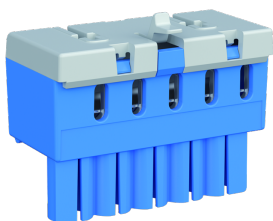


PRODUCT-DETAILS

# ZK50B

## ZK50B Terminals



### General Information

Extended Product Type	ZK50B
Product ID	2CPX062750R9999
EAN	4011617627500
Catalog Description	ZK50B Terminals
Long Description	N quick plug-in terminal for plug-in carrier, assembly without tools using simple plug-in and latching equipment, clear color-coding: N = blue, flexible terminal system for multiple N-circuits, number of terminals: 5 x 1.5 - 4 mm <sup>2</sup> (spring clamp technology) + 0 x 2.5 to 25 mm <sup>2</sup> (screw connection technology), external dimensions H x W x D in mm: 23 x 32 x 21 mm, simple labelling of the terminal points (DIN VDE 0603 Part 1) with pre-printed, self-adhesive number strips.

### Technical

Rated Voltage (U <sub>r</sub> )	230 V
Rated Operational Voltage	Maximum 230 V
Operational Voltage	230 V
Rated Current (I <sub>n</sub> )	63 A
Number of Poles	1
Number of Clamp Positions	5
Number of Line Terminals	5
Accessory Type	terminals

Enclosure Type	Terminals
Terminal Connection Type	N-Terminal
Color	Blue
Rated Cross-Section	2 - Fine-Strand with Cable End Sleeve 1.5...2.5 mm <sup>2</sup>
Terminal Type	Quick-Terminal

## Environmental

RoHS Status	Following EU Directive 2011/65/EU and Amendment 2015/863 July 22, 2019
RoHS Information	9AKK107992A8137 9AKK108468A2671
REACH Declaration	2CPC100005X0201
Conflict Minerals Reporting Template (CMRT)	9AKK108468A3363

## Dimensions

Product Net Width	32 mm
Product Net Height	23 mm
Product Net Depth / Length	21 mm
Product Net Weight	0.02 kg

## Ordering

Minimum Order Quantity	1 piece
Package Level 1 Units	pack 1 piece
Package Level 1 Gross Weight	0.021 kg
E-Number (Sweden)	2200277

## Certificates and Declarations

Declaration of Conformity - CE	9AKK107992A8137 9AKK108468A2671
--------------------------------	------------------------------------

## Installation

Instructions and Manuals	2CPC130114M5601
--------------------------	-----------------

## Popular Downloads

Data Sheet, Technical Information	2CPC000001C0101 2CPC000002C0101 2CPC000377C0101
-----------------------------------	---

## Classifications

ETIM 8	EC000446 - Push in terminal
ETIM 9	EC000446 - Push in terminal
WEEE Category	5. Small Equipment (No External Dimension More Than 50 cm)

WEEE B2C / B2B	Business To Consumer
CN8	85366990
eClass	V11.0 : 27141104
Object Classification Code	U

---

## Categories

---

Low Voltage Products and Systems → Enclosures → Consumer Units → Consumer Units → Accessories for Empty Consumer Units

