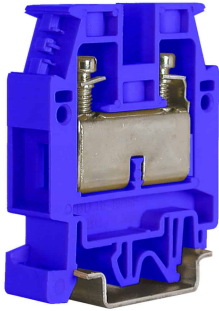

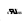




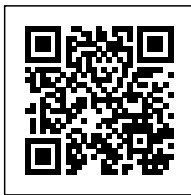


Screw terminal block 16mm²,
1-level, blue color, CBD series



Series	CBD
Code	CBX52
Type	CBD.16 (Ex)i
HS code	85369010
Colour	blue
TECHNICAL FEATURES	
Function/Type	Feed-through
Rated cross-section	16 mm ²
Connecting capacity	
Flexible wire	0.5-25 mm ²
Rigid wire	0.5-25 mm ²
Wire with ferrule - ferrule type	16 mm ² – WP160/22
Electrical characteristics according to IEC EN standard	
Maximum voltage AC/DC	1000 V
Maximum current (rated cross-section)	76 A
Caliber	B7
Electrical characteristics according to UL Standard	
Maximum voltage AC/DC	600 V
Maximum current (rated cross-section)	100 A
Section (min-max)	20-3 (AWG)
Tightening torque value (UL)	2.25 lb.in
Electrical characteristics according to ATEX directive and IEC Ex standard	
Maximum voltage AC/DC	630 / 630 V
Maximum current (rated cross-section)	76 A
Operating temperature Min/Max	-40 °C / +110 °C
Rated impulse withstand voltage / pollution degree	12 kV / 3
Insulation stripping length	18 mm
Tightening torque value (nom. / max.)	1.8 / 3 Nm
Width (pitch)	12 mm
Length	47 mm
Height mounted on TH35-7.5/TH35-15/G32	57 / 65 / 61 mm
Insulation material temperature index (EN 60216-1)	130 °C
Plastic material	Polyamide UL94V-0
ACCESSORIES	
End section	
Grey	-
Blue	CB16/PT (Ex)i (cod.CBX53)
Beige	CB16/PT (cod.CB511)
Thickness	1.5 mm
Cross-connection	
Model A)	POF/44 (cod.POF44) – PFX/44 (cod. PFX44)
Model B)	-
Rated current carrying capacity IEC/ATEX	76 A / 76 A
Switchable cross-connection	POS/44 (cod. POS44)
Multiple cross-connection bar	PMP/05/21 (cod. PMP05) 21 poles
Shunting screw and sleeve (Standard / Exe)	CPM/44 (cod. CPM44) – CPX/44 (cod. CPX44)
Protection cover	PRP/7 (cod. PRP07)
Coloured partition plate	DFU/4/R (cod. DU04R)
Cross-connection barrier	DFM/700 (cod. DF700)
Test plug socket	SDD/2 (cod. DD002) – PSD/B (cod. PD002)
Modular test plug	-
End section for modular test plug	-
Shielding bar	-
Marking	
Single marking tag	CNU/8/51 (cod. NU0851S) – CNU/10/61 (cod. NU1061S)
Single marking tag for pitch insertion	-
Warning plate	TUM/05 on 3 and on 4 (cod. TUM05)
End bracket	
TH35 screw type	BT/3 (cod. BT003)
TH35 snap-fit type	BTO (cod. BT007)
TH35 and G32 snap-fit type	BTU (cod. BT005)
Mounting rail	
IEC 60715/TH35	PR/3/...
IEC 60715/G32	PR/DIN/...
APPROVALS AND MARKINGS	
     	



DESCRIZIONE DEL PRODOTTO

CBD.16(Ex)
Screw terminal block 16mm2, 1-level, blue color, CBD series