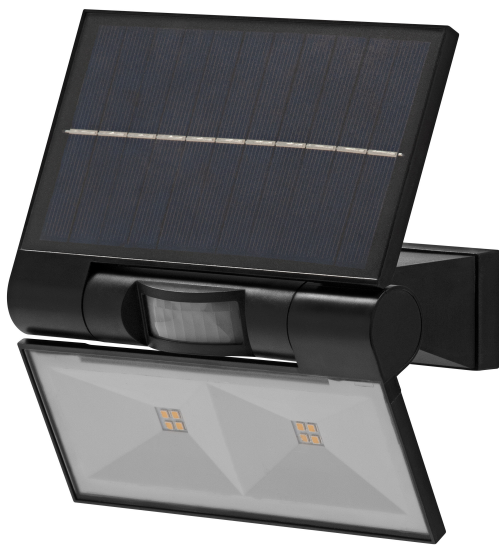


PRODUCT DATASHEET

ENDURA Flood Solar Double Sensor 2 W 3000 K

ENDURA STYLE SOLAR DOUBLE | Solar-powered flood luminaire with motion and light sensor



Areas of application

- Outdoor use (IP44)
- Replacement for floodlights with halogen lamps
- Garages
- Building facades

Product benefits

- Demand based lighting and energy saving thanks to motion and daylight sensor
- Easy adjustment of daylight and motion detection via push switch
- Energy-efficient thanks to LED technology
- Easy and quick installation
- Energy-saving alternative to luminaires that use halogen lamps

Product features

- Solar powered outdoor LED luminaire
- PIR motion detector and daylight sensor
- Battery charging via solar panel
- Battery technology: lithium-ion



TECHNICAL DATA

Electrical data

| | |
|------------------------|------------|
| Nominal wattage | 2,9 W |
| Nominal voltage | 3,7 V |
| Nominal current | 925.000 mA |
| Power factor λ | ≤ 0.5 |
| Protection class | III |
| Operating mode | Battery |

Photometrical data

| | |
|--|---------------------------|
| Luminous flux | 380 lm |
| Luminous efficacy | 131 lm/W |
| Color temperature | 3000 K |
| Light color (designation) | Warm White |
| Color rendering index Ra | ≥ 80 |
| Standard deviation of color matching | ≤ 6 sdc _m |
| Flickering metric (Pst LM) | ≤ 1 % |
| Stroboscope effect metric (SVM) | ≤ 0.4 |
| Photobiological safety group acc. to EN62778 | RG0 |
| Photobiological safety group acc. to EN62471 | RG0 |
| Beam angle | 110 ° |

Dimensions & Weight

| | |
|----------------|-----------|
| Length | 160.00 mm |
| Width | 110.00 mm |
| Height | 172.00 mm |
| Product weight | 354.00 g |

Materials & Colors

| | |
|---------------|-----------|
| Product color | Dark gray |
| Housing color | Dark gray |

| | |
|-----------------|--------------------|
| Body material | Plastic |
| Cover material | Polycarbonate (PC) |
| Mercury content | 0.0 mg |

Application & Mounting

| | |
|--|-----------------|
| Ambient temperature range | 0...+40 °C |
| Temperature range at storage | -20...+40 °C |
| Type of protection | IP44 |
| Protection class IK (shock resistance) | IK03 |
| Dimmable | Yes |
| Mounting type | Surface |
| Mounting location | Wall |
| Application environment | Outdoor |
| LED module replaceable | Not replaceable |
| With light source | Yes |

Lifespan

| | |
|----------------------------|-----------------------|
| Lifespan L70/B50 at 25 °C | 25000 h ¹⁾ |
| Number of switching cycles | 12500 |

¹⁾ t[h]: L70 / B50 @ 25 °C (Ta), t[h]: L80 / B10 @ 25 °C (Ta), t[h]: L90 / B10 @ 25 °C (Ta)

Sensor

| | |
|--|-------------|
| Type of sensor | Motion |
| Sensor detection angle | 100 ° |
| Sensor controlled switching time | 30 s |
| Detection range of motion sensor | 5...8 m |
| Detection threshold of daylight sensor | 10...100 lx |

BATTERY

| | |
|------------------------------|-------------|
| Type of Battery | Lithium ion |
| Battery size [GMS] | 18650 |
| Number of included batteries | 1 |
| Nominal voltage of battery | 3.7 V |
| Nominal capacity of battery | 2600 mAh |

Certificates & Standards

| | |
|-----------|-----------------|
| Standards | EMC / CE / UKCA |
|-----------|-----------------|

Luminaire with limited surface temperature, "D sign"

No

EQUIPMENT / ACCESSORIES

– Complete mounting and connecting accessories included

DOWNLOAD DATA

Documents and certificates



User instruction



Declarations Of Conformity CE



Declarations Of Conformity UKCA

LOGISTICAL DATA

| Product code | Packaging unit (Pieces/Unit) | Dimensions (length x width x height) | Gross weight | Volume |
|---------------|------------------------------|--------------------------------------|--------------|-----------------------|
| 4058075576636 | Folding box 1 | 118 mm x 98 mm x 168 mm | 403.00 g | 1.94 dm ³ |
| 4058075576643 | Shipping box 8 | 360 mm x 260 mm x 220 mm | 3790.00 g | 20.59 dm ³ |

The mentioned product code describes the smallest quantity unit which can be ordered. One shipping unit can contain one or more single products. When placing an order, for the quantity please enter single or multiples of a shipping unit.

DISCLAIMER

Subject to change without notice. Errors and omission excepted. Always make sure to use the most recent release.