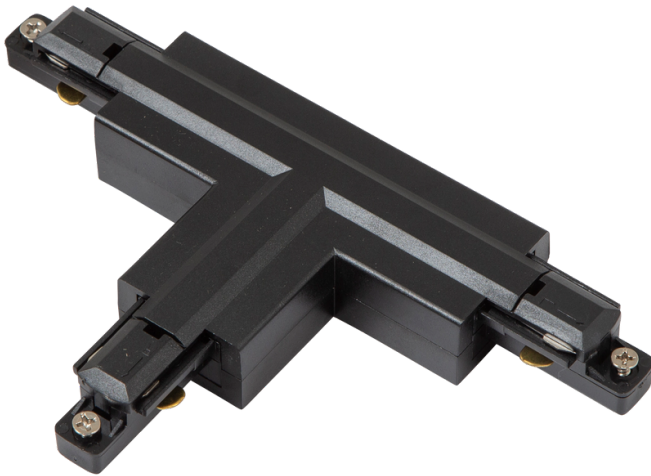




APRT/P1/TC/L1/1/B

Primo Single Circuit T Connector Left Earth Inside Black



Primo Single Circuit Track and Accessories

Option of left and right feed for Live end, L and T connectors

Technical Specifications:

Colour / Finish | [Black]

Track Components | Accessories

Internal / External | Internal

Warranty (Years) | 5

CE Mark | Yes

UKCA Mark | Yes

Length | 203

Height | 20

Depth | 229

Technical Data - ETIM - Light-track (EC000101)

Nominal voltage	220-240 V
Suitable for suspended mounting	Yes
Number of groups/phases	1
Suitable for bus connection	No
Material	Aluminium
Surface finishing	Matt
Colour	Black
Surface-mounted	Yes
Built-in	No
Bendable	No
Protection class	I

Datasheet generated from <https://onetimepim.com> last updated Friday, February 16, 2024 4:45:58 PM

