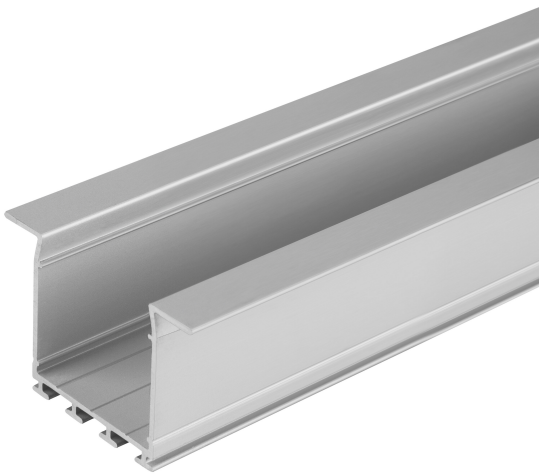


# PRODUCT DATASHEET

## LS AY -PW02/UW/39X26/14/2

LED STRIP PERFORMANCE-1000 RGBW PROTECTED | High performance IP66 protected RGBW LED strips with 1000 lm/m for high requirements



---

### Areas of application

- General indoor illumination

---

### Product benefits

- Robust aluminum profile
- Quick and simple installation

## TECHNICAL DATA

### Dimensions & Weight

Length	2000 mm
Width	39.0 mm
Height	26.0 mm
Product weight	520.00 g

### Colors & materials

Product color	Grey
---------------	------

### Temperatures & operating conditions

Ambient temperature range	-15...+45 °C
Temperature range in operation	-15...+45 °C

### Additional product data

Product remark	Can be combined with all LEDVANCE LED Strips including connectors and endcap
----------------	------------------------------------------------------------------------------

## LOGISTICAL DATA

Temperature range at storage	-35...+85 °C
------------------------------	--------------

## LOGISTICAL DATA

Product code	Packaging unit (Pieces/Unit)	Dimensions (length x width x height)	Gross weight	Volume
4058075401471	BAG 1	2,000 mm x 40 mm x 26 mm	521.00 g	2.08 dm <sup>3</sup>
4058075401488	Bundle 5	2,000 mm x 40 mm x 130 mm	2606.00 g	10.40 dm <sup>3</sup>
4058075401495	Shipping box 25	2,040 mm x 210 mm x 160 mm	14404.00 g	68.54 dm <sup>3</sup>

The mentioned product code describes the smallest quantity unit which can be ordered. One shipping unit can contain one or more single products. When placing an order, for the quantity please enter single or multiples of a shipping unit.

## DISCLAIMER

Subject to change without notice. Errors and omission excepted. Always make sure to use the most recent release.