



CorePro LED PLS

CorePro LED PLS 5W 840 2P G23

The Philips CorePro LED PLS integrates a LED light source into a traditional fluorescent form factor. This product is the ideal solution for uplamping in general lighting applications: it meets basic lighting requirements, offers significant energy savings, and is environment-friendly.

Product data

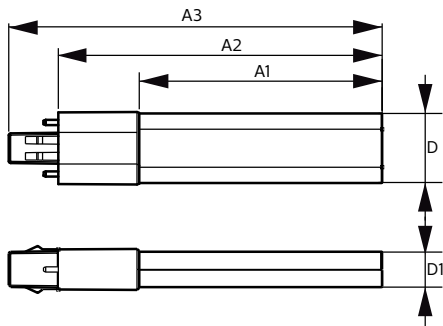
General Information		Temperature	
Cap-Base	G23 [G23]	Warm-up time to 60% light	0.5 s
Nominal lifetime	30,000 hour(s)	Power Factor (Fraction)	0.9
Switching Cycle	50,000	Voltage (Nom)	220-240 V
Lighting Technology	LED	Temperature	
Flux measurement reference	Sphere	Ambient temperature range	-20 °C to 45 °C
		T-Case Maximum (Nom)	83 °C
Light Technical		Controls and Dimming	
Color Code	840 [CCT of 4000K]	Dimmable	No
Beam Angle (Nom)	120 degree(s)	Mechanical and Housing	
Luminous Flux	550 lumen	Bulb Material	Plastic
Color Designation	Cool White (CW)	Product Length	170 mm
Correlated Color Temperature (Nom)	4000 K	Bulb Shape	Tube, single-ended
Luminous Efficacy (rated) (Nom)	110.00 lm/W	Approval and Application	
Color Consistency	<6	Energy Saving Product	Yes
Color rendering index (CRI)	82	Approval Marks	TUV CE marking RoHS compliance KEMA Keur certificate
LLMF At End Of Nominal Lifetime (Nom)	70 %	Energy Consumption kWh/1000 h	5 kWh
Operating and Electrical		EPREL Registration Number	403,567
Line Frequency	50 to 60 Hz	CE mark	Yes
Input Frequency	50 to 60 Hz		
Power Consumption	5 W		
Starting Time (Nom)	0.5 s		

CorePro LED PLS

EU RoHS compliant	Yes
Product Data	
Full product code	871869959668200
Order product name	CorePro LED PLS 5W 840 2P G23
Order code	929001926402
Numerator - Quantity Per Pack	1

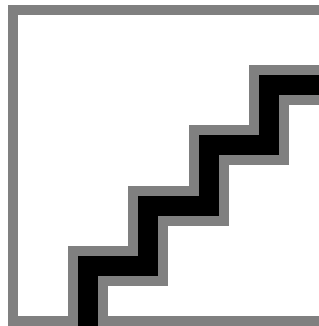
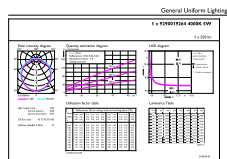
Numerator - Packs per outer box	20
Material number (12NC)	929001926402
Full product name	CorePro LED PLS 5W 840 2P G23
EAN/UPC - Case	8718699596699

Dimensional drawing

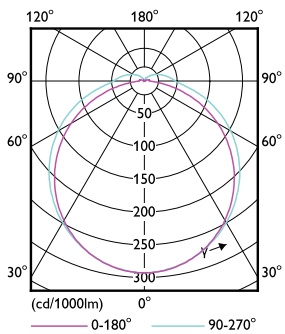


Product	D	D1	A1	A2	A3
CorePro LED PLS 5W 840 2P G23	31.1 mm	15.8 mm	108 mm	144 mm	166 mm

Photometric data



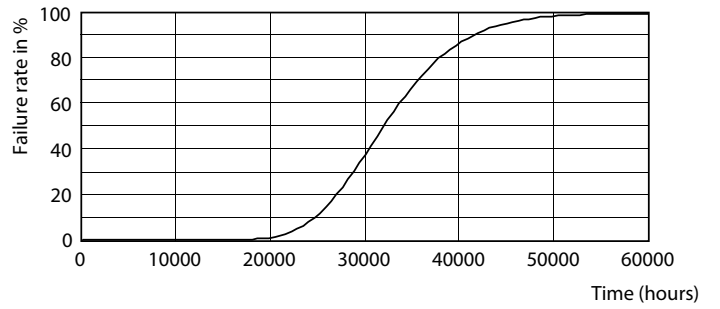
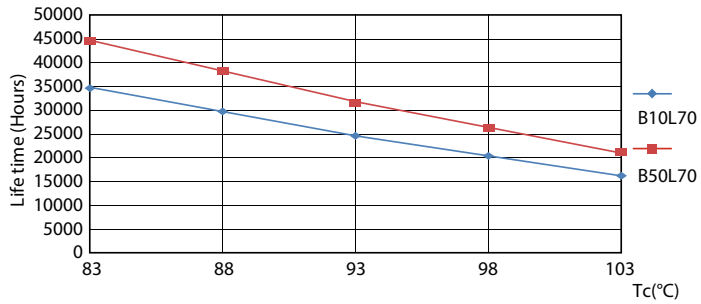
Spectral Power Distribution Colour - CorePro LED PLS 5W 840 2P G23



Light Distribution Diagram - CorePro LED PLS 5W 840 2P G23

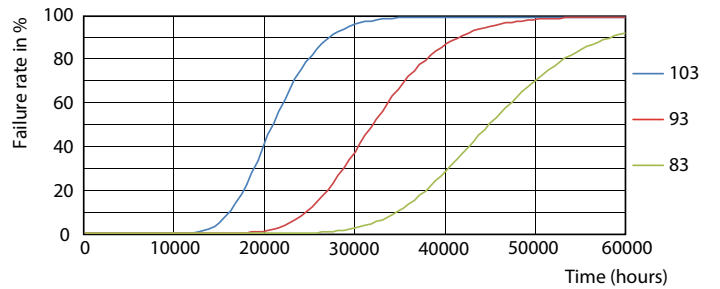
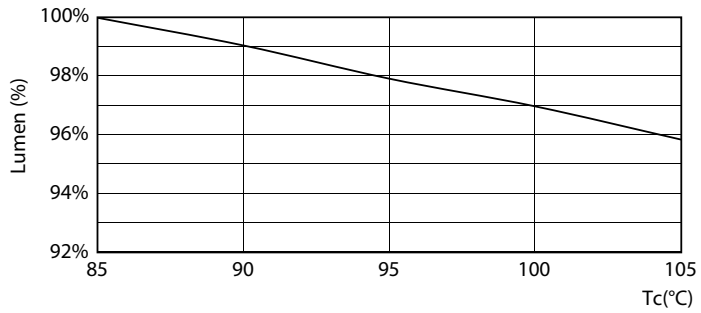
CorePro LED PLS

Lifetime



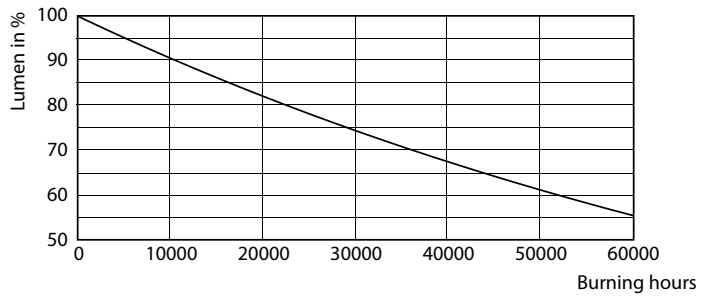
Life Expectancy Diagram - CorePro LED PLS 5W 840 2P G23

Life Expectancy Diagram - CorePro LED PLS 5W 840 2P G23



Lumen Maintenance Diagram - CorePro LED PLS 5W 840 2P G23

Life Expectancy Diagram - CorePro LED PLS 5W 840 2P G23



Lumen Maintenance Diagram - CorePro LED PLS 5W 840 2P G23

CorePro LED PLS

