

## LED Bollard Luke

| Item Code    | CCT   | kg     |  |  |
|--------------|-------|--------|--|--|
| 703000003100 | 3000K | 1.72Kg |  |  |
| 703000003200 | 4000K | 1.72Kg |  |  |
| 703000003300 | 3000K | 2.62Kg |  |  |
| 703000003400 | 4000K | 2.62Kg |  |  |

|  | Model Name                        | L (mm) | W (mm) | H (mm) | Rated Voltage (V~) | Frequency (Hz) | Current (A) | Power Factor | Rated Power(W) |
|--|-----------------------------------|--------|--------|--------|--------------------|----------------|-------------|--------------|----------------|
|  | LEDBollard-Luke-E L500-8W-830-BL  | 208    | 140    | 500    | 220-240            | 50/60          | 0.05        | 0.8          | 8              |
|  | LEDBollard-Luke-E L500-8W-840-BL  |        |        |        |                    |                |             |              |                |
|  | LEDBollard-Luke-E L1000-8W-830-BL | 208    | 140    | 1000   | 220-240            | 50/60          | 0.05        | 0.8          | 8              |
|  | LEDBollard-Luke-E L1000-8W-840-BL |        |        |        |                    |                |             |              |                |

### Light Source

| Product Code | Product Description               | N | Light source code | QR Code | Energy Label |
|--------------|-----------------------------------|---|-------------------|---------|--------------|
| 703000003100 | LEDBollard-Luke-E L500-8W-830-BL  | 1 | LS059000812       |         |              |
| 703000003300 | LEDBollard-Luke-E L1000-8W-830-BL |   |                   |         |              |
| 703000003200 | LEDBollard-Luke-E L500-8W-840-BL  | 1 | LS059000815       |         |              |
| 703000003400 | LEDBollard-Luke-E L1000-8W-840-BL |   |                   |         |              |

\* This product contains a light source of energy efficiency class (D).

### Pre-Installation

height: 200mm

d: dimension of luminaire bottom

D: Pre-installed base size (D=d+100mm)

Φ7mm

108mm

133mm

53mm

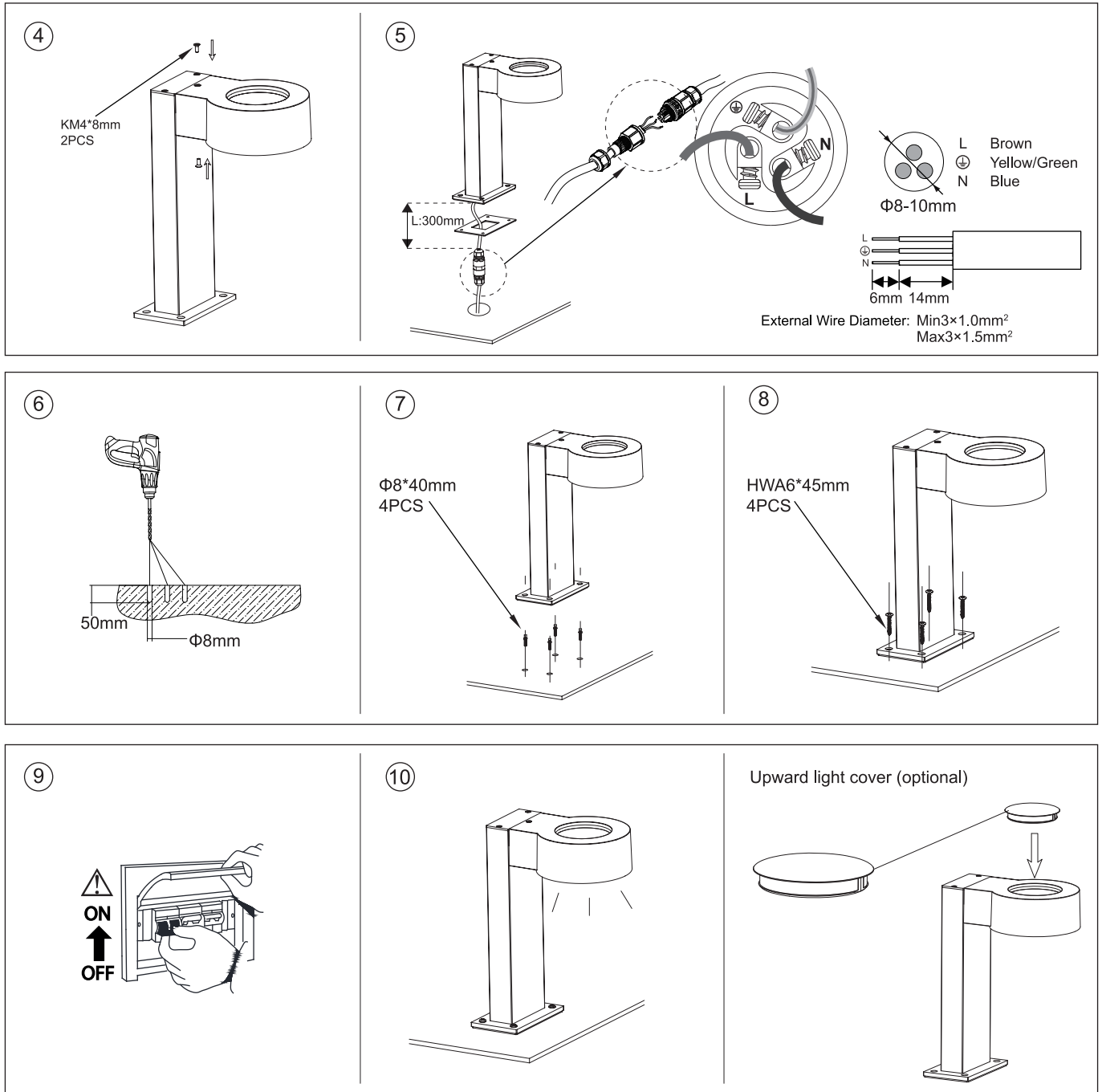
78mm

\*Notes: The installation surface should have enough structural strength to sustain the load and weight of this luminaire.

### Installation

- 
- HWA6\*45mm 4PCS
  - Φ8\*40mm 4PCS
  - KM4\*8mm 2PCS
  - L133\*W78\*T2.0mm 1PC
-

## Installation



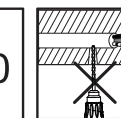
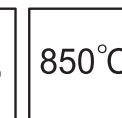
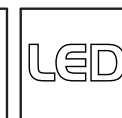
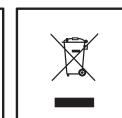
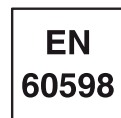
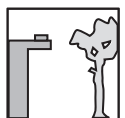
For type Z attachments: the external flexible cable or cord of this luminaire cannot be replaced; if the cord is damaged, the luminaire shall be destroyed.



Caution: Any operation on LED module is forbidden while power on.  
Zur Vermeidung von Risiken müssen defekte Leitungen ausschließlich vom Hersteller, Inverkehrbringer oder Fachmann ausgetauscht werden.  
Achtung: In Betrieb ist keine Arbeit am LED-Modul erlaubt.



For non-replacable light sources:  
The light source of this luminaire is not replaceable;  
When the light source reaches its end of life the whole luminaire shall be replaced.  
Das Leuchtmittel dieser Leuchte ist nicht austauschbar. Wenn das Leuchtmittel das Ende seiner Lebensdauer erreicht hat, muss die gesamte Leuchte ersetzt werden.



Data subject to change  
Les données sont sujettes à modifications  
Änderungen vorbehalten

Opplé Lighting Electronic (Zhongshan) Co., Ltd.  
Building A, No.275 Dongan Bei Road, Haizhou District,  
Guzhen Town, Zhongshan City, Guangdong, China.

OPPLE Lighting B.V.  
Meerenakkerweg 1.11  
5652 AR Eindhoven  
The Netherlands  
service@opple.com  
www.opple.com