



MASTER LEDtube Mains T5



MAS LEDtube 600mm HO 10.5W 865 T5

The new Philips Master LEDtube Mains T5 brings simplicity to your lighting project. You don't need to pay attention to the driver technology anymore. Thanks to a unique design, Philips MASTER LEDtube Mains T5 installs in luminaires operating on mains power connection. So simple to operate! . Perfectly safe, reliable & easy to install Philips MASTER LEDtube Mains T5 is the ideal alternative to standard fluorescent tubes to maximize value over lifetime with high energy saving and lower maintenance costs.

Product data

General Information		Photobiological safety according to EN 62471	
Cap-Base	G5	RG0	
Nominal lifetime	50,000 hour(s)	Operating and Electrical	
Switching Cycle	200,000	Input Frequency	50 to 60 Hz
Lighting Technology	LED	Power Consumption	10.5 W
Flux measurement reference	Sphere	Lamp Current (Max)	47 mA
Light Technical		Lamp Current (Min)	47 mA
Color Code	865 [CCT of 6500K]	Lamp Current (Nom)	47 mA
Beam Angle (Nom)	200 degree(s)	Starting Time (Nom)	0.5 s
Luminous Flux	1,600 lm	Warm-up time to 60% light	0.5 s
Color Designation	Cool Daylight	Power Factor (Fraction)	0.92
Correlated Color Temperature (Nom)	6500 K	Voltage (Nom)	220-240 V
Luminous Efficacy (rated) (Nom)	152 lm/W	Ballast Compatibility	Mains
Color Consistency	<6	LED alternative to fluorescent lamp power	24 W
Color rendering index (CRI)	80	Inrush current at mains	7
LLMF At End Of Nominal Lifetime (Nom)	70 %	Max. lamp no. on MCB B type 10A - Mains	100
		Max. lamp no. on MCB B type 10A – EM ballast without Compensation Capacitor.	-

MASTER LEDtube Mains T5

Max. lamp no. on MCB B type 10A – EM ballast with Compensation Capacitor.	-
Max. lamp no. on MCB B type 16A – Mains	159
Max. lamp no. on MCB B type 16A – EM ballast without Compensation Capacitor.	-
Max. lamp no. on MCB B type 16A – EM ballast with Compensation Capacitor.	-

Temperature

T-Case Maximum (Nom)	60 °C
----------------------	-------

Controls and Dimming

Dimmable	No
----------	----

Mechanical and Housing

Bulb Finish	Frosted
Bulb Material	Glass
Product Length	600 mm
Bulb Shape	T5
Net Weight (Piece)	0.080 kg

Approval and Application

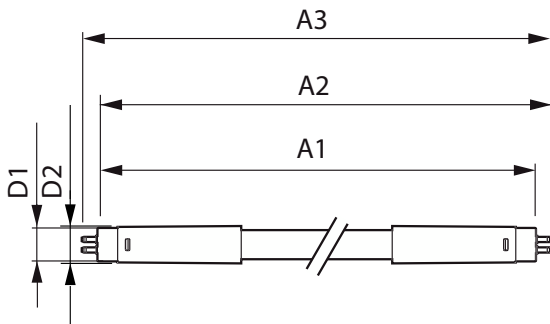
Energy Efficiency Class	D
Energy Saving Product	Yes

Approval Marks	RoHS compliance
Energy Consumption kWh/1000 h	11 kWh
EPREL Registration Number	1590873
CE mark	Yes
EU RoHS compliant	Yes
Flickering value (PstLM) – Flickering value as per EN 61000-3-3	1
Stroboscopic effect visibility measure (SVM)	0.4
Ambient temperature range	-20 to +45 °C

Product Data

Order product name	MAS LEDtube 600mm HO 10.5W 865 T5
Full product name	MAS LEDtube 600mm HO 10.5W 865 T5
Full product code	872016927523200
Order code	929003734502
Material Nr. (12NC)	929003734502
Numerator - Quantity Per Pack	1
EAN/UPC - Product/Case	8720169275232
Numerator - Packs per outer box	10
EAN/UPC - Case	8720169275249

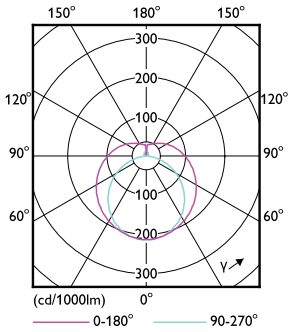
Dimensional drawing



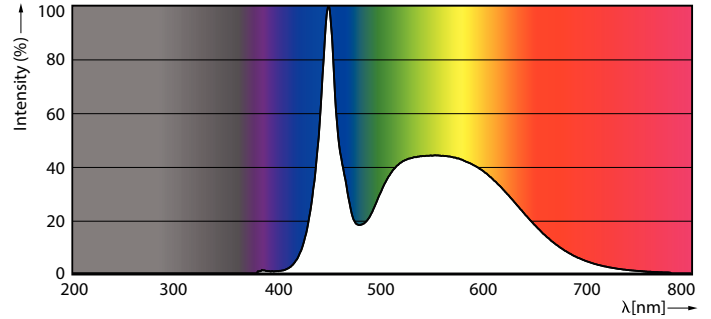
Product	D1	D2	A1	A2	A3
MAS LEDtube 600mm HO 10.5W 865 T5	19 mm	549 mm	556.1 mm	563.2 mm	

MASTER LEDtube Mains T5

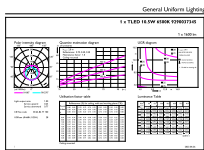
Photometric data



Light Distribution Diagram - MAS LEDtube 600mm HO 10.5W 865 T5



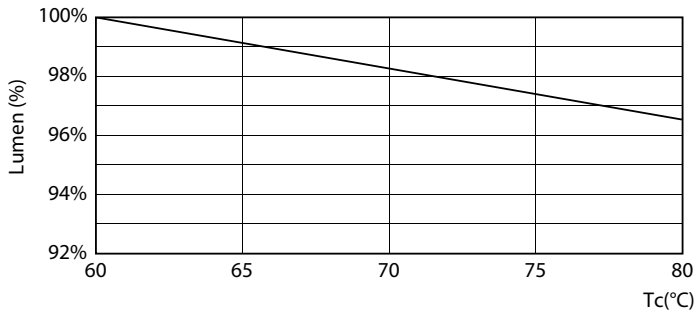
Spectral Power Distribution Colour - MAS LEDtube 600mm HO 10.5W 865 T5



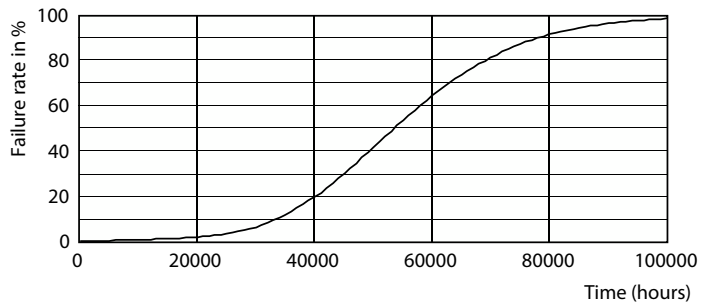
General Uniform Lighting - MAS LEDtube 600mm HO 10.5W 865 T5

General uniform lighting - MAS LEDtube 600mm HO 10.5W 865 T5

Lifetime



Lumen Maintenance Diagram - MAS LEDtube 600mm HO 10.5W 865 T5



Life Expectancy Diagram

MASTER LEDtube Mains T5

Lifetime



LifetimeVsTc

FailureRate



Lumen Maintenance Diagram - MAS LEDtube 600mm HO 10.5W 865 T5

