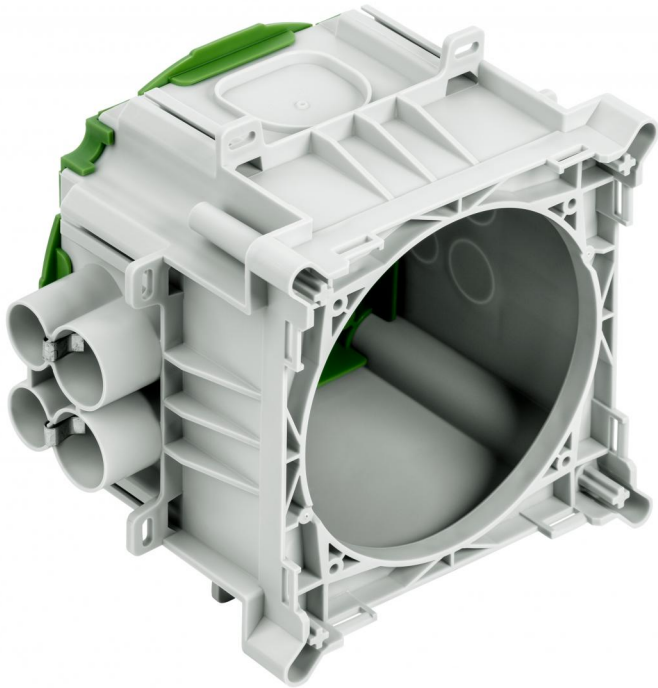


Installation housing

IBTLED 1-0



IBTLED 1-0

Installation housing

Productnumber: 98210101

Dimensions: 177 x 200 x 125 mm

Installation housing, for prefabricated construction, halogen-free, for the installation of LV/HV/LED lights and speakers, announcement and call systems, for the installation of VDE-tested lights to DIN EN 60598 (VDE 0711), and with F or MM marking, with protection class IP30, Rated insulation voltage: 400V AC, Halogen free

maximum installation depth 100 mm, additional insertions 2 x to M40, adhesive fixing or nail installation, combination conduit insertion and membrane for perforation, Sealing area M16 - M40



Technical Data

electrical characteristics

Rated insulation voltage AC:	400 V
Type of protection:	IP30
Suitable for:	Concrete construction

Colours

Base unit colour:	grey
Cover colour:	green

Dimensions

Width:	177 mm
Length:	200 mm
Height:	125 mm
Inner length:	100 mm
Inner width:	100 mm
Inner height:	115 mm

Material characteristics

Industry quality:	no
Halogen free:	yes
Flammability class according with UL94:	HB
Glow-wire flammability according to EN 60695-2-11:	650 °C

mechanical properties

Type of fastening:	adhesive fixing or nail installation
--------------------	--------------------------------------

Ambient conditions

max. relative humidity 25°C:	- %
max. relative humidity 40°C:	50 %
Min. ambient temperature:	-25 °C

Ambient conditions

Max. ambient temperature:	60 °C
24h ambient temperature:	35 °C

Material

Base unit material:	Polypropylene
Cover material:	Polypropylene

Accessories

[98207501 - FT75R - Front part](#)

[98206801 - FT68R - Front part](#)

[98211001 - FTF1 - Front part](#)