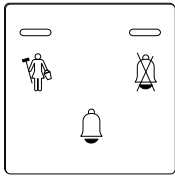


Bell push-button with LED display

Operating instructions



System M



Bell push-button with LED displays
Art. no. MTN5876..

For your safety



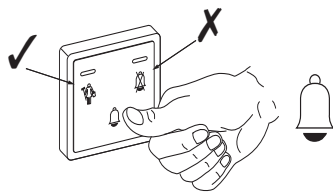
DANGER

Risk of fatal injury from electrical current.

All work carried out on the unit may only be performed by skilled electricians. Observe the regulations valid in the country of use.

Getting to know the push-button

You can use the bell push-button (referred to below as the **push-button**) to indicate whether the room can be entered or should remain undisturbed. The green LED stands for "Please clean the room" and the red LED stands for "Please do not disturb". You can also use the doorbell button to ring when the bell function is not locked.

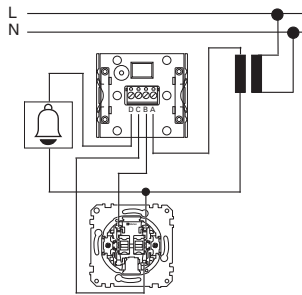


How to install the push-button

Please use single-core cables with a diameter of 0.8 mm or greater.

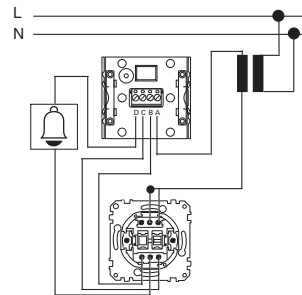
① Wire the push-button for the desired application:

– Ringing the bell is always possible:



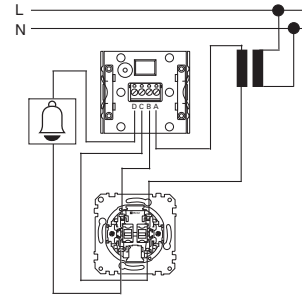
Roller shutter rocker switch insert (art. no. MTN311501) with rocker (art. no. MTN4356xx) in the hotel room. Only one LED lights up on the doorbell button.

– Ringing the bell is not possible when the "Please do not disturb" LED lights up red.



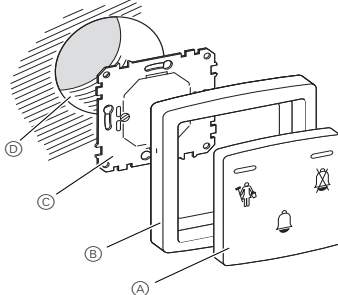
Switch insert (art. no. MTN311601) with rocker (art. no. MTN4356xx) in the hotel room. Both LEDs on the doorbell button can light up simultaneously.

– Ringing the bell is not possible when the "Please do not disturb" LED lights up red.



Switch insert (art. no. MTN311502) with rocker (art. no. MTN4356xx) in the hotel room. The red and green LEDs are mechanically interlocked by the switch insert.

② Installing the bell button with frame and supporting plate in the flush mounting box.



- Ⓐ Bell push-button
- Ⓑ Frame
- Ⓒ Supporting plate
- Ⓓ Flush mounting box

Technical data

Input voltage:	min. AC 6 V, max. AC 24 V (SELV)
Min. current:	10 mA (with voltages of > 15 V)
Max. continuous current:	500 mA
Peak current(< 10s):	1 A
Short-circuit-proof:	electronic fuse
Over-voltage protection:	> AC 30 V

Schneider Electric Industries SAS

If you have technical questions, please contact the Customer Care Center in your country.

www.schneider-electric.com

This product must be installed, connected and used in compliance with prevailing standards and/or installation regulations. As standards, specifications and designs develop from time to time, always ask for confirmation of the information given in this publication.