

# Square shape fiber sensor heads

## E32-ETS14R-1

### Through-Beam Fiber Unit

- Square shaped housing, 4 mm thick side-view housing
- High-flex fiber with bending radius 1 mm
- Fast and easy installation on flat surfaces
- Modified E32-ETS14R with M3 thread instead of 2.1 mm holes



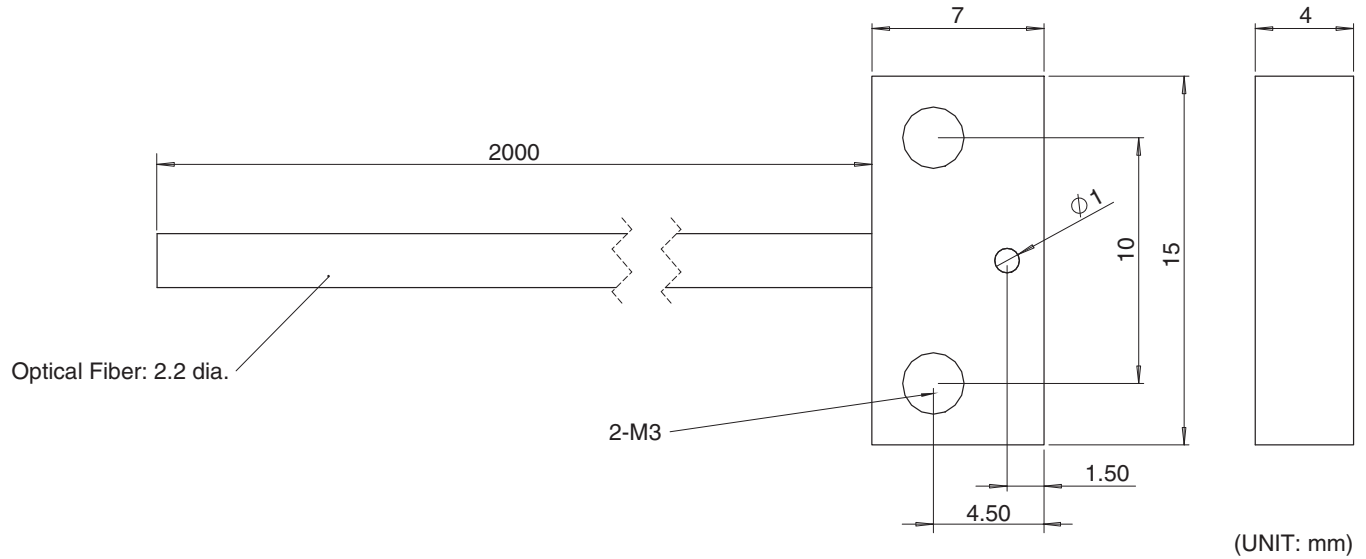
### Ordering information

Size	Shape	Fiber	Order code
15 × 7 × 4 mm	Through-beam	High-flex fibers, 2,2 dia	E32-ETS14R-1 2M

### Specifications

Use with	E3X Fiber Amplifier family	
Temperature range	-20°C ... +60°C	
Sensing distance (mm)	ST = 480/SHS = 180/HR = 360	
Fiber length	2 m	
Free cut	Yes	
Permissible Bending radius	R1	
Material	Head	Aluminum
	Fiber	PMMA
	Sheath	Polyethylene coating

### Dimensions



# Safety Precautions

## Precautions for Safe Use



This product is not designed or rated for ensuring safety of persons either directly or indirectly. Do not use it for such purposes.

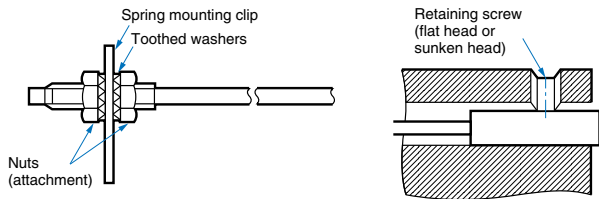
## Precautions for Correct Use

Do not use the product in atmospheres or environments that exceed product ratings.

### Installation

#### Tightening Force

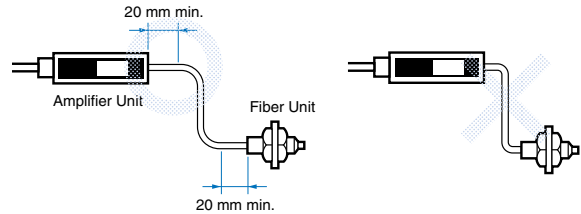
The tightening force applied to the Fiber Unit should be as follows:



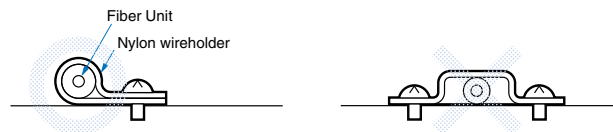
Clamping torque: 0.98 Nm max.

#### Connection

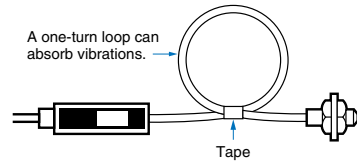
- Do not strain the fiber unit, e.g. do not apply tensile or compression force (within 9.8 Nm or 29.4 Nm). Use special care since the fiber is thin.
- The bending radius of the fiber unit should exceed the admissible bending radius given under Specifications



- Do not apply excess force on the fiber units.



- The fiber head could be break from excessive vibration. To prevent this, the following is applied:



## <SUITABILITY FOR USE>

OMRON shall not be responsible for conformity with any standards, codes, or regulations that apply to the combination of the products in the customer's application or use of the products. Take all necessary steps to determine the suitability of the product for the systems, machines, and equipment with which it will be used.

## <CHANGE IN SPECIFICATIONS>

Product specifications and accessories may be changed at any time based on improvements and other reasons. Consult with your OMRON representative at any time to confirm actual specifications of purchased product.

**OMRON Corporation** Industrial Automation Company  
Kyoto, JAPAN

Contact: [www.ia.omron.com](http://www.ia.omron.com)

**Regional Headquarters**  
**OMRON EUROPE B.V.**  
Wegalaan 67-69, 2132 JD Hoofddorp  
The Netherlands  
Tel: (31)2356-81-300/Fax: (31)2356-81-388

**OMRON ELECTRONICS LLC**  
2895 Greenspoint Parkway, Suite 200  
Hoffman Estates, IL 60169 U.S.A.  
Tel: (1) 847-843-7900/Fax: (1) 847-843-7787

**OMRON ASIA PACIFIC PTE. LTD.**  
No. 438A Alexandra Road # 05-05/08 (Lobby 2),  
Alexandra Technopark,  
Singapore 119967  
Tel: (65) 6835-3011/Fax: (65) 6835-2711

**OMRON (CHINA) CO., LTD.**  
Room 2211, Bank of China Tower,  
200 Yin Cheng Zhong Road,  
PuDong New Area, Shanghai, 200120, China  
Tel: (86) 21-5037-2222/Fax: (86) 21-5037-2200

Authorized Distributor:

© OMRON Corporation 2017 All Rights Reserved.  
In the interest of product improvement,  
specifications are subject to change without notice.

Cat. No. E108E-EN-01

0717 (0717)