

NEOZED D0 fuse-links aM 400/440VAC

LOW VOLTAGE IEC FUSES

DIN LV FUSE-LINKS D0



The D0 fuse-system is installed in motor circuit protection, where fuse-links are accessible to non trained persons and can also be replaced by them.

The system is the most modern of the screw systems and designed for 400VAC/440VAC networks.

Type "aM" fuse-links are partial-range breaking capacity fuse-links, used to protect motor circuits as they are strongly current-limiting and have low power losses.

They limit and cut off short circuit currents from 6.3 times I_n up to their nominal breaking capacity.

TECHNICAL DATA OVERVIEW

Voltage Range AC	400 ... 440 VAC
Ampere Range (A)	20 ... 35 A
Speed/Characteristic	aM
I.R. AC (IEC)	50 kA
Product Size	D02

FEATURES & BENEFITS

- Insulated body suitable for high mechanical and thermal impacts
- Top and bottom contacts made of nickel plated or silver plated copper alloy
- Safe cut-off short circuits due to special design of fuse element
- Clear indication of operation condition due to coloured indicator on top contact
- Low power dissipation
- Optimized size
- Resistant to aging

APPLICATIONS

- Motor circuit protection

STANDARDS

- DIN VDE 0636-3



NEOZED D0 fuse-links aM 400/440VAC

PRODUCT RANGE

Size D02 (E18) aM



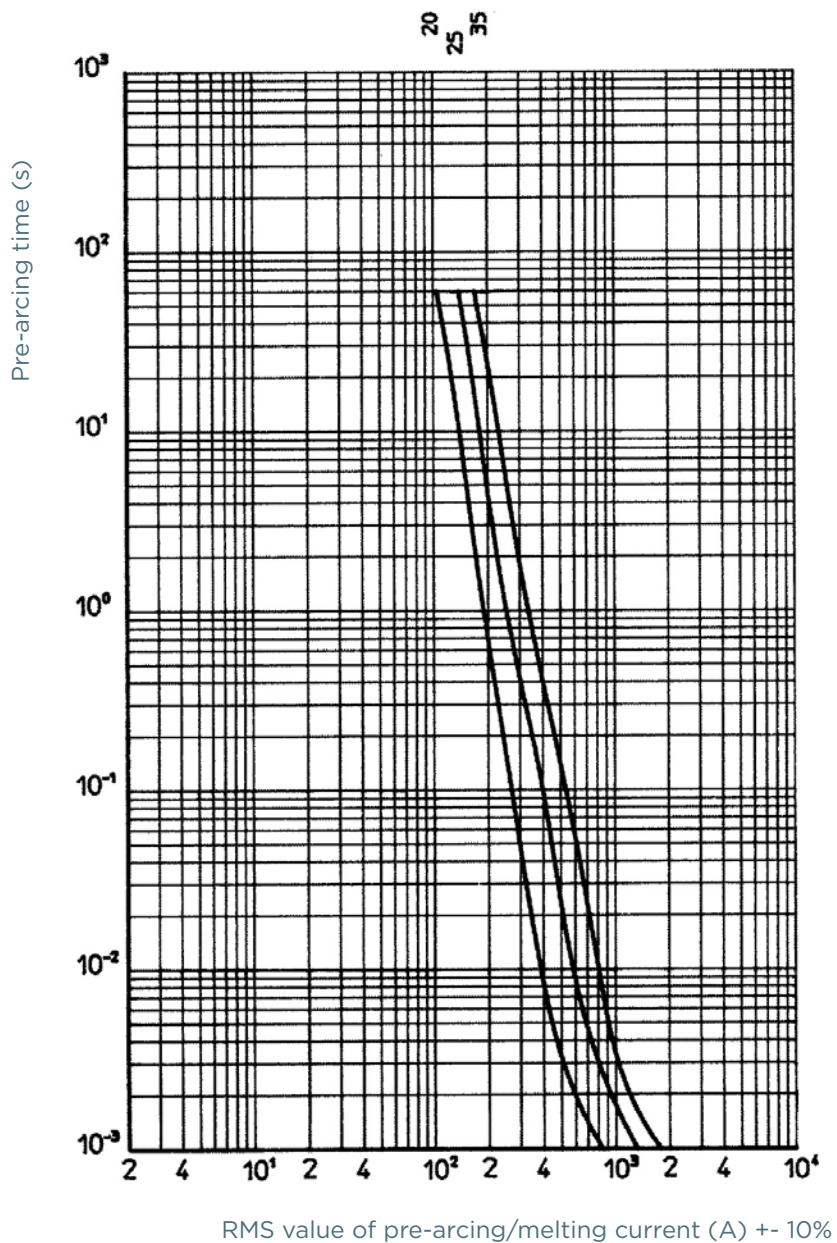
D02AM44V25

Catalog number	Item number	Rated voltage AC (IEC)	Rated current I _n	Colour	Power dissipation at I _n	Utilisation category	Package	Weight
D02AM44V20	H211607	440 V	20 A	blue	2.5 W	aM	10	13.2 g
D02AM44V25	F212640	440 V	25 A	yellow	3 W	aM	10	13.2 g
D02AM44V35	J213655	440 V	35 A	black	4 W	aM	10	13.2 g

NEOZED D0 fuse-links aM 400/440VAC

TIME CURRENT CHARACTERISTIC CURVES

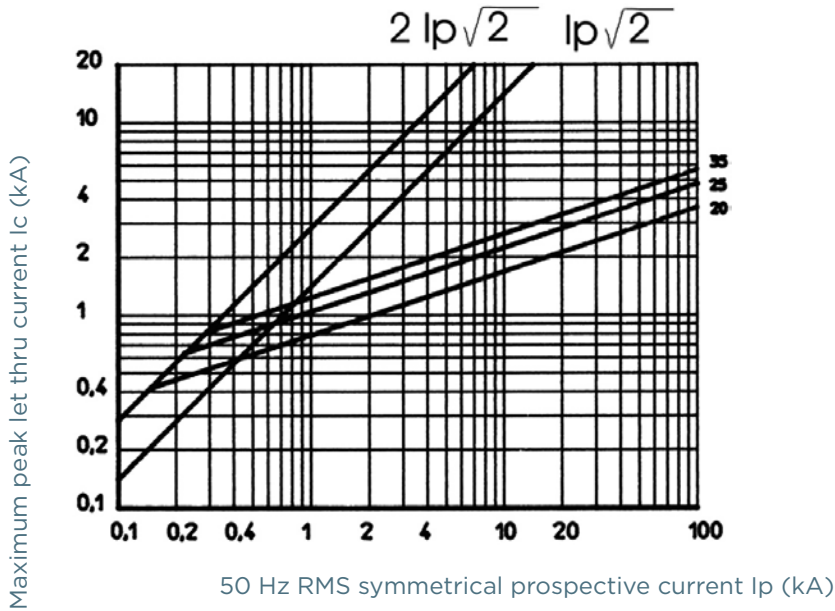
NEOZED D0 fuse-links aM 400/440VAC



NEOZED D0 fuse-links aM 400/440VAC

CUT-OFF CURRENT CHARACTERISTIC

NEOZED D0 fuse-links aM 400/440VAC



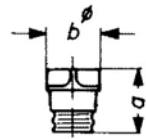
DIMENSIONS

NEOZED Fuse-Links

Size	a	b
D02	36 mm	15 mm

Dimensions in mm

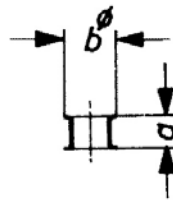
NEOZED Screw Caps



Article Number	a	b
01714.000000	29,5	23
01715.000000	29,5	23
01710.000000	31	25
01711.000000	31	25
01712.000000	37	40

Dimensions in mm

NEOZED Adapter Inserts



Article Number	a	b
01705.000000	10	12
01706.000000	10	16
01707.000000	10	27

Dimensions in mm

NEOZED D0 fuse-links aM 400/440VAC

ACCESSORIES



01711.000200



01770.000200



01714.000201



01715.000201

Screw caps

Catalog number	Item number	Features	Package	Weight
D0 screw caps 400/440 VAC, 250 V DC porcelain, with removal grips				
01711.000200	T215044	D02, E18, 63A, with testing hole	20	18.5 g
01712.000200	V215045	D03, M30x2, 100A, with testing hole	10	84 g
01770.000200	F1033740	D01, E14, 16A, with testing hole	20	16.4 g
D0 Screw caps, plastic-design, with testing hole				
01714.000201	C1204926	D01, E14, 16A, with testing hole	20	11 g
01715.000201	D1204927	D02, E18, 63A, with testing hole	20	11 g



01706.020000

D0 cartridge ring adapter inserts D02 E18

Catalog number	Item number	Application	Features	Package	Weight
D0 cartridge ring adapter inserts D02 (E18)					
01706.020000	S200668	For D02 fuse links	20A, blue	50	0.5 g
01706.025000	R213524	For D02 fuse links	25A, yellow	50	0.6 g
01706.035000	J216070	For D02 fuse links	35A, black	50	0.5 g



01715.810000

Locking devices

Catalog number	Item number	Features	Design	Package	Weight
01715.800000	R214582	Locking cap for D02 E18 fuse-bases for authorized personal only (EVU)	-	5	14 g
01715.810000	Y215094	Locking cap for D02 E18 fuse-bases	-	5	13.7 g

Adapter inserts

Catalog number	Item number	Features	Package	Weight
01709.000000	P214028	Adapter for Size D02 fuse-links in Size D03 bases	25	1.3 g