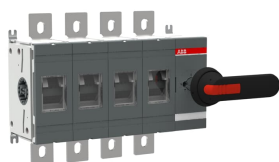


PRODUCT-DETAILS

# OT630E40P

## OT630E40P SWITCH-DISCONNECTOR



### General Information

Extended Product Type	OT630E40P
Product ID	1SCA022753R4610
EAN	6417019245065
Catalog Description	OT630E40P SWITCH-DISCONNECTOR
Long Description	4-pole, front operated, base mounted switch-diconnector with black IP65 handle and shaft, terminal bolt kit included

### Circular Value

Conflict Minerals Reporting Template (CMRT)	9AKK108467A5658
Environmental Information	1SCC301232D0201
REACH Declaration	1SCC011021D0201
RoHS Information	1SCC011020D0201

### Ordering

Minimum Order Quantity	1 piece
Customs Tariff Number	85365080

Country of Origin	Finland (FI)
-------------------	--------------

## Popular Downloads

Data Sheet, Technical Information	1SCC301020C0201
Instructions and Manuals	1SCC301042M0211
Mechanical Drawings	1SCC301316F0001 1SCC301315F0001 OT600_800E40.igs

## Dimensions

Product Net Width	331 mm
Product Net Height	250 mm
Product Net Depth / Length	140 mm
Product Net Weight	8 kg

## Technical

Rated Operational Current AC-21A ( $I_e$ )	(380 ... 415 V) 630 A (500 V) 630 A (690 V) 630 A (1000 V) 630 A
Rated Operational Current AC-22A ( $I_e$ )	(380 ... 415 V) 630 A (500 V) 630 A (690 V) 630 A
Rated Operational Current AC-23A ( $I_e$ )	(380 ... 415 V) 630 A (500 V) 630 A (690 V) 630 A
Rated Operational Power AC-23A ( $P_e$ )	(220 ... 240 V) 200 kW (400 ... 415 V) 355 kW (500 V) 400 kW (690 V) 630 kW
Conventional Free-air Thermal Current ( $I_{th}$ )	$\Theta = 40$ °C 630 A
Conventional Thermal Current ( $I_{the}$ )	Fully Enclosed 630 A
Rated Impulse Withstand Voltage ( $U_{imp}$ )	12 kV
Rated Insulation Voltage ( $U_i$ )	acc. to IEC/EN 60664-1 1000 V
Rated Operational Voltage	Main Circuit 1000 V
Rated Short-Circuit Making Capacity ( $I_{cm}$ )	(690 V) 80 kA
Rated Short-time Withstand Current Low Voltage ( $I_{cw}$ )	for 1 s 20 kA
Power Loss	at Rated Operating Conditions per Pole 25 W
Pollution Degree	3
Handle Color	Black

Handle Type	Handle and shaft included
Fourth Pole Position	Right Side
Fourth Pole Type	Switched - Simultaneous Function
Switches Operating Mechanism	Mechanism at the End of the Switch 40 (Right Side)
Distance Between Phases	Standard
Position of Line Terminals	Top In - Bottom Out Bottom In - Top Out
Operating Mode	Front operated
Standards	IEC 60947-3
Special Functions	No
Mounting Type	Base mounting
Number of Poles	4
Degree of Protection	Front IP00
Terminal Type	Lug terminals
Tightening Torque	acc. IEC 60947-1 50 ... 75 N·m
Mechanical Durability	10000
Lock Type	Yes

---

## Technical UL/CSA

---

Tightening Torque	acc. IEC 60947-1 50 ... 75 N·m
-------------------	--------------------------------

---



---

## Environmental

---

RoHS Status	Following EU Directive 2011/65/EU and Amendment 2015/863 July 22, 2019
Environmental Information	1SCC301232D0201

---



---

## Certificates and Declarations

---

Declaration of Conformity - CE	1SCC301140D2704
DNV GL Certificate	1SCC301184D0203
REACH Declaration	1SCC011021D0201

---



---

## Container Information

---

Package Level 1 Units	box 1 piece
Package Level 1 Width	260 mm
Package Level 1 Depth / Length	335 mm
Package Level 1 Height	152 mm
Package Level 1 Gross Weight	8.4 kg
Package Level 1 EAN	6417019245065

---

---

## Classifications

---

Object Classification Code	Q
ETIM 7	EC000216 - Switch disconnecter
ETIM 8	EC000216 - Switch disconnecter
ETIM 9	EC000216 - Switch disconnecter (low voltage)
eClass	V11.1 : 27371403
WEEE Category	5. Small Equipment (No External Dimension More Than 50 cm)
E-Number (Finland)	3660781

---

---

## Categories

---

Low Voltage Products and Systems → Switches → Switch Disconnectors

