

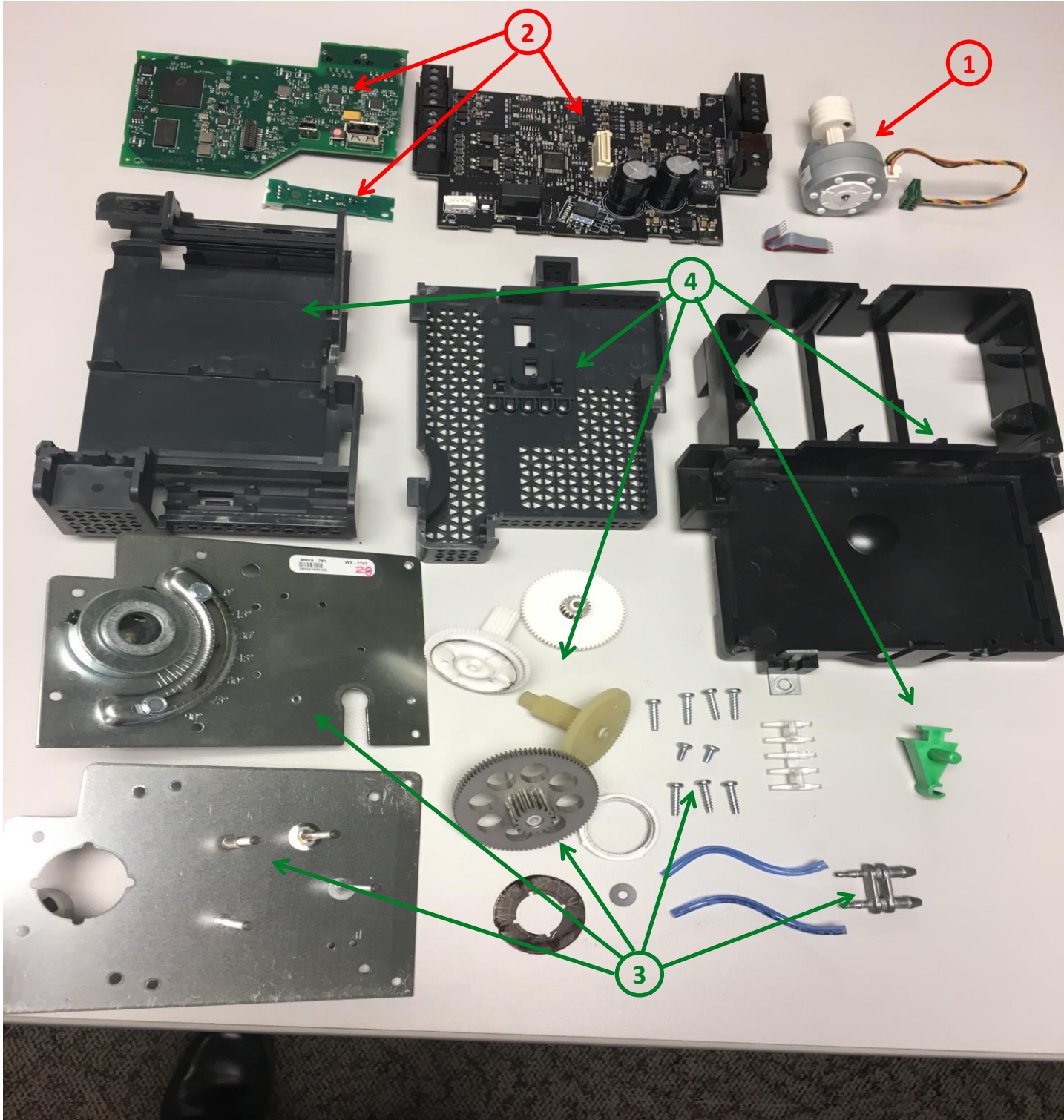
Product End of Life Instructions

MP-V, 9 points, 4 UI, 3 DO Triac, 2 AO

MP-V-9A, MP-V-7A



 **End of Life Instructions**



Recommendation	Number on drawing	Component / Material	Weight (in g)	Comment
To be depolluted	1	Motor Assembly	84	
To be depolluted	2	Electronic Board (Communication) > 10cm ²	151	3 PCBA: 47g, 102g, 2g
To be dismantled	3	Steel / Aluminum / Zamak-3	537	
To be dismantled	4	Base and Cover Assy / polycarbonate	310	
To be dismantled				



Product description

Manufacturer identification	Schneider Electric Industries SAS
Brand name	Schneider Electric
Product function	MP-V is a multi-purpose, fully programmable, IP based field controller dedicated for VAV cooling and heating applications. MP-V integrates a controller, a damper actuator, and an air flow sensor in a single compact package for ease of installation. As the parent server. MP-V comes in two models with different I/O count.
Product reference	SXWMPV9AX10001
Additional similar product references	SXWMPV9AX10001 SXWMPV7AX10001
Total representative product mass	1130 g
Representative product dimensions	161 W x 198 H x 63 D mm
Accessories	0
Date of information release	05/2018



Additional information

Legal information	This product family is in the scope of European Union directive 2012/19/EU on Waste Electrical and Electronic Equipment (WEEE). The product family must be disposed according to the legislation of the country. This document is intended for use by end of life recyclers or treatment facilities. It provides the basic information to assure an appropriate end of life treatment for the components and materials of the product.	
In case of special transportation: transportation method	0	
Recyclability potential	79%	Based on "ECO'DEEE recyclability and recoverability calculation method" (version V1, 20 Sep. 2008 presented to the French Agency for Environment and Energy Management: ADEME).

Schneider Electric Industries SAS

Country Customer Care Center
<http://www.schneider-electric.com/contact>

35, rue Joseph Monier
 CS 30323

F- 92506 Rueil Malmaison Cedex
 RCS Nanterre 954 503 439
 Capital social 896 313 776 €

www.schneider-electric.com

ENVEOLI1802009_V1

Published by Schneider Electric

© 2017 - Schneider Electric – All rights reserved

05/2018