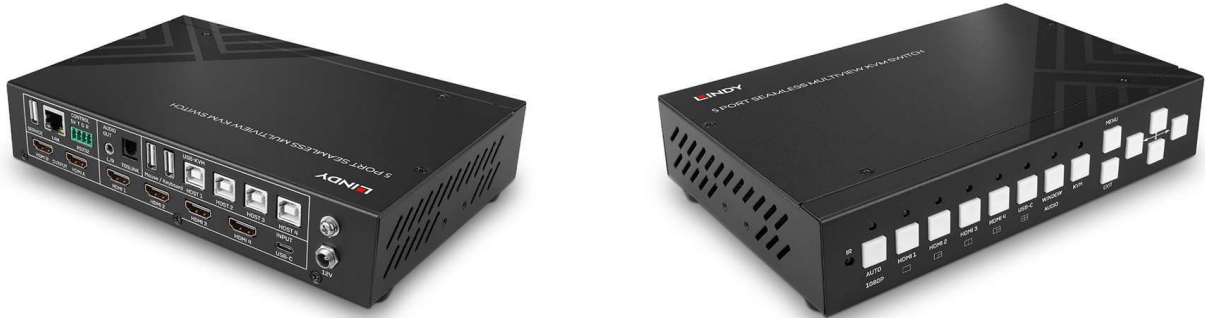


Part no.:

32330

5 Port Seamless Multiview KVM Switch

Advanced switch solution for HDMI and USB Type C sources



| DESCRIPTION

- KVM or Video management of 4 HDMI and 1 USB Type C inputs
- Seamless switching, EDID management, 5 multiview modes and KVM function with mouse roaming
- Control via OSD menu, IR remote control, hot-keys, TCP/IP and RS-232 commands
- 3.5mm and TosLink Audio outputs with volume control
- 2 year warranty

This advanced HDMI 4K60 Switch is able to display up to 4 sources at the same time on a 4K screen with KVM control connecting also the USB Type B ports. There are 5 different Multiview modes, Single, PIP, PBP, 3xWIN and 4xWIN while with USB roaming function is possible to get the KVM control of different sources by simply moving the mouse pointer from one window to another.

The unit has 4 HDMI and 1 USB Type C video inputs, switching between the sources is seamless, without any black screen or screen freezing. All the features can be managed in many ways, by pushing the buttons on the front panel via OSD menu, IR remote control (included), keyboard hot-keys for KVM selection, TCP/IP or RS-232 software GUI and commands. All of these different possibilities and features make this Switch perfect for any kind of installation, from AV pro solutions to mission critical control rooms, in broadcasting, E-Sports and security applications.

It provides also one additional HDMI mirrored output for local monitoring or for video capture adding a HDMI to USB video capture device. 3.5mm analog and TosLink digital optical audio outputs allow to manage independent audio selection, supporting many audio formats; with LPCM 2.0 format the volume can be controlled as well.

Specifications

- AV Interface: HDMI, Type C
- Console Interfaces: USB
- Interface Standard: HDMI 2.0, USB 2.0
- Maximum Resolution: 4096x2160@60Hz 4:4:4 8Bit
- HDCP Support: 2.2
- Supported Audio: LPCM, AC3, DD+, DTS, DTS-HD Up to 7.1 channel
- Separate Audio Ports: 3.5mm, TosLink (Optical)
- Serial Interface: 4-pin phoenix connector
- Console Number: 1
- Max Number PC/Server: 5
- Cascadable: No
- Switching Method: OSD menu, IR remote control, hot-keys (KVM), TCP/IP and RS-232 commands
- 19" Rack Mountable: No
- Special Features: Multiview, Seamless, USB roaming, Audio volume control

Connectors

- Console Interfaces: 2x HDMI (Female), 2x USB Type A (Female), 3.5mm Audio (Female), TosLink (Female)
- PC/Server Interfaces: 4x HDMI (Female), USB Type C (Female), 4x USB Type B (Female)
- Other Interfaces: RS-232 4-pin phoenix, RJ45, USB Type A (Female) service
- Power: 5.5/2.1mm

Physical Properties

- Dimensions WxDxH: 219x146x44mm (8.62x5x75x1x73in)
- Housing Material: Metal
- Net Weight: 1.3kg (2.87lb)
- Operating Temperature: 0°C - 40°C (32°F - 104°F)
- Storage Temperature: -20°C - 60°C (-4°F - 140°F)
- Humidity: 10 - 70% RH (non-condensing)
- Power Requirements: 12VDC 2.5A
- Colour: Black

Miscellaneous

- Packaging Type: Carton Box
- Packaging Dimensions: 360x260x75mm (14.17x10x24x2x95in)
- Gross Weight: 1.8kg (3.97lb)
- Warranty (Years): 2
- Product Compliance: CE, UKCA, FCC, RoHS, REACH & California Proposition 65

Package Contents

- 5 Port HDMI 4K60 Seamless Multiview KVM Switch
- IR remote control
- 4-Pin Terminal Block
- 2x Mounting ears with screws
- Multi-Country Power Supply (EU, UK, US & AUS)
- Lindy Manual

Purchasing Information

- No.: 32330
- EAN: 4002888323307