

Product Data Sheet

DX15632X

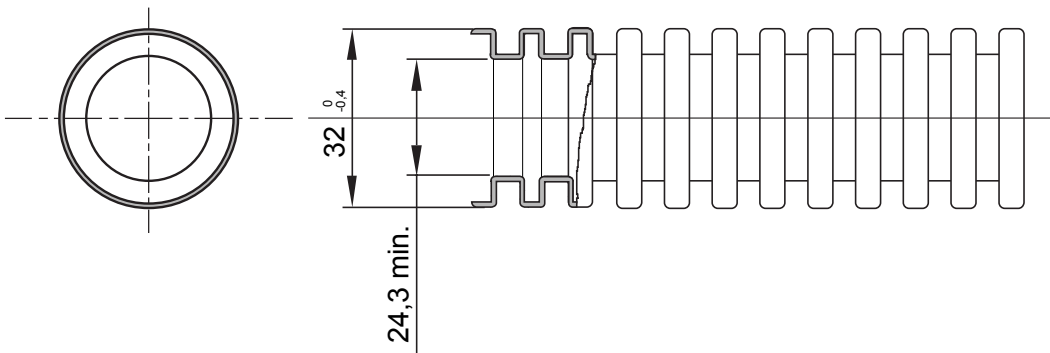
FK Range



FK-Xtreme is a series of folding tubes available in 4 diameters (from 20 mm to 40 mm) and 6 colours, to identify the different lines of the electrical system. FK-Xtreme tubes are made via a co-extrusion process, which prevents the infiltration of liquid cement used for the creation of self-levelling substrates and allows the mechanical properties of the tubes to remain intact, even in extreme conditions. The range is designed to facilitate optimal setting and wiring operations.

Colour	Brown	Material	Coextruded PVC
Type	without cable puller	Conduits Ø (mm)	32
Glow Wire Test	960 °C	Electrocod	2112
Resistance to compression	3 (Medium \geq 750 N)	Resistance to impact	3 (Medium \geq 2 J)
Resistance to bending	2 (Pliable)	Electrical characteristics	2 (With electrical insulating characteristics)
Protection against ingress of solid objects without accessories	0	Protection against ingress of water	0
Resistance against corrosion	Not applicable to plastic conduit systems	Fire resistance	1 (Non-flame propagating)
Insulation resistance	100 M Ω a 500V for 1 minute	Protection against ingress of solid objects with GF coupling	-
Dielectric rigidity	2000 V a 50 Hz for 15 minutes	Standard	EN 61386-1 EN 61386-22
Classification	3341		

DIMENSIONAL



TECHNICAL SYMBOLOGY

GWT

960 °C

STANDARDS/APPROVALS

