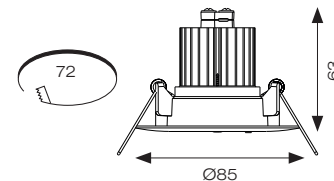


Merlin Emergency Downlight



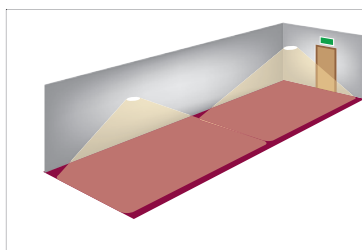
- Ultra-low profile recessed self-test emergency downlight
- Option of escape route or open area models
- High specification optic design and performance allows increased spacing providing reduced cost
- Available in black and white finishes
- Self-test as standard
- Up to 17.8 metres spacing between luminaires



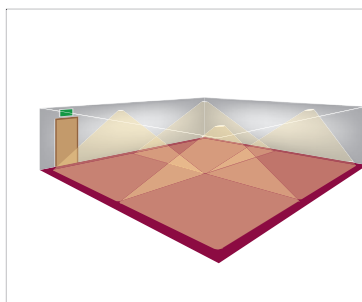
White - Open Area



Black - Escape Route



***	Escape route 2 metres wide (1 Lux minimum) *			
Mounting Height (M)	Transverse to Wall	Transverse to Transverse	Axial to Wall	Axial to Axial
2.5	-	-	6	14.5
4	-	-	8	19.6
2.5	-	-	5.8	12.5
4	-	-	8	18



***	Open (Anti-Panic) area (0.5 Lux Minimum)**			
Mounting Height (M)	Transverse to Wall	Transverse to Transverse	Axial to Wall	Axial to Axial
2.5	3	6.5	3	6.5
4	4	9.5	4	9.5
6	5	11.5	5	11.5
2.5	3	5.5	3	5.5
4	4	8	4	8
6	5	10	5	10

INPUT	HERTZ	TEMP	LIFETIME (HRS)	BEAM ANGLE	CLASS	IP	IK
230V	50Hz	0°C to 40°C	L70 50,000	Open area - 110° / Escape route - 140°x53°	1	IP20	IK08

CODE	DESCRIPTION	WATTAGE	CCT	EMERGENCY MODE	TRADE
AMELED/ER/3NM/ST	Non-Maintained - Escape Route	5W	6500K	248lm	£82.00
AMELED/OA/3NM/ST	Non-Maintained - Open Area	5W	6500K	274lm	£82.00
AMELED/ER/3NM/ST/B	Non-Maintained - Escape Route - Black	5W	6500K	235lm	£82.00
AMELED/OA/3NM/ST/B	Non-Maintained - Open Area - Black	5W	6500K	211lm	£82.00

CODE (ACCESSORIES)	DESCRIPTION	TRADE
ASBP/9/LI	3.2V 5500mAh-5 Li-FePO4 Replacement Battery	£19.70