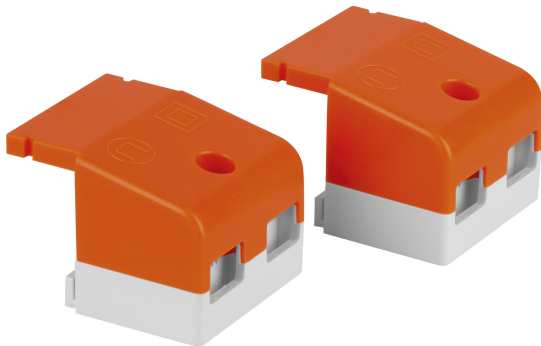


PRODUCT DATASHEET

DR AY PC-PFM-CLAMP DUO

LED DRIVER CABLE CLAMP | Driver accessories kit for LED DRIVER DIP SWITCH / PHASE-CUT



PERFOR-
MANCE
CLASS

Areas of application

- Downlights, flat luminaires
- Suitable for different cable types
- Suitable for indoor applications.

Product benefits

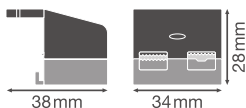
- Simple and quick cable mounting
- Sufficient space for cable connection
- Free cable connection thanks to open flaps

Product features

- Easy to install and flexible cable clamps
- Separate cable clamps for primary and secondary side
- Pre-fixed, captive screws

TECHNICAL DATA

Dimensions & Weight



| | |
|----------------|---------|
| Length | 38.3 mm |
| Width | 34.0 mm |
| Height | 28.5 mm |
| Product weight | 1.00 g |

Colors & materials

| | |
|---------------|--------------|
| Product color | Orange/White |
|---------------|--------------|

Temperatures & operating conditions

| | |
|--|------|
| Max.housing temperature in case of fault | - °C |
|--|------|

Capabilities

| | |
|----------|----|
| Dimmable | No |
|----------|----|

EQUIPMENT / ACCESSORIES

- DR AY DS-P -CLAMP DUO suitable for LED DRIVER DIP SWITCH P
- DR AY DS-PFM -CLAMP DUO suitable for LED DRIVER DIP SWITCH PFM
- DR AY PC-PFM-CLAMP DUO suitable for LED DRIVER PHASE-CUT PFM

LOGISTICAL DATA

| Product code | Packaging unit (Pieces/Unit) | Dimensions (length x width x height) | Gross weight | Volume |
|---------------|------------------------------|--------------------------------------|--------------|-----------------------|
| 4058075313170 | BAG 2 | 120 mm x 80 mm | 3.00 g | |
| 4058075313187 | Shipping box 20 | 172 mm x 172 mm x 59 mm | 99.00 g | 1.75 dm ³ |
| 4058075313194 | Shipping box 120 | 534 mm x 190 mm x 147 mm | 946.00 g | 14.91 dm ³ |

The mentioned product code describes the smallest quantity unit which can be ordered. One shipping unit can contain one or more single products. When placing an order, for the quantity please enter single or multiples of a shipping unit.

DISCLAIMER

Subject to change without notice. Errors and omission excepted. Always make sure to use the most recent release.