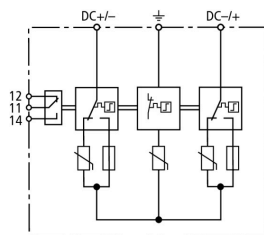


DG YPV SCI 600 FM (950 536)

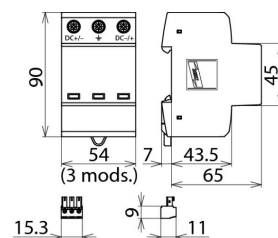
- Prewired complete unit for use in photovoltaic systems
- Combined disconnection and short-circuiting device with safe electrical isolation (patented SCI principle)
- Tried and tested fault-resistant Y circuit



Figure without obligation



Basic circuit diagram DG YPV SCI 600 FM



Dimension drawing DG YPV SCI 600 FM

Multipole surge arrester with three-step d.c. switching device for use in PV systems, with remote signalling contact for monitoring device (floating changeover contact).

Type	DG YPV SCI 600 FM
Part No.	950 536
SPD according to EN 61643-31 / IEC 61643-31	type 2 / class II
Max. PV voltage (U_{CPV})	600 V
Short-circuit current rating (I_{SCPV})	1000 A
Total discharge current (8/20 μ s) (I_{total})	40 kA
Nominal discharge current (8/20 μ s) [(DC+/DC-) --> PE] (I_n)	12.5 kA
Max. discharge current (8/20 μ s) [(DC+/DC-) --> PE] (I_{max})	25 kA
Voltage protection level (U_P)	≤ 2.5 kV
Voltage protection level at 5 kA (U_P)	≤ 2 kV
Response time (t_A)	≤ 25 ns
Operating temperature range (T_U)	-40 °C ... +80 °C
Operating state / fault indication	green / red
Number of ports	1
Cross-sectional area (min.)	1.5 mm ² solid / flexible
Cross-sectional area (max.)	35 mm ² stranded / 25 mm ² flexible
For mounting on	35 mm DIN rails acc. to EN 60715
Enclosure material	thermoplastic, red, UL 94 V-0
Place of installation	indoor installation
Degree of protection	IP 20
Capacity	3 mod(s), DIN 43880
Approvals	KEMA, UL
Type of remote signalling contact	changeover contact
Switching capacity (a.c.)	250 V / 0.5 A
Switching capacity (d.c.)	250 V / 0.1 A, 125 V / 0.2 A, 75 V / 0.5 A
Cross-sectional area for remote signalling terminals	max. 1.5 mm ² solid / flexible
Weight	285 g
Customs tariff number	85363030
GTIN	4013364154995
PU	1 Stk

We reserve the right to introduce changes in performance, configuration and technology, dimensions, weights and materials in the course of technical progress. The figures are shown without obligation.