

Wall-mounted Conductor Holders

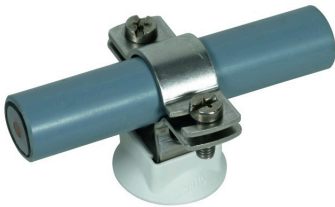
Accessories



LH ZS 20 23 KS H10 V2A (275 259)

With plastic base.

Conductor holder for wall mounting with two-screw cleat (not for use in the sealing end range).



Type	LH ZS 20 23 KS H10 V2A
Part No.	275 259
Material of conductor holder	StSt
Conductor leading	fixed
Conductor holder support Rd	20 / 23mm
Height of conductor holder	24mm
Thread	M8
Screw	☒ M6 x 16mm
Standard	DIN EN 62561-4
Weight	49 g
Customs tariff number (Comb. Nomenclature VAE)	85389099
GTIN	4013364155633
PU	25 Stk

