

# Product Data Sheet

## GW52028

GW FIT Range



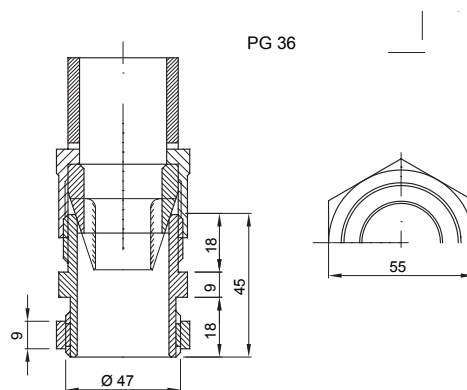
Systems of accessories for electrical installations used for residential, tertiary and industrial applications. The system consists of fasteners for pipes and cables, cable fittings, accessories for rigid pipes (RK Series) and flexible conduit (DF Series). The system include also a wide variety of cable ties (52FS Range) and terminal blocks (44 Range).

|                      |               |                            |                                 |
|----------------------|---------------|----------------------------|---------------------------------|
| Colour               | Grey RAL 7035 | IP degree                  | IP66                            |
| Material             | Nylon         | For cables Ø (mm)          | from 17 to 20/from 30 to 34     |
| PG pitch             | 36            | For external conduits (mm) | 40                              |
| Mounting hole Ø (mm) | 48            | Description                | Cable gland                     |
| Glow Wire Test       | 650 °C        | Operating temperature      | -25 +65 °C                      |
| Electrocod           | 36B           | Standard                   | EN 50262 - IEC62444 - DIN 40430 |

### BEHAVIOUR WITH CHEMICAL AND ATMOSPHERIC AGENTS

| Saline solution | Acids              |                    | Bases        |           | Solvents  |           |           |               | Mineral oil | UV rays            |
|-----------------|--------------------|--------------------|--------------|-----------|-----------|-----------|-----------|---------------|-------------|--------------------|
|                 | Concentrated       | Diluted            | Concentrated | Diluted   | Hexane    | Benzol    | Acetone   | Ethyl alcohol |             |                    |
| Resistant       | Limited resistance | Limited resistance | Resistant    | Resistant | Resistant | Resistant | Resistant | Resistant     | Resistant   | Limited resistance |

### DIMENSIONAL



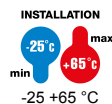
### TECHNICAL SYMBOLOGY

IP

IP66

GWT

650 °C



-25 +65 °C

### STANDARDS/APPROVALS

