






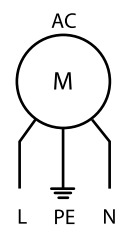
7F.20-1020

7F.02

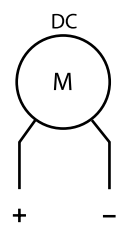
7F.2x.x.xxx.1020 7F.2x.x.xxx.1020.0	
	U _N 110...120 V AC (50/60 Hz) (8.120) U _N 230...240 V AC (50/60 Hz) (8.230) U _N 24 V DC (9.024)
	P _N AC (50/60 Hz) 27/21 W P _N DC 3.6 W
OUT	m ³ /h (50/60Hz) 24/29
	m ³ /h (50/60Hz) + 7F.02 14/16.5
	dB (A) 27 (AC) 37.5 (DC)
	(-15...+55)°C
IP54	
 <p>For Use on a Flat Surface of a Type 1, 12 Enclosure Use copper conductor only, 90°C min Conductor size 14-18 AWG Surrounding air temperature 55°C</p>	

1

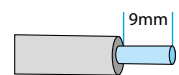
1a



1b

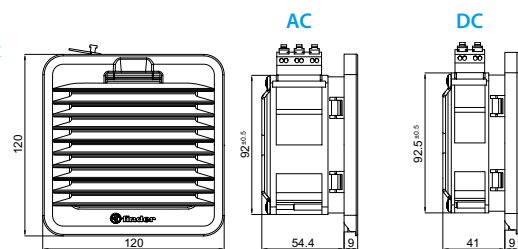
0.75...2.5 mm²

18...14 AWG

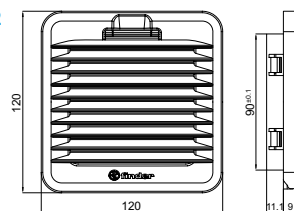


2

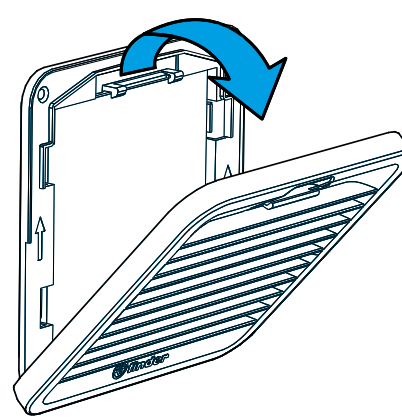
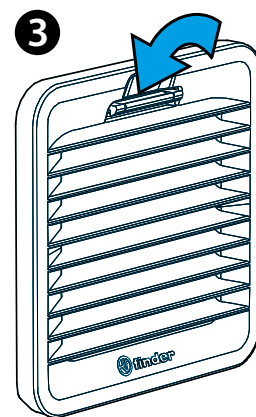
7F.2x



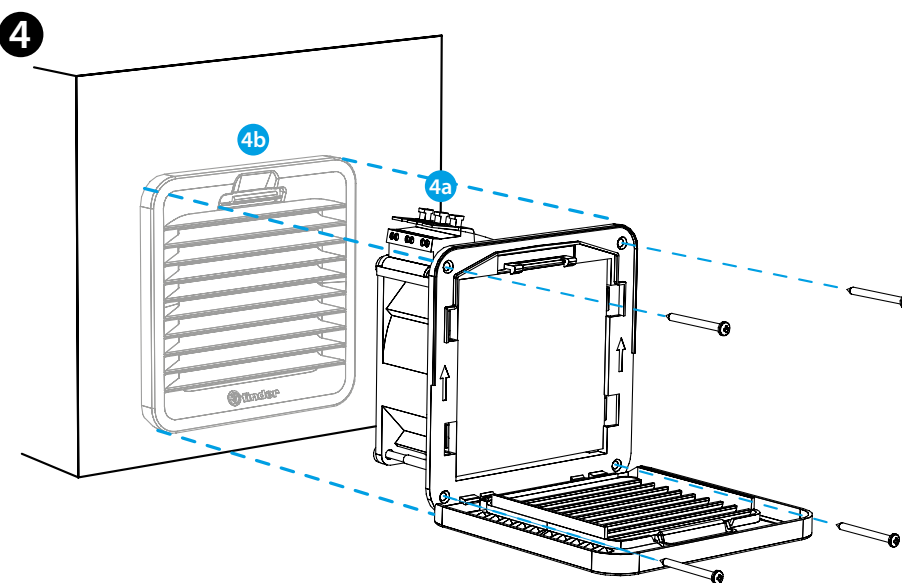
7F.02



3



4



7F.20 FILTERVENTILATOR

7F.21 FILTERVENTILATOR IN "BLAZENDE" UITVOERING

1 1a AANSLUITSCHEMA AC
1b AANSLUITSCHEMA DC

2 AFMETINGEN (mm)
7F.2x Ventilator
7F.02 Rooster

3 OPENING ROOSTER- FILTER VERVANGING

Filtermat 07F.15

Filterklasse

EU3 volgens DIN 24185, filtergraad (80...90)%

Filter materiaal

Synthetische vezel met progressieve opbouw, temperatuurbestendigheid tot 100°C, zelfdovend, klasse F1 (DIN 53438)

4 MONTAGE (voorbeeld)

Installatie met alleen bevestigingsclips is mogelijk voor een wanddikte van 1 tot 2,5 mm.

Bevestiging met schroeven (meegeleverd) wordt aanbevolen.

Vastzetkoppel 0,3 Nm.

Montage volgorde:

1 Haal het klemmenblok weg 4a

2 Plaats de ventilator in het daarvoor bestemde gedeelte 4b

3 Plaats het klemmenblok opnieuw 4a

OPMERKINGEN

7F.2x.x.xxx.1020 Ventilator Grey Color RAL 7035

7F.2x.x.xxx.1020.0 Ventilator Black Color RAL 9004

7F.02.0.000.1000 Rooster Grey Color RAL 7035

7F.02.0.000.1000.0 Rooster Black Color RAL 9004