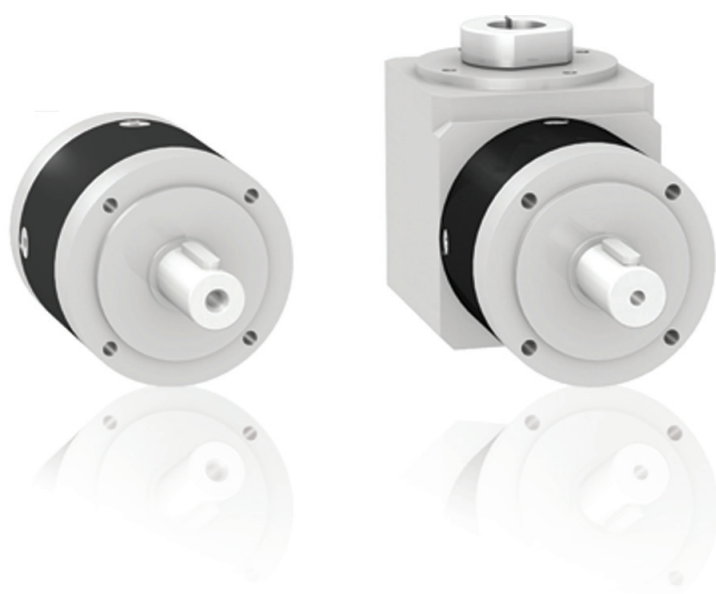


# GBX and GBY Planetary gearboxes

For Lexium servo motors,  
and Lexium 62 ILM integrated drives

Catalog

March **2019**



# Quick access to product information

## Get technical information about your product

References

**Telefast Pre-wired System**  
Modicon ABE9 IP 67 passive splitter boxes

References					
Splitter boxes with connection by M23 connector					
Number of channels	Connection by	LED indicator	Reference	Weight (kg)	
4	4 x M12 female connection	Yes	ABE912W1223	0.280	
6	6 x M12 female connection	Yes	ABE912W1226	0.370	
8	8 x M12 female connection	Yes	ABE912W1228	0.500	
12	12 x M12 female connection	Yes	ABE912W1236	0.750	
16	16 x M12 female connection	Yes	ABE912W1248	1.000	
Splitter boxes with connection by cable					
Number of channels	Connection by	Length (m)	LED indicator	Reference	Weight (kg)
4	4 x M12 female connectors	14.4	No	ABE912W1245	0.280
6	6 x M12 female connectors	14.4	No	ABE912W1246	0.400
8	8 x M12 female connectors	14.4	No	ABE912W1247	0.520
12	12 x M12 female connectors	14.4	No	ABE912W1248	0.750
16	16 x M12 female connectors	14.4	No	ABE912W1249	1.000

**Schneider Electric**

XB5AL73415  
green flush/red projecting double-headed pushbutton Ø22 with marking

Download your XB5AL73415 datasheet

Change your selection

Discover other products & accessories

Discover your Schneider Electric tools

Characteristics | Dimensions Drawings | Mounting and Clearance | Documents & Downloads

Main

Range of product	Harmony XB5
Product or component type	Complete double-headed push-button
Device short name	XB5
Bezel material	Plastic
Fixing collar material	Plastic
Head type	Standard
Mounting diameter	22 mm
Shape of signaling unit head	Rectangular
Type of operator	Spring return
Operator profile	1 flush - 1 projecting push-buttons
Operators description	Green "I" - red "O"
Contacts type and composition	1 NO + 1 NC
Contact operation	Slow-break

Each commercial reference presented in a catalog contains a hyperlink. Click on it to obtain the technical information of the product:

- Characteristics, Dimensions and drawings, Mounting and clearance, Connections and schemas, Performance curves
- Product image, Instruction sheet, User guide, Product certifications, End of life manual

## Find your catalog



- > With just 3 clicks, you can reach the Industrial Automation and Control catalogs, in both English and French
- > Download Digi-Cat with this [link](#)

- Updated quarterly
- Embeds product selectors and configurators, 360° images, training centers,
- Optimized search by commercial reference

## Select your training



- > Find the right [Training](#) for your needs on our Global website
- > Locate the training center with the selector tool, using this [link](#)

# General content

## Planetary gearboxes

**GBX planetary gearboxes,  
GBY angular planetary gearboxes**

For Lexium Servo motors and Lexium 62 integrated drives

- **Presentation**..... [page 2](#)
- **GBX planetary gearboxes**
  - References ..... [page 3](#)
  - Combinations: GBX planetary gearboxes,
    - with BSH Servo motors ..... [page 4](#)
    - with BMH Servo motors ..... [page 4](#)
    - with SH3 Servo motors ..... [page 4](#)
    - with MH3 Servo motors ..... [page 4](#)
    - with BMI Servo motors ..... [page 4](#)
    - with BCH2 Servo motors ..... [page 5](#)
    - with Lexium 62 ILM integrated drives ..... [page 5](#)
- **GBY angular planetary gearboxes**
  - References ..... [page 6](#)
  - Combinations: GBY angular planetary gearboxes,
    - with BSH Servo motors ..... [page 6](#)
    - with BMH Servo motors ..... [page 6](#)
    - with BMI Servo motors ..... [page 6](#)
    - with SH3 Servo motors ..... [page 7](#)
    - with MH3 Servo motors ..... [page 7](#)
    - with Lexium 62 ILM ..... [page 7](#)
- **GBK adaptation kit**
  - References ..... [page 8](#)
  - Combinations: GBK adapter kit,
    - with BSH Servo motors ..... [page 8](#)
    - with BMH Servo motors ..... [page 9](#)
    - with SH3 Servo motors ..... [page 9](#)
    - with MH3 Servo motors ..... [page 9](#)
    - with BMI Servo motors ..... [page 9](#)
    - with Lexium 62 ILM integrated drives ..... [page 9](#)
- **Product reference index**..... [page 10](#)

### Related offers



Lexium BSH/BMH Servo motors: consult catalog ref. [DIA7ED2140501EN](#)



Lexium BMI Servo motors: consult catalog ref. [DIA7ED2130301EN](#)



Lexium SH3/MH3 Servo motors: consult catalog ref. [DIA7ED2160308EN](#)



Lexium BCH2 Servo motors: consult catalog ref. [DIA7ED2150401EN](#)



Lexium 62 ILM integrated drives: consult catalog ref. [DIA7ED2160306EN](#)

## Planetary gearboxes

### GBX planetary gearboxes, GBY angular planetary gearboxes

For Lexium Servo motors and Lexium 62 ILM integrated drives

PF080956



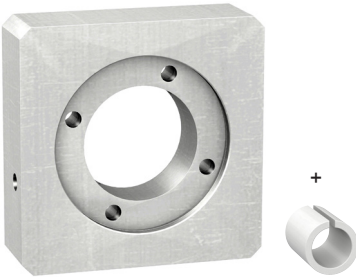
GBX planetary gearboxes

PF080837



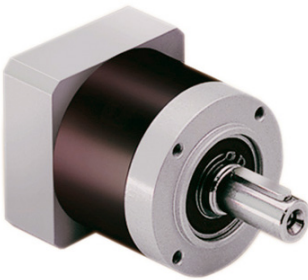
GBY angular planetary gearbox

PF080958



GBK adaptation kit

PF105816



GBX160 planetary gearbox

#### Presentation

**Motion control often requires the use of gearboxes to adapt speeds and torques, while providing the precision demanded by the application.**

Schneider Electric has chosen to use **GBX** planetary gearboxes and **GBY** angular planetary gearboxes for their Lexium servo motors and Lexium 62 ILM integrated drives.

The combination of Lexium servo motors and Lexium 62 ILM integrated drives with suitable planetary gearboxes makes them easy to mount and sand up. The gearboxes are designed for applications that are not susceptible to mechanical backlash. They have a keyed shaft, are lubricated for life, and conform to IP 54 degree of protection.

- Available in 5 sizes (GBX40, GBX60, GBX80, GBX120 and GBX160), planetary gearboxes are offered with 15 reduction ratios (3:1...100:1).
- GBY angular planetary gearboxes are available in 3 sizes (GBY60, GBY80, and GBY120), available with 7 reduction ratios (3:1...40:1).

The tables on the following pages show the most suitable combinations of servo motor and GBX or GBY planetary gearbox. For other combinations or additional information on planetary gearbox characteristics, please refer to the servo motor data sheets on our web site, [www.schneider-electric.com](http://www.schneider-electric.com) or contact your local sales office.

A GBK adaptation kit is available for mounting the Lexium servo motors and the Lexium 62 ILM integrated drives with GBX40, GBX60, GBX80, and GBX120 or GBY60, GBY80, and GBY120 planetary gearboxes.

The GBX160 planetary gearbox includes an integrated adaptation kit as standard equipment. The adaptation kit includes:

- An adaptation plate
- A shaft end adaptation, depending on the servo motor / planetary gearbox combination
- Accessories for mounting the plate on the planetary gearbox
- Accessories for mounting the servo motor

# Planetary gearboxes

## GBX planetary gearboxes

For Lexium Servo motors and Lexium 62 ILM integrated drives

References			
GBX planetary gearboxes			
Size	Reduction ratio	Reference	Weight kg/lb
GBX040	3:1, 5:1 and 8:1	GBX040●●●K	0.900/1.984
GBX060	3:1, 4:1, 5:1, 8:1 and 10:1	GBX060●●●K	0.900/1.984
	9:1, 12:1, 15:1, 16:1, 20:1, 25:1, 32:1 and 40:1	GBX060●●●K	1.000/2.205
	60:1	GBX060●●●K	1.300/2.866
GBX080	3:1, 4:1, 5:1, 8:1 and 10:1	GBX080●●●K	2.100/4.630
	9:1, 12:1, 15:1, 16:1, 20:1, 25:1, 32:1 and 40:1	GBX080●●●K	2.600/5.732
GBX120	3:1, 4:1, 5:1, 8:1 and 10:1	GBX120●●●K	6.000/13.228
	9:1, 12:1, 15:1, 16:1, 20:1, 25:1, 32:1 and 40:1	GBX120●●●K	8.000/17.637
	60:1, 80:1 and 100:1	GBX120●●●K	10.000/22.046
GBX160	8:1	GBX160●●●●●●●F	18.000/39.683
	12:1, 15:1, 16:1, 20:1, 25:1, 32:1 and 40:1	GBX160●●●●●●●F	22.000/48.502

To order a GBX●●●●●●●K planetary gearbox, complete each reference:

	GBX	●●●	●●●	K
Size (Casing diameter)	40 mm (1.58 in.)	040		
	60 mm/ 2.36 in.	060		
	80 mm/ 3.15 in.	080		
	120 mm/ 4.72 in.	120		
Reduction ratio	3:1		003	
	4:1		004	
	5:1		005	
	8:1		008	
	9:1		009	
	10:1		010	
	12:1		012	
	15:1		015	
	16:1		016	
	20:1		020	
	25:1		025	
	32:1		032	
	40:1		040	
	60:1		060	
80:1		080		
100:1		100		
Mounting with GBK adaptation kit (see page 8)				K

To order a GBX160●●●●●●●●●●F planetary gearbox, complete each reference:

	GBX	●●●	●●●	●●●	●	F
Size (Casing diameter)	160 mm/ 6.30 in.	160				
Reduction ratio	8:1		008			
	12:1		012			
	15:1		015			
	16:1		016			
	20:1		020			
	25:1		025			
	32:1		032			
	40:1		040			
Associated Lexium servo motors	Type			100		
	Motor			140		
					1	
					2	
					3	
					4	
Integrated servo motor adaptation						F

PF030936



GBX planetary gearbox

PF105616



GBX160 planetary gearbox

# Planetary gearboxes

## GBX planetary gearboxes

For Lexium Servo motors and Lexium 62 ILM integrated drives

Lexium servo motor / GBX planetary gearbox combinations														
Lexium BSH Servo motors	Reduction ratio													
	3:1, 4:1	5:1	8:1	9:1	10:1	12:1	15:1, 16:1	20:1	25:1	32:1	40:1	60:1	80:1	100:1
BSH0401	GBX040	GBX040	GBX040	-	-	-	-	-	-	-	-	-	-	-
BSH0402	GBX040	GBX040	GBX040	-	-	-	-	-	-	-	-	-	-	-
BSH0551	GBX060	GBX060	GBX060	GBX060	GBX060	GBX060	GBX060	GBX060	GBX060	GBX060	GBX060	GBX060	-	-
BSH0552	GBX060	GBX060	GBX060	GBX060	GBX060	GBX060	GBX060	GBX060	GBX060	GBX060	-	-	-	-
BSH0553	GBX060	GBX060	GBX060	GBX060	GBX060	GBX060	GBX060	GBX060	GBX060	-	-	-	-	-
BSH0701	GBX060	GBX060	GBX060	GBX060	GBX060	GBX060	GBX060	GBX080	GBX080	GBX080	GBX080	GBX120	GBX120	GBX120
BSH0702	GBX060	GBX060	GBX080	GBX060	GBX080	GBX060	GBX080	GBX080	GBX080	GBX120	GBX120	GBX120	GBX120	GBX120
BSH0703	GBX060	GBX060	GBX080	GBX060	GBX080	GBX080	GBX080	GBX080	GBX120	GBX120	GBX120	GBX120	GBX120	GBX120
BSH1001	GBX080	GBX080	GBX080	GBX080	GBX120	GBX080	GBX080	GBX080	GBX120	GBX120	GBX120	-	-	-
BSH1002	GBX080	GBX080	GBX120	GBX080	GBX120	GBX080	GBX120	GBX120	GBX120	GBX160	GBX160	GBX160	-	-
BSH1003	GBX080	GBX080	GBX120	GBX080	GBX120	GBX120	GBX120	GBX120	GBX120	GBX160	GBX160	GBX160	-	-
BSH1004	GBX120	GBX120	GBX120	GBX120	-	GBX120	GBX160	GBX160	GBX160	GBX160	GBX160	GBX160	-	-
BSH1401	GBX120	GBX120	GBX120	GBX120	-	GBX120	GBX160	GBX160	GBX160	GBX160	GBX160	GBX160	-	-
BSH1402	GBX120	GBX120	GBX160	-	-	GBX160	GBX160	GBX160	GBX160	GBX160	GBX160	GBX160	-	-
BSH1403	GBX120	GBX120	GBX160	-	-	GBX160	GBX160	GBX160	GBX160	GBX160	GBX160	GBX160	-	-
BSH1404	GBX120	GBX120	GBX160	-	-	GBX160	GBX160	GBX160	-	-	-	-	-	-
Lexium BMH Servo motors	Reduction ratio													
	3:1, 4:1	5:1	8:1	9:1	10:1	12:1	15:1, 16:1	20:1	25:1	32:1	40:1	60:1	80:1	100:1
BMH0701	GBX060	GBX060	GBX060	GBX060	GBX060	GBX060	GBX060	GBX080	GBX080	GBX080	GBX080	GBX120	GBX120	GBX120
BMH0702	GBX060	GBX060	GBX080	GBX060	GBX080	GBX060	GBX080	GBX080	GBX080	GBX120	GBX120	GBX120	GBX120	GBX120
BMH0703	GBX060	GBX060	GBX080	GBX060	GBX080	GBX080	GBX080	GBX080	GBX120	GBX120	GBX120	GBX120	GBX120	GBX120
BMH1001	GBX080	GBX080	GBX080	GBX080	GBX080	GBX080	GBX080	GBX080	GBX120	GBX120	GBX120	-	-	-
BMH1002	GBX080	GBX080	GBX120	GBX080	GBX080	GBX080	GBX120	GBX120	GBX160	GBX160	GBX160	-	-	-
BMH1003	GBX080	GBX080	GBX120	GBX080	GBX120	GBX120	GBX120	GBX120	GBX160	GBX160	GBX160	-	-	-
BMH1401	GBX120	GBX120	GBX120	GBX120	-	GBX120	GBX160	GBX160	GBX160	GBX160	GBX160	-	-	-
BMH1402	GBX120	GBX120	GBX160	-	-	GBX160	GBX160	GBX160	GBX160	GBX160	GBX160	-	-	-
BMH1403	GBX120	GBX120	GBX160	-	-	GBX160	GBX160	GBX160	GBX160	GBX160	GBX160	-	-	-
Lexium SH3 Servo motors	Reduction ratio													
	3:1, 4:1	5:1	8:1	9:1	10:1	12:1	15:1, 16:1	20:1	25:1	32:1	40:1	60:1	80:1	100:1
SH30401	GBX040	GBX040	GBX040	-	-	-	-	-	-	-	-	-	-	-
SH30402	GBX040	GBX040	GBX040	-	-	-	-	-	-	-	-	-	-	-
SH30551	GBX060	GBX060	GBX060	GBX060	GBX060	GBX060	GBX060	GBX060	GBX060	GBX060	GBX060	GBX060	-	-
SH30552	GBX060	GBX060	GBX060	GBX060	GBX060	GBX060	GBX060	GBX060	GBX060	GBX060	GBX060	-	-	-
SH30553	GBX060	GBX060	GBX060	GBX060	GBX060	GBX060	GBX060	GBX060	GBX060	-	-	-	-	-
SH30701	GBX060	GBX060	GBX060	GBX060	GBX060	GBX060	GBX060	GBX080	GBX080	GBX080	GBX080	GBX120	GBX120	GBX120
SH30702	GBX060	GBX060	GBX080	GBX060	GBX080	GBX060	GBX080	GBX080	GBX080	GBX120	GBX120	GBX120	GBX120	GBX120
SH30703	GBX060	GBX060	GBX080	GBX060	GBX080	GBX080	GBX080	GBX080	GBX120	GBX120	GBX120	GBX120	GBX120	GBX120
SH31001	GBX080	GBX080	GBX080	GBX080	GBX120	GBX080	GBX080	GBX080	GBX120	GBX120	GBX120	-	-	-
SH31002	GBX080	GBX080	GBX120	GBX080	GBX120	GBX080	GBX120	GBX120	GBX160	GBX160	GBX160	-	-	-
SH31003	GBX080	GBX080	GBX120	GBX080	GBX120	GBX120	GBX120	GBX120	GBX160	GBX160	GBX160	-	-	-
SH31004	GBX120	GBX120	GBX120	GBX120	-	GBX120	GBX160	GBX160	GBX160	GBX160	GBX160	-	-	-
SH31401	GBX120	GBX120	GBX120	GBX120	-	GBX120	GBX160	GBX160	GBX160	GBX160	GBX160	-	-	-
SH31402	GBX120	GBX120	GBX160	-	-	GBX160	GBX160	GBX160	GBX160	GBX160	GBX160	-	-	-
SH31403	GBX120	GBX120	GBX160	-	-	GBX160	GBX160	GBX160	GBX160	GBX160	GBX160	-	-	-
SH31404	GBX120	GBX120	GBX160	-	-	GBX160	GBX160	GBX160	-	-	-	-	-	-
Lexium MH3 Servo motors	Reduction ratio													
	3:1, 4:1	5:1	8:1	9:1	10:1	12:1	15:1, 16:1	20:1	25:1	32:1	40:1	60:1	80:1	100:1
MH30701	GBX060	GBX060	GBX060	GBX060	GBX060	GBX060	GBX060	GBX080	GBX080	GBX080	GBX080	GBX120	GBX120	GBX120
MH30702	GBX060	GBX060	GBX080	GBX060	GBX080	GBX060	GBX080	GBX080	GBX080	GBX120	GBX120	GBX120	GBX120	GBX120
MH30703	GBX060	GBX060	GBX080	GBX060	GBX080	GBX080	GBX080	GBX080	GBX120	GBX120	GBX120	GBX120	GBX120	GBX120
MH31001	GBX080	GBX080	GBX080	GBX080	GBX080	GBX080	GBX080	GBX080	GBX120	GBX120	GBX120	-	-	-
MH31002	GBX080	GBX080	GBX120	GBX080	GBX080	GBX080	GBX120	GBX120	GBX160	GBX160	GBX160	-	-	-
MH31003	GBX080	GBX080	GBX120	GBX080	GBX120	GBX120	GBX120	GBX120	GBX160	GBX160	GBX160	-	-	-
MH31401	GBX120	GBX120	GBX120	GBX120	-	GBX120	GBX160	GBX160	GBX160	GBX160	GBX160	-	-	-
MH31402	GBX120	GBX120	GBX160	-	-	GBX160	GBX160	GBX160	GBX160	GBX160	GBX160	-	-	-
MH31403	GBX120	GBX120	GBX160	-	-	GBX160	GBX160	GBX160	GBX160	GBX160	GBX160	-	-	-
Lexium BMI Servo motors	Reduction ratio													
	3:1, 4:1	5:1	8:1	9:1	12:1	15:1, 16:1	20:1	25:1	32:1	40:1	60:1	80:1	100:1	
BMI0702	GBX080	GBX080	GBX080	GBX080	GBX080	GBX080	GBX080	GBX120	GBX120	GBX120	GBX120	GBX120	GBX120	GBX120
BMI0703	GBX080	GBX080	GBX080	GBX080	GBX080	GBX080	GBX080	GBX120	GBX120	GBX120	GBX120	GBX120	GBX120	GBX120
BMI1002	GBX120	GBX120	GBX120	GBX120	GBX120	GBX120	GBX120	GBX120	GBX120	GBX120	GBX160	-	-	-
BMI1003	GBX120	GBX120	GBX120	GBX120	GBX120	GBX120	GBX120	GBX120	GBX160	GBX160	GBX160	-	-	-

GBX040 GBX040 planetary gearbox is supplied with servo motor types BSH0401, BSH0402, SH30401, SH0402.

GBX... For these combinations, you must check that the application will not exceed the maximum gearbox output torque; refer to the values on our website [www.schneider-electric.com](http://www.schneider-electric.com).

Lexium servo motor / GBX planetary gearbox combinations										
Lexium BCH2 Servo motors	Reduction ratio									
	3:1	5:1	8:1	10:1	12:1	15:1	20:1	25:1	32:1	40:1
BCH2MBA53●C●5C	GBX040	GBX040	GBX040	-	-	-	-	-	-	-
BCH2MB013●C●5C	GBX040	GBX040	GBX040	-	-	-	-	-	-	-
BCH2LD023●C●5C	GBX060	GBX060	GBX060	GBX060	GBX060	GBX060	GBX060	GBX060	GBX060	-
BCH2LD043●C●5C	GBX060	GBX060	GBX060	-	GBX060	GBX060	-	GBX060	GBX060	-
BCH2LF043●C●5C	GBX080	GBX080	GBX080	GBX080	GBX080	GBX080	GBX080	GBX080	GBX080	GBX080
BCH2LF073●C●5C	GBX080	GBX080	GBX080	-	GBX080	GBX080	GBX080	GBX080	GBX080	-
BCH2LH103●C●6C	GBX120	GBX120	GBX120	GBX120	GBX120	GBX120	GBX120	GBX120	GBX120	GBX120
BCH2LH203●C●6C	GBX120	GBX120	GBX120	-	GBX120	GBX120	GBX120	GBX120	-	-
BCH2MM031●C●6C	GBX120	GBX120	GBX120	GBX120	GBX120	GBX120	GBX120	GBX120	GBX120	GBX120
BCH2MM052●C●6C	GBX120	GBX120	GBX120	GBX120	GBX120	GBX120	GBX120	GBX120	GBX120	GBX120
BCH2MM061●C●6C	GBX120	GBX120	GBX120	GBX120	GBX120	GBX120	GBX120	GBX120	GBX120	-
BCH2MM081●C●6C	GBX120	GBX120	GBX120	GBX120	GBX120	GBX120	GBX120	GBX120	GBX120	-
BCH2MM102●C●6C	GBX120	GBX120	GBX120	GBX120	GBX120	GBX120	GBX120	GBX120	GBX120	-
BCH2MM091●C●6C	GBX120	GBX120	GBX120	-	GBX120	GBX120	-	-	-	-
BCH2MM152●C●6C	GBX120	GBX120	GBX120	-	GBX120	GBX120	-	-	-	-
BCH2MM202●C●6C	GBX120	GBX120	GBX120	-	GBX120	GBX120	-	-	-	-

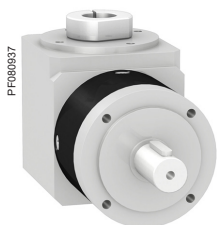
Lexium 62 ILM integrated drive / GBX planetary gearbox combinations														
Lexium 62 ILM integrated drives	Reduction ratio													
	3:1, 4:1	5:1	8:1	9:1	10:1	12:1	15:1, 16:1	20:1	25:1	32:1	40:1	60:1	80:1	100:1
ILM0701	GBX060	GBX060	GBX060	GBX060	GBX060	GBX060	GBX060	GBX080	GBX080	GBX080	GBX080	GBX120	GBX120	GBX120
ILM0702	GBX060	GBX060	GBX080	GBX060	GBX060	GBX060	GBX080	GBX080	GBX080	GBX120	GBX120	GBX120	GBX120	GBX120
ILM0703	GBX060	GBX060	GBX080	GBX060	GBX080	GBX080	GBX080	GBX080	GBX120	GBX120	GBX120	GBX120	GBX120	GBX120
ILM1001	GBX080	GBX080	GBX080	GBX080	GBX080	GBX080	GBX080	GBX080	GBX120	GBX120	GBX120	-	-	-
ILM1002	GBX080	GBX080	GBX120	GBX080	GBX080	GBX080	GBX120	GBX120	GBX160	GBX160	GBX160	-	-	-
ILM1003	GBX080	GBX080	GBX120	GBX080	GBX120	GBX120	GBX120	GBX120	GBX160	GBX160	GBX160	-	-	-
ILM1401	GBX120	GBX120	GBX120	GBX120	-	GBX120	GBX160	GBX160	GBX160	GBX160	GBX160	-	-	-
ILM1402	GBX120	GBX120	GBX160	-	-	GBX160	GBX160	GBX160	GBX160	GBX160	GBX160	-	-	-
ILM1403	GBX120	GBX120	GBX160	-	-	GBX160	GBX160	GBX160	GBX160	GBX160	GBX160	-	-	-

**GBX●●●** For these combinations, you must check that the application will not exceed the maximum gearbox output torque; refer to the values on our website [www.schneider-electric.com](http://www.schneider-electric.com).

# Planetary gearboxes

## GBY angular planetary gearboxes

For Lexium Servo motors and Lexium 62 ILM integrated drives



GBY angular planetary gearbox

References			
GBY angular planetary gearboxes			
Size	Reduction ratio	Reference	Weight kg/lb
GBY60	3:1, 4:1, 5:1 and 8:1	GBY060●●●K	1.700/3.748
	12:1, 20:1 and 40:1	GBY060●●●K	1.900/4.189
GBY80	3:1, 4:1, 5:1 and 8:1	GBY080●●●K	4.400/9.700
	12:1, 20:1, 25:1 and 40:1	GBY080●●●K	5.000/11.023
GBY120	3:1, 4:1, 5:1 and 8:1	GBY120●●●K	12.000/26.455
	12:1, 20:1 and 40:1	GBY120●●●K	14.000/30.865

To order a GBY●●●●●K angular planetary gearbox, complete each reference:

	GBY	●●●	●●●	K
Size (Casing diameter)	60 mm/ 2.36 in.	060		
	80 mm/ 3.15 in.	080		
	120 mm/ 4.72 in.	120		
Reduction ratio	3:1		003	
	4:1		004	
	5:1		005	
	8:1		008	
	12:1		012	
	20:1		020	
	25:1		025	
40:1		040		
Mounting with GBK adaptation kit				K

### Lexium servo motor / GBY gearbox combinations

Lexium BSH Servo motors	Reduction ratio							
	3:1	4:1	5:1	8:1	12:1	20:1	25:1	40:1
BSH0551	GBY060	GBY060	GBY060	GBY060	GBY060	GBY060	–	GBY060
BSH0552	GBY060	GBY060	GBY060	GBY060	GBY060	GBY060	–	–
BSH0553	GBY060	GBY060	GBY060	GBY060	GBY060	GBY060	–	–
BSH0701	GBY060	GBY060	GBY060	GBY060	GBY060	GBY080	GBY080	GBY080
BSH0702	GBY060	GBY060	GBY060	GBY080	GBY080	GBY080	GBY080	GBY120
BSH0703	GBY080	GBY080	GBY080	GBY080	GBY080	GBY080	GBY080	GBY120
BSH1001	GBY080	GBY080	GBY080	GBY080	GBY080	GBY080	–	GBY120
BSH1002	GBY080	GBY080	GBY080	GBY120	GBY080	GBY120	–	–
BSH1003	GBY120	GBY120	GBY120	GBY120	GBY120	GBY120	–	–
BSH1004	GBY120	GBY120	GBY120	–	GBY120	–	–	–
BSH1401	GBY120	GBY120	GBY120	GBY120	GBY120	–	–	–
Lexium BMH Servo motors	Reduction ratio							
	3:1	4:1	5:1	8:1	12:1	20:1	25:1	40:1
BMH0701	GBY060	GBY060	GBY060	GBY060	GBY060	GBY080	GBY080	GBY080
BMH0702	GBY060	GBY060	GBY060	GBY080	GBY080	GBY080	GBY080	GBY120
BMH0703	GBY080	GBY080	GBY080	GBY080	GBY080	GBY080	GBY080	GBY120
BMH1001	GBY080	GBY080	GBY080	GBY080	GBY080	GBY080	–	GBY120
BMH1002	GBY080	GBY080	GBY080	GBY120	GBY080	GBY120	–	–
BMH1003	GBY120	GBY120	GBY120	GBY120	GBY120	GBY120	–	–
BMH1401	GBY120	GBY120	GBY120	GBY120	GBY120	–	–	–
Lexium BMI Servo motors	Reduction ratio							
	3:1	4:1	5:1	8:1	12:1	20:1	40:1	
BMI0702	GBY080	GBY080	GBY080	GBY080	GBY080	GBY080	GBY120	
BMI0703	GBY080	GBY080	GBY080	GBY080	GBY080	GBY080	GBY120	
BMI1002	GBY120	GBY120	GBY120	GBY120	GBY120	GBY120	–	
BMI1003	GBY120	GBY120	GBY120	GBY120	GBY120	GBY120	–	

GBY●●●

For these combinations, please verify that the application will not exceed the maximum gearbox output torque; refer to the values on our website [www.schneider-electric.com](http://www.schneider-electric.com).



# Planetary gearboxes

## GBY angular planetary gearboxes

For Lexium Servo motors and Lexium 62 ILM integrated drives

Lexium servo motor / GBY gearbox combinations								
Lexium SH3 Servo motors	Reduction ratio							
	3:1	4:1	5:1	8:1	12:1	20:1	25:1	40:1
SH30551	GBY060	GBY060	GBY060	GBY060	GBY060	GBY060	-	GBY060
SH30552	GBY060	GBY060	GBY060	GBY060	GBY060	GBY060	-	-
SH30553	GBY060	GBY060	GBY060	GBY060	GBY060	GBY060	-	-
SH30701	GBY060	GBY060	GBY060	GBY060	GBY060	GBY080	GBY080	GBY080
SH30702	GBY060	GBY060	GBY060	GBY080	GBY080	GBY080	GBY080	GBY120
SH30703	GBY080	GBY080	GBY080	GBY080	GBY080	GBY080	GBY080	GBY120
SH31001	GBY080	GBY080	GBY080	GBY080	GBY080	GBY080	-	GBY120
SH31002	GBY080	GBY080	GBY080	GBY120	GBY080	GBY120	-	-
SH31003	GBY120	GBY120	GBY120	GBY120	GBY120	GBY120	-	-
SH31004	GBY120	GBY120	GBY120	-	GBY120	-	-	-
SH31401	GBY120	GBY120	GBY120	GBY120	GBY120	-	-	-
Lexium MH3 Servo motors	Reduction ratio							
	3:1	4:1	5:1	8:1	12:1	20:1	25:1	40:1
MH30701	GBY060	GBY060	GBY060	GBY060	GBY060	GBY080	GBY080	GBY080
MH30702	GBY060	GBY060	GBY060	GBY080	GBY080	GBY080	GBY080	GBY120
MH30703	GBY080	GBY080	GBY080	GBY080	GBY080	GBY080	GBY080	GBY120
MH31001	GBY080	GBY080	GBY080	GBY080	GBY080	GBY080	-	GBY120
MH31002	GBY080	GBY080	GBY080	GBY120	GBY080	GBY120	-	-
MH31003	GBY120	GBY120	GBY120	GBY120	GBY120	GBY120	-	-
MH31401	GBY120	GBY120	GBY120	GBY120	GBY120	-	-	-

**GBY●●●** For these combinations, please verify that the application will not exceed the maximum gearbox output torque; refer to the values on our website [www.schneider-electric.com](http://www.schneider-electric.com).

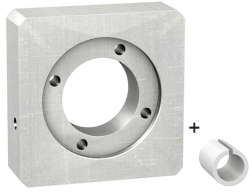
Lexium 62 ILM integrated drive / GBY gearbox combinations								
Lexium 62 ILM integrated drives	Reduction ratio							
	3:1	4:1	5:1	8:1	12:1	20:1	25:1	40:1
ILM0701	GBY060	GBY060	GBY060	GBY060	GBY060	GBY080	GBY080	GBY080
ILM0702	GBY060	GBY060	GBY060	GBY080	GBY080	GBY080	GBY080	GBY120
ILM0703	GBY080	GBY080	GBY080	GBY080	GBY080	GBY080	GBY080	GBY120
ILM1001	GBY080	GBY080	GBY080	GBY080	GBY080	GBY080	-	GBY120
ILM1002	GBY080	GBY080	GBY080	GBY120	GBY080	GBY120	-	-
ILM1003	GBY120	GBY120	GBY120	GBY120	GBY120	GBY120	-	-
ILM1401	GBY120	GBY120	GBY120	GBY120	GBY120	-	-	-

**GBY●●●** For these combinations, please verify that the application will not exceed the maximum gearbox output torque; refer to the values on our website [www.schneider-electric.com](http://www.schneider-electric.com).

# Planetary gearboxes

## GBK adaptation kits

For Lexium Servo motors and Lexium 62 ILM integrated drives



GBK.....F adaptation kit

### References

#### GBK adaptation kits

##### GBK.....F kits

To order a GBK.....F adaptation kit, complete each reference:

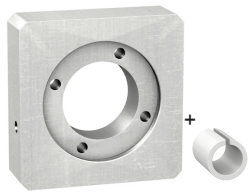
	GBK	●●●	●●●	●	F
Size of planetary gearbox (Casing diameter)	60 mm/ 2.36 in.	060			
	80 mm/ 3.15 in.	080			
	120 mm/ 4.72 in.	120			
Associated Lexium servo motors / Lexium integrated drives	BSH055, SH3055		055		
	BSH070, BMH070, SH3070, MH3070, BMI070 / ILM070		070		
	BSH100, BMH100, SH3100, MH3100, BMI100 / ILM100		100		
	BSH140, BMH140, SH3140, MH3140 / ILM140		140		
Compatibility	All types of motor			0	
	1 or 2-stack motors			2	
	1, 2, or 3-stack motors			3	
	4-stack motor			4	

#### Servo motor adaptation

##### GBK.....C kits

An adaptation kit GBK.....C is required for mounting a GBX.....K planetary gearbox on BCH2, BSH0401, BSH0402, SH30401 and SH30402 servo motors:

Gearbox size	For servo motor	Gearbox external diameter (mm / in.)	Motor flange size (mm / in.)	Number of motor stacks	Reference	Weight kg/lb
Size 40	BCH2MB..... BSH0401P.....A BSH0402P.....A, SH30401P....., SH30402P.....	40 / 1.58	40 / 1.58	1 and 2	<a href="#">GBK0400400C</a>	0.140 / 0.31
Size 60	BCH2LD.....	60 / 2.36	60 / 2.36	1 and 2	<a href="#">GBK0600600C</a>	0.240 / 0.53
Size 80	BCH2LF04.....	80 / 3.15	80 / 3.15	1	<a href="#">GBK0800801C</a>	0.460 / 1.01
	BCH2LF07.....	80 / 3.15	80 / 3.15	2 and 3	<a href="#">GBK0800803C</a>	0.440 / 0.97
Size 120	BCH2LH.....	120 / 4.72	100 / 3.94	1 and 2	<a href="#">GBK1201000C</a>	0.900 / 1.98
	BCH2MM03.....	120 / 4.72	130 / 5.12	1...4	<a href="#">GBK1201300C</a>	1.350 / 2.98
	BCH2MM05.....					
	BCH2MM06.....					
	BCH2MM09.....					
	BCH2MM10.....					
	BCH2MM15.....					
	BCH2MM20.....					
	BCH2MM08.....	120 / 4.72	130 / 5.12	1 (850 W)	<a href="#">GBK1201308C</a>	1.350 / 2.98



GBK.....C adaptation kit

### GBK adaptation kit / servo motors combination

Adaptation kit	Lexium BSH servo motors													
	0551●	0552●	0553●	0701●	0702●	0703●	1001●	1002●	1003●	1004●	1401●	1402●	1403●	1404●
<a href="#">GBK0600550F</a>				-	-	-	-	-	-	-	-	-	-	-
<a href="#">GBK0600702F</a>	-	-	-			-	-	-	-	-	-	-	-	-
<a href="#">GBK0600703F</a>	-	-	-	-	-		-	-	-	-	-	-	-	-
<a href="#">GBK0800702F</a>	-	-	-			-	-	-	-	-	-	-	-	-
<a href="#">GBK0800703F</a>	-	-	-	-	-		-	-	-	-	-	-	-	-
<a href="#">GBK0801003F</a>	-	-	-	-	-	-					-	-	-	-
<a href="#">GBK1200702F</a>	-	-	-			-	-	-	-	-	-	-	-	-
<a href="#">GBK1200703F</a>	-	-	-	-	-		-	-	-	-	-	-	-	-
<a href="#">GBK1201003F</a>	-	-	-	-	-	-					-	-	-	-
<a href="#">GBK1201004F</a>	-	-	-	-	-	-	-	-	-		-	-	-	-
<a href="#">GBK1201400F</a>	-	-	-	-	-	-	-	-	-	-				



- Compatible
- Not compatible

(1) Weight of adaptation kit:  
 ■ GBK060...F: 0.200 kg / 0.441 lb  
 ■ GBK080...F: 0.450 kg / 0.992 lb  
 ■ GBK120...F: 0.650 kg / 1.433 lb

GBK adaptation kit / servo motors combination														
Adaptation kit	Lexium BMH servo motors													
	0701●	0702●	0703●	1001●	1002●	1003●	1004●	1401●	1402●	1403●				
GBK0600702F			-	-	-	-	-	-	-	-				
GBK0600703F	-	-		-	-	-	-	-	-	-				
GBK0800702F			-	-	-	-	-	-	-	-				
GBK0800703F	-	-		-	-	-	-	-	-	-				
GBK0801003F	-	-	-					-	-	-				
GBK1200702F			-	-	-	-	-	-	-	-				
GBK1200703F	-	-		-	-	-	-	-	-	-				
GBK1201003F	-	-	-					-	-	-				
GBK1201400F	-	-	-	-	-	-	-							
Adaptation kit	Lexium SH3 servo motors													
	0551●	0552●	0553●	0701●	0702●	0703●	1001●	1002●	1003●	1004●	1401●	1402●	1403●	1404●
GBK0600550F				-	-	-	-	-	-	-	-	-	-	-
GBK0600702F	-	-	-				-	-	-	-	-	-	-	-
GBK0600703F	-	-	-	-			-	-	-	-	-	-	-	-
GBK0800702F	-	-	-				-	-	-	-	-	-	-	-
GBK0800703F	-	-	-	-			-	-	-	-	-	-	-	-
GBK0801003F	-	-	-	-	-					-	-	-	-	-
GBK1200702F	-	-	-				-	-	-	-	-	-	-	-
GBK1200703F	-	-	-	-			-	-	-	-	-	-	-	-
GBK1201003F	-	-	-	-	-					-	-	-	-	-
GBK1201004F	-	-	-	-	-	-	-	-	-					
GBK1201400F	-	-	-	-	-	-	-	-	-	-				
Adaptation kit	Lexium MH3 servo motors													
	0701●	0702●	0703●	1001●	1002●	1003●	1004●	1401●	1402●	1403●				
GBK0600702F			-	-	-	-	-	-	-	-				
GBK0600703F	-	-		-	-	-	-	-	-	-				
GBK0800702F			-	-	-	-	-	-	-	-				
GBK0800703F	-	-		-	-	-	-	-	-	-				
GBK0801003F	-	-	-					-	-	-				
GBK1200702F			-	-	-	-	-	-	-	-				
GBK1200703F	-	-		-	-	-	-	-	-	-				
GBK1201003F	-	-	-					-	-	-				
GBK1201400F	-	-	-	-	-	-	-							
Adaptation kit	Lexium BMI servo motors													
	0702●			0703●			1002●		1003●					
GBK0800702F														
GBK0800703F	-	-	-											
GBK1200702F														
GBK1200703F	-	-	-											
GBK1201003F	-	-	-											

GBK adaptation kit / Lexium62 ILM Integrated drives combination										
Adaptation kit	Lexium 62 ILM integrated drives									
	0701●	0702●	0703●	1001●	1002●	1003●	1004●	1401●	1402●	1403●
GBK0600702F			-	-	-	-	-	-	-	-
GBK0600703F	-	-		-	-	-	-	-	-	-
GBK0800702F			-	-	-	-	-	-	-	-
GBK0800703F	-	-		-	-	-	-	-	-	-
GBK0801003F	-	-	-					-	-	-
GBK1200702F			-	-	-	-	-	-	-	-
GBK1200703F	-	-		-	-	-	-	-	-	-
GBK1201003F	-	-	-					-	-	-
GBK1201400F	-	-	-	-	-	-	-			

 Compatible  
 Not compatible

(1) Weight of adaptation kit:  
 ■ GBK060●●●F: 0.200 kg / 0.441 lb  
 ■ GBK080●●●F: 0.450 kg / 0.992 lb  
 ■ GBK120●●●F: 0.650 kg / 1.433 lb







# GBX and GBY Planetary gearboxes

For Lexium servo motors and Lexium 62 ILM

integrated drives

Product reference index

GBX1200600702F	3	GBX1600050703F	3	GBX1600151082D	3	GBX1600251384D	3	GBY120003K	6
GBX1200600703F	3	GBX1600050704F	3	GBX1600151083D	3	GBX1600251385D	3	GBY120004K	6
GBX1200600704F	3	GBX1600051001F	3	GBX1600151084D	3	GBX1600251401F	3	GBY120005K	6
GBX1200600851G	3	GBX1600051002F	3	GBX1600151382D	3	GBX1600251402F	3	GBY120008K	6
GBX1200600852G	3	GBX1600051003F	3	GBX1600151383D	3	GBX1600251403F	3	GBY120012K	6
GBX1200600853G	3	GBX1600051004F	3	GBX1600151384D	3	GBX1600251404F	3	GBY120020K	6
GBX1200600854G	3	GBX1600051083D	3	GBX1600151385D	3	GBX1600320551F	3	GBY120040K	6
GBX1200601001F	3	GBX1600051084D	3	GBX1600151401F	3	GBX1600320552F	3		
GBX1200601002F	3	GBX1600051382D	3	GBX1600151402F	3	GBX1600320553F	3	<b>GBK</b>	
GBX1200601003F	3	GBX1600051383D	3	GBX1600151403F	3	GBX1600320554F	3	GBK0400400C	8
GBX1200601004F	3	GBX1600051384D	3	GBX1600151404F	3	GBX1600320701F	3	GBK0600550F	8
GBX1200601101G	3	GBX1600051385D	3	GBX1600160551F	3	GBX1600320702F	3	GBK0600570A	8
GBX1200601401F	3	GBX1600051401F	3	GBX1600160552F	3	GBX1600320703F	3	GBK0600572S	8
GBX1200601402F	3	GBX1600051402F	3	GBX1600160553F	3	GBX1600320704F	3	GBK0600573S	8
GBX1200601403F	3	GBX1600051403F	3	GBX1600160554F	3	GBX1600320842D	3	GBK0600600C	8
GBX1200601404F	3	GBX1600051404F	3	GBX1600160701F	3	GBX1600320843D	3	GBK0600660E	8
GBX120060K	3	GBX1600080551F	3	GBX1600160702F	3	GBX1600320844D	3	GBK0600702F	8
GBX12008000551F	3	GBX1600080552F	3	GBX1600160703F	3	GBX1600321001F	3	GBK0600703F	8
GBX1200800552F	3	GBX1600080553F	3	GBX1600160704F	3	GBX1600321002F	3	GBK0800702F	8
GBX1200800553F	3	GBX1600080554F	3	GBX1600161001F	3	GBX1600321003F	3	GBK0800703F	8
GBX1200800554F	3	GBX1600080701F	3	GBX1600161002F	3	GBX1600321004F	3	GBK0800801C	8
GBX1200800701F	3	GBX1600080702F	3	GBX1600161003F	3	GBX1600321081D	3	GBK0800803C	8
GBX1200800702F	3	GBX1600080703F	3	GBX1600161004F	3	GBX1600321082D	3	GBK0800852S	8
GBX1200800703F	3	GBX1600080704F	3	GBX1600161082D	3	GBX1600321083D	3	GBK0800853S	8
GBX1200800704F	3	GBX1600080844D	3	GBX1600161083D	3	GBX1600321084D	3	GBK0801000C	8
GBX1200800851G	3	GBX1600081001F	3	GBX1600161084D	3	GBX1600321382D	3	GBK0801003F	8
GBX1200800852G	3	GBX1600081002F	3	GBX1600161382D	3	GBX1600321383D	3	GBK0801300C	8
GBX1200801001F	3	GBX1600081003F	3	GBX1600161383D	3	GBX1600321384D	3	GBK1200702F	8
GBX1200801002F	3	GBX1600081004F	3	GBX1600161384D	3	GBX1600321385D	3	GBK1200703F	8
GBX1200801003F	3	GBX1600081082D	3	GBX1600161385D	3	GBX1600321401F	3	GBK1201000C	8
GBX1200801004F	3	GBX1600081083D	3	GBX1600161401F	3	GBX1600321402F	3	GBK1201003F	8
GBX1200801401F	3	GBX1600081084D	3	GBX1600161402F	3	GBX1600321403F	3	GBK1201004F	8
GBX1200801402F	3	GBX1600081382D	3	GBX1600161403F	3	GBX1600321404F	3	GBK1201100S	8
GBX1200801403F	3	GBX1600081383D	3	GBX1600161404F	3	GBX1600400551F	3	GBK1201300C	8
GBX1200801404F	3	GBX1600081384D	3	GBX1600200551F	3	GBX1600400552F	3	GBK1201308C	8
GBX120080K	3	GBX1600081385D	3	GBX1600200552F	3	GBX1600400553F	3	GBK1201400F	8
GBX1201000551F	3	GBX1600081401F	3	GBX1600200553F	3	GBX1600400554F	3		
GBX1201000552F	3	GBX1600081402F	3	GBX1600200554F	3	GBX1600400701F	3		
GBX1201000553F	3	GBX1600081403F	3	GBX1600200701F	3	GBX1600400702F	3		
GBX1201000554F	3	GBX1600081404F	3	GBX1600200702F	3	GBX1600400703F	3		
GBX1201000574G	3	GBX1600091083D	3	GBX1600200703F	3	GBX1600400704F	3		
GBX1201000701F	3	GBX1600091084D	3	GBX1600200704F	3	GBX1600400842D	3		
GBX1201000702F	3	GBX1600091382D	3	GBX1600200844D	3	GBX1600400843D	3		
GBX1201000703F	3	GBX1600091383D	3	GBX1600201001F	3	GBX1600400844D	3		
GBX1201000704F	3	GBX1600091384D	3	GBX1600201002F	3	GBX1600401001F	3		
GBX1201000851G	3	GBX1600091385D	3	GBX1600201003F	3	GBX1600401002F	3		
GBX1201000852G	3	GBX1600120551F	3	GBX1600201004F	3	GBX1600401003F	3		
GBX1201001001F	3	GBX1600120552F	3	GBX1600201082D	3	GBX1600401004F	3		
GBX1201001002F	3	GBX1600120553F	3	GBX1600201083D	3	GBX1600401081D	3		
GBX1201001003F	3	GBX1600120554F	3	GBX1600201084D	3	GBX1600401082D	3		
GBX1201001004F	3	GBX1600120701F	3	GBX1600201382D	3	GBX1600401083D	3		
GBX1201001401F	3	GBX1600120702F	3	GBX1600201383D	3	GBX1600401084D	3		
GBX1201001402F	3	GBX1600120703F	3	GBX1600201384D	3	GBX1600401101G	3		
GBX1201001403F	3	GBX1600120704F	3	GBX1600201385D	3	GBX1600401102G	3		
GBX1201001404F	3	GBX1600121001F	3	GBX1600201401F	3	GBX1600401103G	3		
GBX120100K	3	GBX1600121002F	3	GBX1600201402F	3	GBX1600401382D	3		
GBX1600031083D	3	GBX1600121003F	3	GBX1600201403F	3	GBX1600401383D	3		
GBX1600031084D	3	GBX1600121004F	3	GBX1600201404F	3	GBX1600401384D	3		
GBX1600031382D	3	GBX1600121083D	3	GBX1600250551F	3	GBX1600401385D	3		
GBX1600031383D	3	GBX1600121084D	3	GBX1600250552F	3	GBX1600401401F	3		
GBX1600031384D	3	GBX1600121382D	3	GBX1600250553F	3	GBX1600401402F	3		
GBX1600031385D	3	GBX1600121383D	3	GBX1600250554F	3	GBX1600401403F	3		
GBX1600031402F	3	GBX1600121384D	3	GBX1600250701F	3	GBX1600401404F	3		
GBX1600031403F	3	GBX1600121385D	3	GBX1600250702F	3				
GBX1600031404F	3	GBX1600121401F	3	GBX1600250703F	3	<b>GBY</b>			
GBX1600041083D	3	GBX1600121402F	3	GBX1600250704F	3	GBY060003K	6		
GBX1600041084D	3	GBX1600121403F	3	GBX1600250843D	3	GBY060004K	6		
GBX1600041382D	3	GBX1600121404F	3	GBX1600250844D	3	GBY060005K	6		
GBX1600041383D	3	GBX1600150551F	3	GBX1600251001F	3	GBY060008K	6		
GBX1600041384D	3	GBX1600150552F	3	GBX1600251002F	3	GBY060012K	6		
GBX1600041385D	3	GBX1600150553F	3	GBX1600251003F	3	GBY060020K	6		
GBX1600041402F	3	GBX1600150554F	3	GBX1600251004F	3	GBY060040K	6		
GBX1600041403F	3	GBX1600150701F	3	GBX1600251081D	3	GBY080003K	6		
GBX1600041404F	3	GBX1600150702F	3	GBX1600251082D	3	GBY080004K	6		
GBX1600050551F	3	GBX1600150703F	3	GBX1600251083D	3	GBY080005K	6		
GBX1600050552F	3	GBX1600150704F	3	GBX1600251084D	3	GBY080008K	6		
GBX1600050553F	3	GBX1600151001F	3	GBX1600251103G	3	GBY080012K	6		
GBX1600050554F	3	GBX1600151002F	3	GBX1600251104S	3	GBY080020K	6		
GBX1600050701F	3	GBX1600151003F	3	GBX1600251382D	3	GBY080025K	6		
GBX1600050702F	3	GBX1600151004F	3	GBX1600251383D	3	GBY080040K	6		



[www.schneider-electric.com/Machine control solutions](http://www.schneider-electric.com/Machine control solutions)

#### Schneider Electric Industries SAS

Head Office  
35, rue Joseph Monier  
F-92500 Rueil-Malmaison  
France

The information provided in this documentation contains general descriptions and/or technical characteristics of the performance of the products contained herein. This documentation is not intended as a substitute for and is not to be used for determining suitability or reliability of these products for specific user applications. It is the duty of any such user or integrator to perform the appropriate and complete risk analysis, evaluation and testing of the products with respect to the relevant specific application or use thereof. Neither Schneider Electric nor any of its affiliates or subsidiaries shall be responsible or liable for misuse of the information contained herein.

Design: Schneider Electric  
Photos: Schneider Electric