



MASTER LEDtube EM/ Mains T8



MAS LEDtube 1500mm HO 18.2W 840 T8

The Philips MASTER LEDtube integrates a LED light source into a traditional fluorescent form factor. Its unique design creates a perfectly uniform visual appearance, which cannot be distinguished from traditional fluorescent. These T8 LED tubes are the right choice for absolute performance and are designed to stand up to everyday conditions. Unparalleled savings thanks to low energy consumption and an exceptionally long lifetime ensure this tube masters every demanding application.

Warnings and Safety

- NOTE: The overall energy efficiency and light distribution of any installation that uses these lamps will be determined by the design of the installation.

Product data

| General Information | |
|------------------------------------|--------------------|
| Cap-Base | G13 ROT |
| Nominal lifetime | 75,000 hour(s) |
| Switching Cycle | 200,000 |
| Lighting Technology | LED |
| Flux measurement reference | Sphere |
| Light Technical | |
| Color Code | 840 [CCT of 4000K] |
| Beam Angle (Nom) | 160 degree(s) |
| Luminous Flux | 3,100 lm |
| Color Designation | Cool White (CW) |
| Correlated Color Temperature (Nom) | 4000 K |
| Luminous Efficacy (rated) (Nom) | 170 lm/W |

| Color Consistency | <6 |
|--|-------------|
| Color rendering index (CRI) | 80 |
| LLMF At End Of Nominal Lifetime (Nom) | 70 % |
| Photobiological safety according to EN 62471 | RG0 |
| Operating and Electrical | |
| Line Frequency | 50 to 60 Hz |
| Input Frequency | 50 to 60 Hz |
| Power Consumption | 18.2 W |
| Lamp Current (Max) | 93 mA |
| Lamp Current (Min) | 77 mA |
| Starting Time (Nom) | 0.5 s |
| Warm-up time to 60% light | 0.5 s |
| Power Factor (Fraction) | 0.9 |

MASTER LEDtube EM/Mains T8

| | |
|--|-----------|
| Voltage (Nom) | 220-240 V |
| Ballast Compatibility | EM/Mains |
| LED alternative to fluorescent lamp power | 58 W |
| Inrush current at mains | 8.4 |
| Max. lamp no. on MCB B type 10A – Mains | 80 |
| Max. lamp no. on MCB B type 10A – EM ballast without Compensation Capacitor. | 80 |
| Max. lamp no. on MCB B type 10A – EM ballast with Compensation Capacitor. | 10 |
| Max. lamp no. on MCB B type 16A – Mains | 130 |
| Max. lamp no. on MCB B type 16A – EM ballast without Compensation Capacitor. | 135 |
| Max. lamp no. on MCB B type 16A – EM ballast with Compensation Capacitor. | 16 |

Temperature

| | |
|----------------------|-------|
| T-Case Maximum (Nom) | 55 °C |
|----------------------|-------|

Controls and Dimming

| | |
|----------|----|
| Dimmable | No |
|----------|----|

Mechanical and Housing

| | |
|--------------------|----------|
| Bulb Finish | Frosted |
| Bulb Material | Plastic |
| Product Length | 1,500 mm |
| Bulb Shape | T8 |
| Net Weight (Piece) | 0.285 kg |

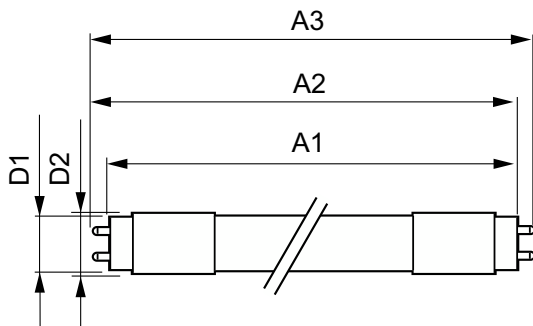
Approval and Application

| | |
|---|--|
| Energy Efficiency Class | C |
| Energy Saving Product | Yes |
| Approval Marks | RoHS compliance CE marking KEMA Keur certificate ENEC certificate |
| Energy Consumption kWh/1000 h | 19 kWh |
| EPREL Registration Number | 1206970 |
| CE mark | Yes |
| EU RoHS compliant | Yes |
| Flickering value (PstLM) - Flickering value as per EN 61000-3-3 | 0.5 |
| Stroboscopic effect visibility measure (SVM) | 0.2 |
| Ambient temperature range | -20 °C to 45 °C |

Product Data

| | |
|---------------------------------|---------------------------------------|
| Order product name | MAS LEDtube 1500mm HO 18.2W 840 T8 |
| Full product name | MAS LEDtube 1500mm HO 18.2W 840 T8 |
| Full product code | 871869959243100 |
| Order code | 929001923002 |
| Material Nr. (12NC) | 929001923002 |
| Numerator - Quantity Per Pack | 1 |
| EAN/UPC - Product/Case | 8718699592431 |
| Numerator - Packs per outer box | 10 |
| EAN/UPC - Case | 8718699592448 |

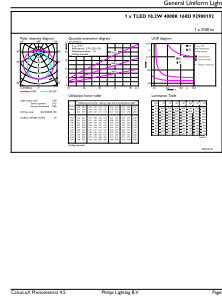
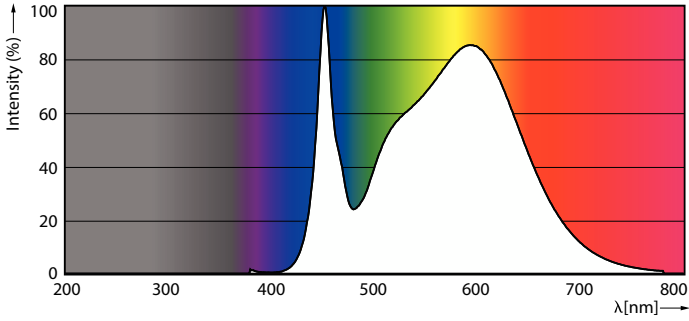
Dimensional drawing



| Product | D1 | D2 | A1 | A2 | A3 |
|---------------------------------------|---------|-------|------------|------------|----------|
| MAS LEDtube 1500mm HO 18.2W 840 T8 | 25.8 mm | 28 mm | 1,498.8 mm | 1,505.9 mm | 1,513 mm |

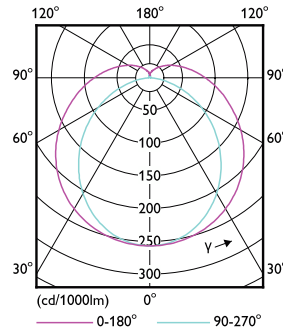
MASTER LEDtube EM/Mains T8

Photometric data



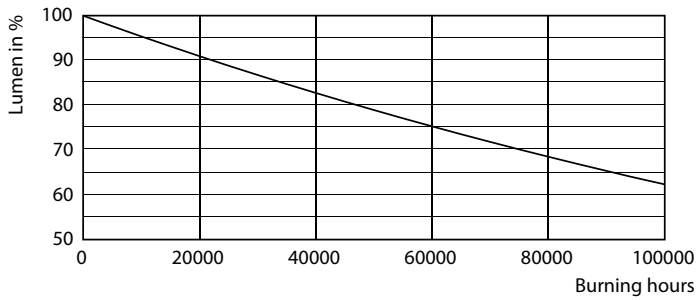
Spectral Power Distribution Colour - MAS LEDtube 1500mm HO 18.2W 840 T8

General uniform lighting - MAS LEDtube 1500mm HO 18.2W 840 T8

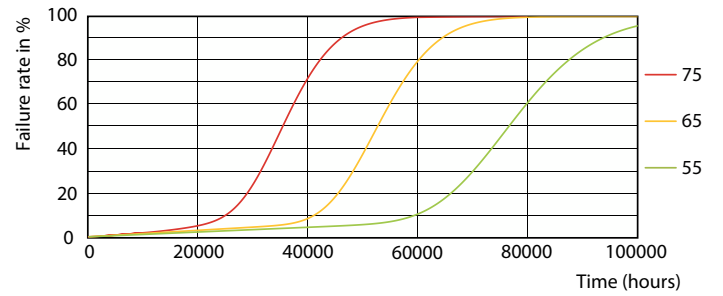


Light Distribution Diagram - MAS LEDtube 1500mm HO 18.2W 840 T8

Lifetime



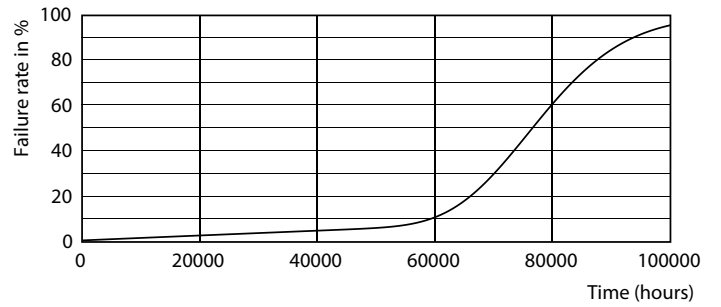
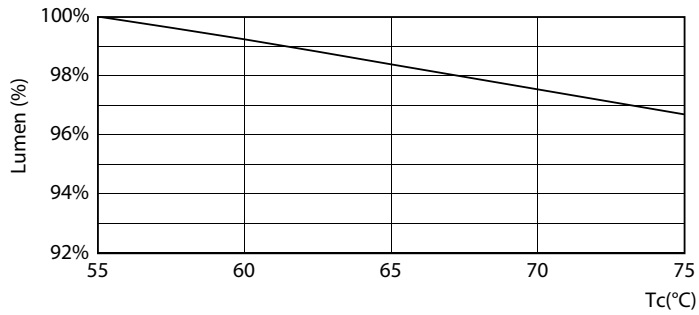
Lumen Maintenance Diagram - MAS LEDtube 1500mm HO 18.2W 840 T8



LEDtube-75K-5575-FailureRate-LED

MASTER LEDtube EM/Mains T8

Lifetime



Lumen Maintenance Diagram - MAS LEDtube 1500mm HO 18.2W 840 T8

Life Expectancy Diagram



LifetimeVsTc

